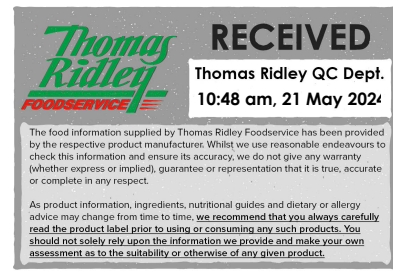


Changed May 20, 2024 15:20
Reviewed May 20, 2024 15:20
Erudus ID 698ff2aebe494618b2673bbd8a86c59e
Version 4.0



02981

No1 Beef Gravy Mix 1.5kg

Beef Gravy Mix 2x1.5kg

PRODUCT DESCRIPTION

A composite material produced by the dry blending of food ingredients. A fine, light greyish-brown coloured, free-flowing powder with a distinctive odour of beef. It has the characteristic appearance and flavour of beef gravy when reconstituted with water.

Brand	Essential Cuisine Limited
Manufacturer Product Code	SW00663 - ECBGM/11
Manufacturer Version Number	1
Effective Date	Dec 7, 2022
Product Type	Food
Product Category	Gravy / Bouillon
Storage Type	Ambient
Erudus ID	698ff2aebe494618b2673bbd8a86c59e
Specification Type	Generic



Inner Component GTIN	5029540000573
Outer Case GTIN	05029540000726



GLUTEN FREE

INGREDIENTS

Ingredient Declaration

Ingredients when reconstituted:

Beef Stock (Water, Beef Stock, Beef Dripping), Modified Tapioca Starch, Flavourings, Salt, Glucose Syrup, Sugar, Rice Flour, Colour (Caramel), Potato Starch, Cornflour, Rapeseed Oil, Maltodextrin, Yeast Extracts, Herb.

ALLERGENS

Product Contains:

Celery/Celery	No
Cereals Containing Gluten	No
Barley	No
Oats	No
Rye	No
Wheat (including Spelt and Khorasan)	No
Crustacea	No
Eggs	No
Fish	No
Lupin	No
Milk	No
Molluscs	No
Mustard	No
Nuts (Tree)	No
Almond nuts	No
Brazil nuts	No
Cashew nuts	No
Hazelnuts	No
Macadamia (Queensland) nuts	No
Pecan nuts	No
Pistachio nuts	No
Walnuts	No
Peanuts	No
Sesame Seeds	No
Soybeans	No
Sulphur Dioxide and Sulphites	No

Additional Allergen Information

N/A

FREE FROM CLAIMS

Gluten-Free	Yes
--------------------	-----

SUPPLEMENTARY INGREDIENT INFORMATION

Palm Oil	No
Hydrogenated Vegetable Oil/Fat	No
GM Protein/DNA	No

ADDITIVES

Product Contains:

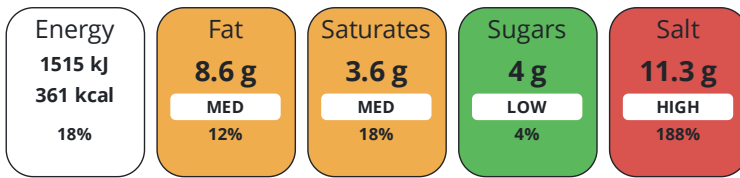
Artificial Antioxidants	No
Artificial Colours	Yes
Artificial Flavour Enhancers	No
Artificial Flavourings	Yes
Artificial Preservatives	No
Artificial Sweeteners	No

DIET SUITABILITY

Vegan Diet	No	Vegetarian Diet	No
Halal Diet	No	Kosher Diet	No

NUTRITIONAL INFORMATION

Each 100g/ml portion contains:



of your reference intake.

Typical values per 100g/ml : Energy 361kcal / 1515kJ

Nutrient	per 100g	RI per 100g
Energy (kJ)	1515 kJ	18%
Energy (kcal)	361 kcal	18%
Fat	8.6 g	12%
of which Saturates	3.6 g	18%
Carbohydrate	65.3 g	25%
of which Sugars	4 g	4%
Fibre	0.3 g	
Protein	5.6 g	11%
Salt	11.3 g	188%
Sodium	4500 mg	

SUPPLEMENTARY NUTRITIONAL INFORMATION

HANDLING & STORAGE INFORMATION

Directions For Use

To make beef gravy, simply whisk 75g of gravy mix into 1litre of lukewarm (not hot) water in a suitable saucepan. Bring to boil, stirring constantly. Allow to simmer for 4-5 minutes. Your beef gravy is now ready to use.

Storage Instructions

Always reseal after use and keep in a cool place.

Shelf Life from Time of Production

547 Days

Exempt From Shelf Life Labelling

No

ACCREDITATIONS/ CERTIFICATIONS/ ASSURANCE SCHEMES

BRCGS Certified

Food for Life Supplier Scheme

School Approved (The Requirement for School Food Regulation 2014)

Other Accreditation

ORIGIN

Product Country of Origin/Place of

United Kingdom

Provenance

Additional Origin Details

Manufactured in the UK using materials from EU and non EU countries

PRODUCT CHARACTERISTICS

Standards Testing

CONFIGURATION

Case Configuration

Total Quantity of Inner Components in Outer Case

2 Units

Is the Outer Case Splittable?

Yes

Inner Pack Configuration

PRODUCT WEIGHTS

Inner Component

Variable Weight Consumer Item	No
Inner Component Weight	1.5 kg
Outer Case	
Outer Case Gross Weight	3.27 kg
Outer Case Net Weight	3 kg

PRODUCT DIMENSIONS

Inner Component

Inner Component Depth	175 mm
Inner Component Width	175 mm
Inner Component Height	157 mm

Outer Case

Outer Case Depth	350 mm
Outer Case Width	175 mm
Outer Case Height	157 mm

PALLET INFORMATION

Quantity of Cases Per Pallet Layer	20 Cases
Quantity of Layers Per Pallet	7 Layers
Quantity of Cases Per Pallet	140 Cases
Pallet Height	1.5 MTR
Pallet Gross Weight	478 kg

PACKAGING

Inner Component Packaging

Type	Materials	Weight	Recycled Plastic %	Recyclable	Returnable	Composite
Tub	Plastic	230 g	- %			
Tub	Paper/Cardboard	2 g	- %			

Outer Case Packaging

Type	Materials	Weight	Recycled Plastic %	Recyclable	Returnable	Composite
Case	Plastic	20 g	- %			
Case	Paper/Cardboard	23.23 g	- %			

Transport Packaging

Type	Materials	Weight	Recycled Plastic %	Recyclable	Returnable	Composite
Other	Plastic	500 g	- %			
Other	Paper/Cardboard	500 g	- %			
Other	Wood	30000 g	- %			

MARKETING INFORMATION

Marketing Description

Made with real beef stock and beef dripping for that great gravy taste. Use this product on its own, or feel free to add your own meat juices. Either way it is the perfect accompaniment to your roast beef, grills, sausages and pies. It also meets 2024 salt targets.

OTHER INFORMATION

Intrastat/Taric Code	2103
-----------------------------	------

Manufacturer Comments

N/A

CONTACT INFORMATION

Address

Essential Cuisine Limited

Essential Cuisine Ltd

Browning Way

Winsford

Cheshire

CW7 2RH

United Kingdom

P: (Phone) 01606 541490

The information on the [Erudus System](#) has been supplied by the manufacturers of the products and, whilst the owners of the Erudus System take steps to ensure the information is regularly updated, they give no warranty and no guarantee that the information is accurate. Product information and ingredients may change, please always read product labels carefully in addition to using the information provided by Erudus.

We do not accept liability for any inaccuracies or incorrect information contained on this site.
Please visit <http://www.erudus.com/terms-and-conditions> for full terms and conditions.