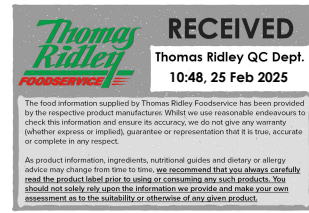


Changed Feb 10, 2025 16:11

Reviewed Feb 10, 2025 16:11

Erudus ID e1855c4aab2a49799652388dcbfc2009

Version 4.0



03051

Twinnings English Breakfast String & Tag Tea Bags 1x6x100

English Breakfast String & Tag Tea Bags 6x

PRODUCT DESCRIPTION

Golden & well rounded English Breakfast

| | |
|----------------------------------|----------------------------------|
| Brand | R. Twinings & Co Ltd |
| Manufacturer Product Code | 100014984 |
| Product Type | Drink |
| Product Category | Tea & Coffee |
| Storage Type | Ambient |
| Erudus ID | e1855c4aab2a49799652388dcbfc2009 |
| Specification Type | Drinks |
| Inner Component GTIN | 0070177176877 |
| Outer Case GTIN | 00070177536473 |



INGREDIENTS

Ingredient Declaration

100% Decaffeinated Black Tea

ALLERGENS

Product Contains:

| | | | |
|---|----|--------------------------------------|----|
| Celery/Celериac | No | Mustard | No |
| Cereals Containing Gluten | No | Nuts (Tree) | No |
| Barley | No | Almond nuts | No |
| Oats | No | Brazil nuts | No |
| Rye | No | Cashew nuts | No |
| Wheat (including Spelt and Khorasan) | No | Hazelnuts | No |
| Crustacea | No | Macadamia (Queensland) nuts | No |
| Eggs | No | Pecan nuts | No |
| Fish | No | Pistachio nuts | No |
| Lupin | No | Walnuts | No |
| Milk | No | Peanuts | No |
| Molluscs | No | Sesame Seeds | No |
| | | Soybeans | No |
| | | Sulphur Dioxide and Sulphites | No |

SUPPLEMENTARY INGREDIENT INFORMATION

| | |
|---------------------------------------|----|
| Palm Oil | No |
| Hydrogenated Vegetable Oil/Fat | No |
| GM Protein/DNA | No |

ADDITIVES

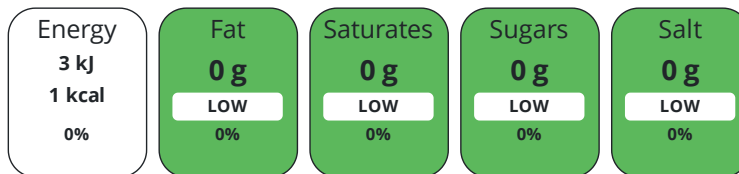
Product Contains:

| | | | |
|-------------------------------------|--------------|---------------------------------|--------------|
| Artificial Antioxidants | No | Artificial Flavourings | No |
| Artificial Colours | No | Artificial Preservatives | No |
| Artificial Flavour Enhancers | No | Artificial Sweeteners | No |
| Vegan Diet | Suitable for | Vegetarian Diet | Suitable for |
| Halal Diet | No | Kosher Diet | No |

DIET
SUITABILITY

NUTRITIONAL
INFORMATION

Each 100g/ml portion contains:



of your reference intake.

Typical values per 100g/ml : Energy 1kcal / 3kj

| Nutrient | per 100ml | RI per 100ml | per 200ml serving | RI per 200ml serving |
|----------------------------------|-----------|--------------|-------------------|----------------------|
| Energy (kJ) | 3 kJ | 0% | 6 kJ | 0% |
| Energy (kcal) | 1 kcal | 0% | 2 kcal | 0% |
| Fat | 0 g | 0% | - | - |
| of which Saturates | 0 g | 0% | - | - |
| of which Mono-unsaturates | 0 g | - | - | - |
| of which Polyunsaturates | 0 g | - | - | - |
| Carbohydrate | 0 g | 0% | - | - |
| of which Sugars | 0 g | 0% | - | - |
| of which Polyols | 0 g | - | - | - |
| of which Starch | 0 g | - | - | - |
| Fibre | 0 g | - | - | - |
| Protein | 0 g | 0% | - | - |
| Salt | 0 g | 0% | - | - |
| Sodium | 0 mg | - | - | - |
| Serving Size | 200 ml | | | |

VITAMINS AND
MINERALS

| Nutrient | per 100ml | RI per 100ml | per 200ml serving | RI per 200ml serving |
|--------------------------|-----------|--------------|-------------------|----------------------|
| Vitamin A | 0 µg | 0% | - | - |
| Vitamin C | 0 mg | 0% | - | - |
| Folate/Folic Acid | 0 µg | 0% | - | - |
| Calcium | 0 mg | 0% | - | - |
| Iron | 0 mg | 0% | - | - |
| Zinc | 0 mg | 0% | - | - |

SUPPLEMENTARY
NUTRITIONAL
INFORMATION

| | |
|--|-----|
| Cholesterol per 100 g/ml (UK/FR) | 0 g |
| Trans Fats per 100 g/ml | 0 g |
| Fat Percentage in Dry Matter per 100 g/ml | 0 % |
| Non Milk Extrinsic Sugars per 100 g/ml | 0 g |

HANDLING &
STORAGE
INFORMATION

Directions For Use

Brew for two to three minutes. Four for a cup that packs a little punch. Drink with a splash of milk.

Storage Instructions

Ambient

Storage Instructions After Opening

Store in a cool, dry place.

| | |
|---|----------|
| Shelf Life from Time of Production | 547 Days |
|---|----------|

BRCGS Certified

ACCREDITATIONS/
CERTIFICATIONS/
ASSURANCE
SCHEMES
ORIGIN

| | |
|--|-------|
| Product Country of Origin/Place of Provenance | Other |
|--|-------|

Additional Origin Details

Mixed country of origin

PRODUCT
CHARACTERISTICS

Standards Testing

| | |
|--|----|
| Do you undertake trend analysis of microbiological results? | No |
|--|----|

| | |
|--|----|
| Is shelf life testing undertaken? | No |
|--|----|

CONFIGURATION

Case Configuration

Inner Pack Configuration

| | |
|---|---------|
| Total Quantity of Inner Components in Outer Case | 6 Units |
|---|---------|

| | |
|--------------------------------------|-----|
| Is the Outer Case Splittable? | Yes |
|--------------------------------------|-----|

PRODUCT
WEIGHTS

Inner Component

| | |
|---------------------------|-------|
| Net Drained Weight | 2.5 g |
|---------------------------|-------|

Outer Case

| | |
|--------------------------------|---------|
| Outer Case Gross Weight | 2.14 kg |
|--------------------------------|---------|

| | |
|------------------------------|--------|
| Outer Case Net Weight | 1.5 kg |
|------------------------------|--------|

PRODUCT
DIMENSIONS

Inner Component

| | |
|------------------------------|-------|
| Inner Component Depth | 60 mm |
|------------------------------|-------|

| | |
|------------------------------|--------|
| Inner Component Width | 165 mm |
|------------------------------|--------|

| | |
|-------------------------------|--------|
| Inner Component Height | 143 mm |
|-------------------------------|--------|

Outer Case

| | |
|-------------------------|--------|
| Outer Case Depth | 370 mm |
|-------------------------|--------|

| | |
|-------------------------|--------|
| Outer Case Width | 142 mm |
|-------------------------|--------|

| | |
|--------------------------|--------|
| Outer Case Height | 165 mm |
|--------------------------|--------|

PALLET
INFORMATION

| | |
|---|----------|
| Quantity of Cases Per Pallet Layer | 20 Cases |
|---|----------|

| | |
|--------------------------------------|----------|
| Quantity of Layers Per Pallet | 7 Layers |
|--------------------------------------|----------|

| | |
|-------------------------------------|-----------|
| Quantity of Cases Per Pallet | 140 Cases |
|-------------------------------------|-----------|

| | |
|--------------------|--------------------|
| Pallet Type | UK Standard Pallet |
|--------------------|--------------------|

| | |
|----------------------|---------|
| Pallet Height | 1.4 MTR |
|----------------------|---------|

| | |
|----------------------------|--------|
| Pallet Gross Weight | 323 kg |
|----------------------------|--------|

PACKAGING

Inner Component Packaging

| Type | Materials | Weight | Recycled Plastic % | Recyclable | Returnable | Composite |
|------|-----------------|--------|--------------------|------------|------------|-----------|
| Box | Paper/Cardboard | 75 g | - % | | | |
| Box | Steel | 5 g | - % | | | |

Outer Case Packaging

| Type | Materials | Weight | Recycled Plastic % | Recyclable | Returnable | Composite |
|------|-----------|--------|--------------------|------------|------------|-----------|
| Case | Plastic | 12 g | - % | | | |

Transport Packaging

| Type | Materials | Weight | Recycled Plastic % | Recyclable | Returnable | Composite |
|-------|-----------|--------|--------------------|------------|------------|-----------|
| Other | Plastic | 350 g | - % | | Yes | |

OTHER INFORMATION

Intrastat/Taric Code 9023000

CONTACT INFORMATION

Address

R. Twinings & Co Ltd
 Andover
 SP10 5AQ
 England

P: (Phone) 01264 348181

Technical Contact

Neil Parry
 Customer Supply Team
 Neil.parry@twinings.com

P: (Phone) 01264 348181

The information on the [Erudus System](#) has been supplied by the manufacturers of the products and, whilst the owners of the Erudus System take steps to ensure the information is regularly updated, they give no warranty and no guarantee that the information is accurate. Product information and ingredients may change, please always read product labels carefully in addition to using the information provided by Erudus.

We do not accept liability for any inaccuracies or incorrect information contained on this site. Please visit <http://www.erudus.com/terms-and-conditions> for full terms and conditions.