

Changed May 07, 2024 13:58

Reviewed May 07, 2024 13:58

Erudus ID 9ed6693b46db4213ad2c0bf710831dd7

Version 2.0

Thomas Ridley
FOODSERVICE

RECEIVED
Thomas Ridley QC Dept.
3:39 pm, 7 May 2024

The food information supplied by Thomas Ridley Foodservice has been provided by the respective product manufacturer. Whilst we use reasonable endeavours to check this information and ensure its accuracy, we do not give any warranty (whether express or implied), guarantee or representation that it is true, accurate or complete in any respect.

As product information, ingredients, nutritional guides and dietary or allergy advice may change from time to time, we recommend that you always carefully read the product label prior to using or consuming any such products. You should not solely rely upon the information we provide and make your own assessment as to the suitability or otherwise of any given product.



03080

Feast Chocolate (35x90ml)

Feast Chocolate 90ml 35x90ml

PRODUCT DESCRIPTION

Chocolate flavour ice cream with a solid chocolate flavour centre (13%) and crisp chocolate flavour coating (19%) with biscuit pieces (1,5%).

Brand	Unilever UK Limited
Manufacturer Product Code	18648606
Product Type	Food
Product Category	Other
Storage Type	Frozen
Erudus ID	9ed6693b46db4213ad2c0bf710831dd7
Specification Type	Generic



Inner Component GTIN	8712100888274
Outer Case GTIN	8000920864869



INGREDIENTS

Ingredient Declaration

Ingredients: Reconstituted skimmed MILK, coconut oil, sugar, glucose syrup, glucose-fructose syrup, skimmed MILK powder, WHEAT flour, fat-reduced cocoa powder, emulsifiers (SOYBEAN lecithin, mono- and diglycerides of fatty acids), whey solids (MILK), stabilisers (guar gum, locust bean gum), flavouring, salt, raising agent (ammonium hydrogen carbonate).

ALLERGENS

Product Contains:

Celery/Celeriac	No
Cereals Containing Gluten	Yes
Barley	No
Oats	No
Rye	No
Wheat (including Spelt and Khorasan)	Yes
Crustacea	No
Eggs	May Contain
Fish	No
Lupin	No
Milk	Yes
Molluscs	No
Mustard	No
Nuts (Tree)	May Contain
Almond nuts	May Contain
Brazil nuts	No
Cashew nuts	No
Hazelnuts	May Contain
Macadamia (Queensland) nuts	No
Pecan nuts	No
Pistachio nuts	No
Walnuts	No
Peanuts	No
Sesame Seeds	No
Soybeans	Yes
Sulphur Dioxide and Sulphites	No

Risk Source:

Additional Allergen Information

May contain: hazelnut, almond, egg.

SUPPLEMENTARY INGREDIENT INFORMATION

Palm Oil	No
Hydrogenated Vegetable Oil/Fat	No
GM Protein/DNA	No

ADDITIVES

Product Contains:

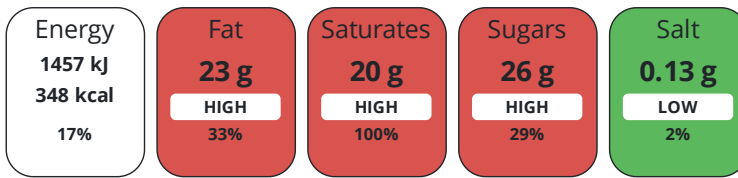
Artificial Antioxidants	No
Artificial Colours	No
Artificial Flavour Enhancers	No
Artificial Preservatives	No
Artificial Sweeteners	No

DIET SUITABILITY

Vegan Diet	No	Vegetarian Diet	No
Halal Diet	No	Kosher Diet	No

NUTRITIONAL INFORMATION

Each 100g/ml portion contains:



of your reference intake.

Typical values per 100g/ml : Energy 348kcal / 1457kJ

Nutrient	per 100g	RI per 100g	per 90g serving	RI per 90g serving
Energy (kJ)	1457 kJ	17%	1311.3 kJ	16%
Energy (kcal)	348 kcal	17%	313.2 kcal	16%
Fat	23 g	33%	20.7 g	30%
of which Saturates	20 g	100%	18 g	90%
Carbohydrate	32 g	12%	28.8 g	11%
of which Sugars	26 g	29%	23.4 g	26%
Protein	3.1 g	6%	2.8 g	6%
Salt	0.13 g	2%	0.1 g	2%
Serving Size			90 g	

SUPPLEMENTARY NUTRITIONAL INFORMATION

HANDLING & STORAGE INFORMATION

Directions For Use

-

Storage Instructions

Store at -18°C

Shelf Life from Time of Production

720 Days

Exempt From Shelf Life Labelling

No

ACCREDITATIONS/ CERTIFICATIONS/ ASSURANCE SCHEMES

FSSC 22000

ORIGIN

Product Country of Origin/Place of

Great Britain

Provenance

PRODUCT CHARACTERISTICS

Standards Testing

Do you undertake trend analysis of microbiological results?

No

Is shelf life testing undertaken?

Yes

CONFIGURATION

Case Configuration

Total Quantity of Inner Components in Outer Case

35 Units

Inner Pack Configuration

PRODUCT WEIGHTS

Inner Component

Variable Weight Consumer Item	No
Inner Component Volume	90 ml
Outer Case	
Outer Case Gross Weight	3.2 kg
Outer Case Net Weight	2.94 kg

PRODUCT DIMENSIONS

Inner Component

Inner Component Depth	60 mm
Inner Component Width	190 mm
Inner Component Height	30 mm

Outer Case

Outer Case Depth	297 mm
Outer Case Width	166 mm
Outer Case Height	185 mm

PALLET INFORMATION

Quantity of Cases Per Pallet Layer	23 Cases
Quantity of Layers Per Pallet	8 Layers
Quantity of Cases Per Pallet	184 Cases
Pallet Height	1.64 MTR
Pallet Gross Weight	616.75 kg

PACKAGING

Inner Component Packaging

Type	Materials	Weight	Recycled Plastic %	Recyclable	Returnable	Composite
Film	Plastic	0.79 g	- %			
Film	Other	1.2 g	- %			

OTHER INFORMATION

CONTACT INFORMATION

Address

Unilever UK Limited
Lever House
3 St James Road
Kingston Upon Thames
KT1 2BA
England

P: (Phone) 020 8547 8989

Technical Contact

Theresa Crayston
R&D Assistant Deploy Manager UFS
Theresa.Crayston@unilever.com

P: (Phone) 07825008860

Complaints Contact

via the Careline - details on pack

P: (Phone) 0800 783 3728

Commercial Contact

Iwan Phillips
Route to Market, Away From Home
Iwan.Phillips@unilever.com

P: (Phone) +44 7795 645460

The information on the [Erudus System](#) has been supplied by the manufacturers of the products and, whilst the owners of the Erudus System take steps to ensure the information is regularly updated, they give no warranty and no guarantee that the information is accurate. Product information and ingredients may change, please always read product labels carefully in addition to using the information provided by Erudus.

We do not accept liability for any inaccuracies or incorrect information contained on this site.
Please visit <http://www.erudus.com/terms-and-conditions> for full terms and conditions.