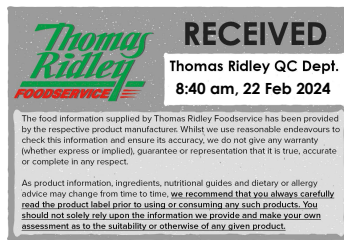


Changed Feb 17, 2024 00:00

Reviewed Feb 16, 2024 12:51

Erudus ID e2a8da819dbd461e91534c8d4cd4dd0a

Version 2.0



Thomas Ridley QC Dept.
8:40 am, 22 Feb 2024

The food information supplied by Thomas Ridley Foodservice has been provided by the respective product manufacturers. Whilst we use reasonable endeavours to check this information and ensure its accuracy, we do not give any warranty (whether express or implied), guarantee or representation that it is true, accurate or complete in any respect.

As product information, ingredients, nutritional guides and dietary or allergy advice may change from time to time, we recommend that you always carefully read the product label prior to using or consuming any such products. You should not solely rely upon the information we provide and make your own assessment as to the suitability or otherwise of any given product.



03087

CUISINE Aerosol Cream UHT 6x500g

Cuisine Aerosol Cream Uht 6x500g 6x500g

PRODUCT DESCRIPTION

White, highly aerated whipped cream, giving well defined peaks immediately after expulsion, with no weeping

Brand	Staple Food Group
Manufacturer Product Code	P0000094
Effective Date	Feb 16, 2024
Product Type	Food
Product Category	Whipping Cream & Double Cream
Storage Type	Chilled
Erudus ID	e2a8da819dbd461e91534c8d4cd4dd0a
Specification Type	Dairy



Inner Component GTIN	5020938282175
Outer Case GTIN	05020938283172



INGREDIENTS

Ingredient Declaration

CREAM (94.5%), Sugar (5%), Emulsifier: Mono and Diglycerides of Fatty Acids (E471). Stabiliser: Carrageenan (E407). Natural Vanilla Flavour, Propellant: Nitrous Oxide (E492).

ALLERGENS

Product Contains:

Celery/Celery	No	Mustard	No
Cereals Containing Gluten	No	Nuts (Tree)	No
Barley	No	Almond nuts	No
Oats	No	Brazil nuts	No
Rye	No	Cashew nuts	No
Wheat (including Spelt and Khorasan)	No	Hazelnuts	No
Crustacea	No	Macadamia (Queensland) nuts	No
Eggs	No	Pecan nuts	No
Fish	No	Pistachio nuts	No
Lupin	No	Walnuts	No
Milk	Yes	Peanuts	No
Molluscs	No	Sesame Seeds	No
		Soybeans	No
		Sulphur Dioxide and Sulphites	No

SUPPLEMENTARY INGREDIENT INFORMATION

Palm Oil	No	Alcoholic Strength %Vol (ABV)	0 % Vol
Hydrogenated Vegetable Oil/Fat	No		
GM Protein/DNA	No		

ADDITIVES

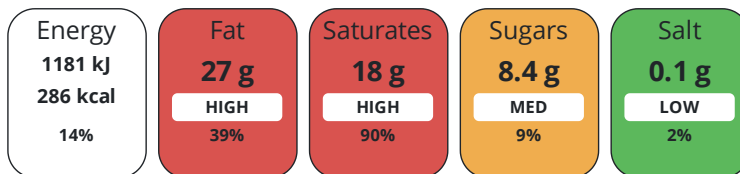
Product Contains:

Artificial Antioxidants	No	Artificial Flavourings	No
Artificial Colours	No	Artificial Preservatives	No
Artificial Flavour Enhancers	No	Artificial Sweeteners	No
Vegetarian Diet	Suitable for	Halal Diet	No
Kosher Diet	No		

DIET
SUITABILITY

NUTRITIONAL
INFORMATION

Each 100g/ml portion contains:



of your reference intake.

Typical values per 100g/ml : Energy 286kcal / 1181kJ

Nutrient	per 100g	RI per 100g	per 12.5g serving	RI per 12.5g serving
Energy (kJ)	1181 kJ	14%	147.6 kJ	2%
Energy (kcal)	286 kcal	14%	35.8 kcal	2%
Fat	27 g	39%	3.4 g	5%
of which Saturates	18 g	90%	2.3 g	12%
Carbohydrate	8.4 g	3%	1.1 g	0%
of which Sugars	8.4 g	9%	1.1 g	1%
Fibre	< 0.5 g		0.1 g	
Protein	2.3 g	5%	0.3 g	1%
Salt	0.1 g	2%	-	
Sodium	40 mg		5 mg	
Serving Size	12.5 g			

VITAMINS AND
MINERALS

Nutrient	per 100g	RI per 100g	per 12.5g serving	RI per 12.5g serving
Vitamin A	0.03 µg	0%	-	
Vitamin C	0 mg	0%	-	
Folate/Folic Acid	0.01 µg	0%	-	
Calcium	614 mg	77%	76.8 mg	10%
Iron	0.7 mg	5%	0.1 mg	1%
Zinc	3.3 mg	33%	0.4 mg	4%

SUPPLEMENTARY
NUTRITIONAL
INFORMATION

Cholesterol per 100 g/ml (UK/FR)	91.7 g
Non Milk Extrinsic Sugars per 100 g/ml	0 g

HANDLING & STORAGE INFORMATION

Directions For Use

Shake can firmly two or three times before use. Hold can upside down and press nozzle to release cream. Rinse inside nozzle after use with warm water.

Storage Instructions

Store in a cool place and keep refrigerated after opening.

Shelf Life from Time of Production	300 Days	Exempt From Shelf Life Labelling	No
Shelf Life From Opening	200 Days		

ACCREDITATIONS/ CERTIFICATIONS/ ASSURANCE SCHEMES



Other Accreditation

No other accreditation held

ORIGIN

Product Country of Origin/Place of Italy

Provenance

Additional Origin Details

Produced at the Co-Operlat Soc. site in Italy.

PRODUCT CHARACTERISTICS CONFIGURATION

Standards Testing

Case Configuration

Inner Pack Configuration

Total Quantity of Inner Components in 6 Units

Outer Case

Is the Outer Case Splittable? Yes

PRODUCT WEIGHTS

Inner Component

Variable Weight Consumer Item No

Inner Component Weight 500 g

Outer Case

Outer Case Gross Weight 3.71 kg

Outer Case Net Weight 3 kg

PRODUCT DIMENSIONS

Inner Component

Inner Component Depth 303 mm

Inner Component Width 66 mm

Inner Component Height 66 mm

Outer Case

Outer Case Depth 310 mm

Outer Case Width 140 mm

Outer Case Height 210 mm

PALLET INFORMATION

Quantity of Cases Per Pallet Layer 39 Cases

Pallet Height 1.75 MTR

Quantity of Layers Per Pallet 5 Layers

Pallet Gross Weight 775 kg

Quantity of Cases Per Pallet 195 Cases

PACKAGING

Inner Component Packaging

Type	Materials	Weight	Recycled Plastic %	Recyclable	Returnable	Composite
Can	Plastic	0.18 g	- %			
Can	Steel	110 g	- %			

Outer Case Packaging

Type	Materials	Weight	Recycled Plastic %	Recyclable	Returnable	Composite
Paper/Polyethylene	Plastic	32 g	- %			
Paper/Polyethylene	Paper/Cardboard	15.89 g	- %			

Transport Packaging

Type	Materials	Weight	Recycled Plastic %	Recyclable	Returnable	Composite
Other	Plastic	200 g	- %			
Other	Wood	22500 g	- %			

OTHER INFORMATION

Manufacturer Comments

Product is produced in Italy for Staple Dairy Products Ltd.

CONTACT INFORMATION

Address

Staple Food Group
Planwell House (Ground Floor), LEFA Business Park
35 Edgington Way
Sidcup
Kent
DA14 5BH
United Kingdom

P. (Phone) 0044 (0) 1689 888700

The information on the [Erudus System](#) has been supplied by the manufacturers of the products and, whilst the owners of the Erudus System take steps to ensure the information is regularly updated, they give no warranty and no guarantee that the information is accurate. Product information and ingredients may change, please always read product labels carefully in addition to using the information provided by Erudus.

We do not accept liability for any inaccuracies or incorrect information contained on this site.
Please visit <http://www.erudus.com/terms-and-conditions> for full terms and conditions.