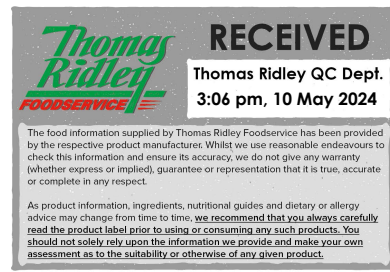


**Changed** May 09, 2024 09:53  
**Reviewed** May 09, 2024 09:53  
**Erudus ID** 94fdfff7966a4a01a6704840d5b3035f  
**Version** 2.0



03109

# Riverdene Peach Slices in juice 12 x 410g

Peach Slices In Juice 12x1x410g

## PRODUCT DESCRIPTION

Canned peach slices in grape juice

<b>Brand</b>	Martin Mathew & Co Ltd
<b>Manufacturer Product Code</b>	A36960
<b>Product Type</b>	Food
<b>Product Category</b>	Other
<b>Storage Type</b>	Ambient
<b>Erudus ID</b>	94fdfff7966a4a01a6704840d5b3035f
<b>Specification Type</b>	Generic



<b>Inner Component GTIN</b>	5017482001628
<b>Inner Pack GTIN</b>	5017482001628
<b>Inner Pack Product Code</b>	A36960



## INGREDIENTS

### Ingredient Declaration

Peaches (56%), water, pear juice, acidity regulator: citric acid.

## ALLERGENS

Product Contains:

<b>Celery/Celeriac</b>	No
<b>Cereals Containing Gluten</b>	No
<b>Barley</b>	No
<b>Oats</b>	No
<b>Rye</b>	No
<b>Wheat (including Spelt and Khorasan)</b>	No
<b>Crustacea</b>	No
<b>Eggs</b>	No
<b>Fish</b>	No
<b>Lupin</b>	No
<b>Milk</b>	No
<b>Molluscs</b>	No
<b>Mustard</b>	No
<b>Nuts (Tree)</b>	No
<b>Almond nuts</b>	No
<b>Brazil nuts</b>	No
<b>Cashew nuts</b>	No
<b>Hazelnuts</b>	No
<b>Macadamia (Queensland) nuts</b>	No
<b>Pecan nuts</b>	No
<b>Pistachio nuts</b>	No
<b>Walnuts</b>	No
<b>Peanuts</b>	No
<b>Sesame Seeds</b>	No
<b>Soybeans</b>	No
<b>Sulphur Dioxide and Sulphites</b>	No

SUPPLEMENTARY INGREDIENT INFORMATION

<b>Palm Oil</b>	No
<b>Hydrogenated Vegetable Oil/Fat</b>	No
<b>GM Protein/DNA</b>	No
<b>Alcoholic Strength %Vol (ABV)</b>	0 % Vol

ADDITIVES

Product Contains:

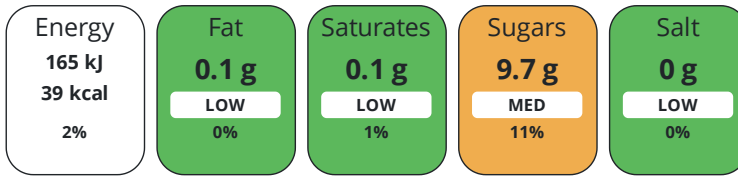
<b>Artificial Antioxidants</b>	No
<b>Artificial Colours</b>	No
<b>Artificial Flavour Enhancers</b>	No
<b>Artificial Flavourings</b>	No
<b>Artificial Preservatives</b>	No
<b>Artificial Sweeteners</b>	No

DIET SUITABILITY

<b>Vegan Diet</b>	Suitable for	<b>Vegetarian Diet</b>	Suitable for
<b>Halal Diet</b>	No	<b>Kosher Diet</b>	No

NUTRITIONAL INFORMATION

Each 100g/ml portion contains:



of your reference intake.

Typical values per 100g/ml : Energy 39kcal / 165kj

Nutrient	per 100g	RI per 100g	per 60g serving	RI per 60g serving
Energy (kJ)	165 kJ	2%	99 kJ	1%
Energy (kcal)	39 kcal	2%	23.4 kcal	1%
Fat	0.1 g	0%	0.1 g	0%
of which Saturates	0.1 g	1%	0.1 g	1%
of which Mono-unsaturates	0 g		-	
of which Polyunsaturates	0 g		-	
Carbohydrate	9.7 g	4%	5.8 g	2%
of which Sugars	9.7 g	11%	5.8 g	6%
of which Polyols	0 g		-	
of which Starch	0 g		-	
Fibre	0.8 g		0.5 g	
Protein	0.6 g	1%	0.4 g	1%
Salt	0 g	0%	-	
Sodium	0 mg		-	
Serving Size			60 g	

SUPPLEMENTARY NUTRITIONAL INFORMATION

Trans Fats per 100 g/ml	0 g
-------------------------	-----

HANDLING & STORAGE INFORMATION

Directions For Use

Open can, use as required. This product can be consumed immediately

Storage Instructions

Dry ambient. Once opened, remove from can, store in a covered non-metallic container at < 5C

Shelf Life from Time of Production	1100 Days
------------------------------------	-----------

Exempt From Shelf Life Labelling	No
----------------------------------	----

ACCREDITATIONS/ CERTIFICATIONS/ ASSURANCE SCHEMES

BRCGS Certified

ORIGIN

Product Country of Origin/Place of Provenance	China
---	-------

PRODUCT CHARACTERISTICS

Standards Testing

Do you undertake trend analysis of microbiological results?	Yes
---	-----

Is shelf life testing undertaken?	Yes
-----------------------------------	-----

Analytical Standards

Test	Description	Frequency	Target	Range	Sample (g or ml)
Brix (°Bx)		Every Batch	=10	9 to 11	500
pH		Every Batch	=3	2.9 to 3.2	500

#### CONFIGURATION

##### Case Configuration

<b>Total Quantity of Inner Components in Outer Case</b>	12 Units
<b>Total Quantity of Inner Packs in Outer Case</b>	12 Units
<b>Is the Outer Case Splittable?</b>	Yes
Inner Pack Configuration	
<b>Is Inner Pack Splittable?</b>	No
<b>Quantity of Inner Components in Inner Pack</b>	1

#### PRODUCT WEIGHTS

##### Inner Component

<b>Variable Weight Consumer Item</b>	No
<b>Inner Component Weight</b>	410 g
<b>Net Drained Weight</b>	0.24 g

##### Outer Case

<b>Outer Case Gross Weight</b>	5.64 kg
<b>Outer Case Net Weight</b>	4.93 kg

#### PRODUCT DIMENSIONS

##### Inner Component

<b>Inner Component Depth</b>	86 mm
<b>Inner Component Width</b>	86 mm
<b>Inner Component Height</b>	112 mm

##### Outer Case

<b>Outer Case Depth</b>	300 mm
<b>Outer Case Width</b>	225 mm
<b>Outer Case Height</b>	115 mm

#### PALLET INFORMATION

<b>Quantity of Cases Per Pallet Layer</b>	16 Cases
<b>Quantity of Layers Per Pallet</b>	12 Layers
<b>Quantity of Cases Per Pallet</b>	192 Cases
<b>Pallet Height</b>	1.4 MTR
<b>Pallet Gross Weight</b>	1150 kg

#### PACKAGING

##### Inner Component Packaging

Type	Materials	Weight	Recycled Plastic %	Recyclable	Returnable	Composite
Can	Paper/Cardboard	8 g	- %			
Can	Steel	75 g	- %			

##### Outer Case Packaging

Type	Materials	Weight	Recycled Plastic %	Recyclable	Returnable	Composite
Case	Plastic	16 g	- %			
Case	Paper/Cardboard	22 g	- %			

## Transport Packaging

Type	Materials	Weight	Recycled Plastic %	Recyclable	Returnable	Composite
Other	Plastic	1500 g	- %		Yes	
Other	Paper/Cardboard	15 g	- %		Yes	
Other	Wood	22000 g	- %		Yes	

## OTHER INFORMATION

### Manufacturer Comments

On receipt of this spec for use with our products, please sign and return by e mail or hard copy. Once utilised, if no confirmation is received within 4 weeks it will be assumed the specification is acknowledged and accepted. Any formulation changes or allergen updates on our products will be displayed on pack.

### CONTACT INFORMATION

Address

Martin Mathew & Co Ltd

50a St Andrew Street

Hertford

Herts

SG14 1JA

United Kingdom

P. (Phone) 01992641641

The information on the [Erudus System](#) has been supplied by the manufacturers of the products and, whilst the owners of the Erudus System take steps to ensure the information is regularly updated, they give no warranty and no guarantee that the information is accurate. Product information and ingredients may change, please always read product labels carefully in addition to using the information provided by Erudus.

We do not accept liability for any inaccuracies or incorrect information contained on this site.

Please visit <http://www.erudus.com/terms-and-conditions> for full terms and conditions.