

Changed May 18, 2022 16:32

Erudus ID 379305a9edae45b39457fa64402ae033

Version 1.0

03161

# Karma Drinks Karma Cola (24 Pack) Bottles - Organic

Karma Cola (24 Pack) Bottles - Organic 24x524g

## PRODUCT DESCRIPTION

Karma Cola (24 Pack) Bottles - Organic Cola Flavoured 300ml Organic Soft Drink x24 per case

Brand	Karma Drinks UK Limited
Manufacturer Product Code	KC24B
Product Type	Drink
Product Category	Drinks - General
Storage Type	Ambient
Erudus ID	379305a9edae45b39457fa64402ae033
Specification Type	Legacy



Inner Component GTIN	9421902090028
Outer Case GTIN	09421902090462



## INGREDIENTS

### Ingredient Declaration

Carbonated water, organic sugar (9.5%), organic **BARLEY** malt extract (0.7%), natural cola flavouring, organic lemon juice from concentrate (0.2%), natural vanilla extract.

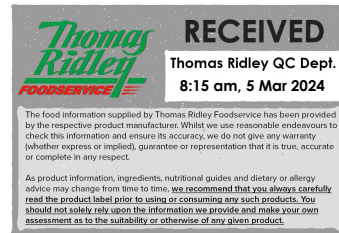
## ALLERGENS

Product Contains:

<b>Celery/Celeriac</b>	No	<b>Mustard</b>	No
<b>Cereals Containing Gluten</b>	Yes	<b>Nuts (Tree)</b>	No
<b>Barley</b>	Yes	<b>Almond nuts</b>	No
<b>Oats</b>	No	<b>Brazil nuts</b>	No
<b>Rye</b>	No	<b>Cashew nuts</b>	No
<b>Wheat (including Spelt and Khorasan)</b>	No	<b>Hazelnuts</b>	No
<b>Gluten content &lt;20ppm</b>	Yes	<b>Macadamia (Queensland) nuts</b>	No
<b>Crustacea</b>	No	<b>Pecan nuts</b>	No
<b>Eggs</b>	No	<b>Pistachio nuts</b>	No
<b>Fish</b>	No	<b>Walnuts</b>	No
<b>Lupin</b>	No	<b>Peanuts</b>	No
<b>Milk</b>	No	<b>Sesame Seeds</b>	No
<b>Molluscs</b>	No	<b>Soybeans</b>	No
		<b>Sulphur Dioxide and Sulphites</b>	No

### Additional Allergen Information

Contains Barley



SUPPLEMENTARY  
INGREDIENT  
INFORMATION

<b>Palm Oil</b>	No
<b>Hydrogenated Vegetable Oil/Fat</b>	No
<b>GM Protein/DNA</b>	No

ADDITIVES

Product Contains:

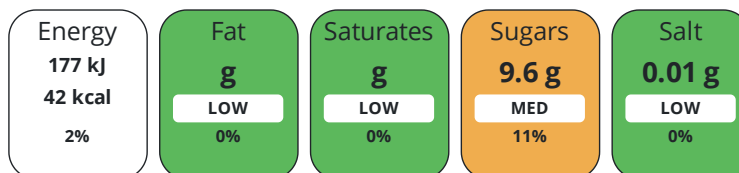
<b>Artificial Antioxidants</b>	No	<b>Artificial Flavourings</b>	No
<b>Artificial Colours</b>	No	<b>Artificial Preservatives</b>	No
<b>Artificial Flavour Enhancers</b>	No	<b>Artificial Sweeteners</b>	No

DIET  
SUITABILITY

<b>Suitable for Coeliacs</b>	Yes	<b>Halal Diet</b>	No
<b>Kosher Diet</b>	No	<b>Vegetarian Diet</b>	Suitable for
<b>Vegan Diet</b>	Suitable for		

NUTRITIONAL  
INFORMATION

Each 100g/ml portion contains:



of your reference intake.

Typical values per 100g/ml : Energy 42kcal / 177kJ

Nutrient	per 100g/ml	RI per 100g/ml	per 300g/ml serving	RI per 300g/ml serving
<b>Energy (kJ)</b>	176.6 kJ	2%	529.8 kJ	6%
<b>Energy (kcal)</b>	42 kcal	2%	126 kcal	6%
<b>Fat</b>	0 g	0%	-	
<b>of which Saturates</b>	0 g	0%	-	
<b>of which Mono-unsaturates</b>	0 g		-	
<b>of which Polyunsaturates</b>	0 g		-	
<b>Carbohydrate</b>	9.8 g	4%	29.4 g	11%
<b>of which Sugars</b>	9.6 g	11%	28.8 g	32%
<b>of which Polyols</b>	0 g		-	
<b>of which Starch</b>	0 g		-	
<b>Fibre</b>	0 g		-	
<b>Protein</b>	0 g	0%	-	
<b>Salt</b>	0.01 g	0%	-	
<b>Sodium</b>	0 mg		-	
<b>Serving Size</b>	300 g			

SUPPLEMENTARY  
NUTRITIONAL  
INFORMATION

<b>Trans Fats per 100 g/ml</b>	0 g
--------------------------------	-----

HANDLING &  
STORAGE  
INFORMATION

**Directions For Use**

Refrigerate before drinking Drink in 3 days once opened

**Storage Instructions**

Ambient Storage

<b>Shelf Life from Time of Production</b>	457 Days
---	----------



ORIGIN **Product Country of Origin/Place of** United Kingdom

**Provenance**

PRODUCT CHARACTERISTICS

Standards Testing

**Do you undertake trend analysis of microbiological results?** Yes

**Is shelf life testing undertaken?** Yes

CONFIGURATION

Case Configuration

Inner Pack Configuration

**Total Quantity of Inner Components in Outer Case** 24 Units

**Count per Inner Component** 24

**Is the Outer Case Splittable?** No

PRODUCT WEIGHTS

Inner Component

**Variable Weight Consumer Item** No

**Inner Component Weight** 524 g

**Net Drained Weight** 0.224 kg

**Weight/Volume**

300ml

Outer Case

**Outer Case Gross Weight** 13 kg

**Outer Case Net Weight** 7.2 kg

PRODUCT DIMENSIONS

Inner Component

**Inner Component Depth** 59 mm

**Inner Component Width** 59 mm

**Inner Component Height** 208 mm

Outer Case

**Outer Case Depth** 355 mm

**Outer Case Width** 235 mm

**Outer Case Height** 212 mm

PALLET INFORMATION

**Quantity of Cases Per Pallet Layer** 12 Cases

**Pallet Height** 1.4 MTR

**Quantity of Layers Per Pallet** 6 Layers

**Pallet Gross Weight** 950 kg

**Quantity of Cases Per Pallet** 72 Cases

PACKAGING

Inner Component Packaging

Type	Materials	Weight	Recycled Plastic %	Recyclable	Returnable	Composite
Bottle	Plastic	2 g	0.00 %			
Bottle	Aluminium	2 g	- %			
Bottle	Glass	220 g	- %			

Outer Case Packaging

Type	Materials	Weight	Recycled Plastic %	Recyclable	Returnable	Composite
Case	Paper/Cardboard	235 g	- %			

OTHER INFORMATION

**Commodity Code** 22021000

CONTACT  
INFORMATION

Address

Karma Drinks UK Limited  
3rd Floor  
86-90 Paul Street  
London  
EC2A 4NE  
United Kingdom

The information on the [Erudus System](#) has been supplied by the manufacturers of the products and, whilst the owners of the Erudus System take steps to ensure the information is regularly updated, they give no warranty and no guarantee that the information is accurate. Product information and ingredients may change, please always read product labels carefully in addition to using the information provided by Erudus.

We do not accept liability for any inaccuracies or incorrect information contained on this site.  
Please visit <http://www.erudus.com/terms-and-conditions> for full terms and conditions.