

Changed May 19, 2022 16:02

Erudus ID 540d8f38c14a4a718d0d33faa6e48d93

Version 1.0

03165

# Karma Drinks Gingerella Ginger Ale (24 Pack) Bottles - Organic

Gingerella (24 Pack) Bottles - Organic 24x524g

## PRODUCT DESCRIPTION

Gingerella (24 Pack) Bottles - Organic Ginger Ale Flavoured 300ml Organic Soft Drink x24 per case

Brand	Karma Drinks UK Limited
Manufacturer Product Code	GA24B
Product Type	Drink
Product Category	Drinks - General
Storage Type	Ambient
Erudus ID	540d8f38c14a4a718d0d33faa6e48d93
Specification Type	Legacy



Inner Component GTIN 9421902090035

Outer Case GTIN 09421902090479



## INGREDIENTS

### Ingredient Declaration

Carbonated water, organic sugar (7.9%), organic ginger extract (0.7%), organic lemon juice from concentrate (0.3%), natural clove, cassia, capsicum, grapefruit and vanilla flavouring, ascorbic acid.

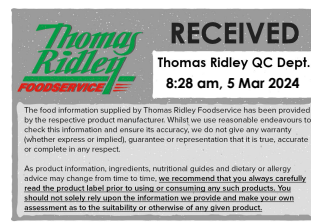
## ALLERGENS

Product Contains:

<b>Celery/Celeriac</b>	No	<b>Mustard</b>	No
<b>Cereals Containing Gluten</b>	No	<b>Nuts (Tree)</b>	No
<b>Barley</b>	No	<b>Almond nuts</b>	No
<b>Oats</b>	No	<b>Brazil nuts</b>	No
<b>Rye</b>	No	<b>Cashew nuts</b>	No
<b>Wheat (including Spelt and Khorasan)</b>	No	<b>Hazelnuts</b>	No
<b>Gluten content &lt;20ppm</b>	Yes	<b>Macadamia (Queensland) nuts</b>	No
<b>Crustacea</b>	No	<b>Pecan nuts</b>	No
<b>Eggs</b>	No	<b>Pistachio nuts</b>	No
<b>Fish</b>	No	<b>Walnuts</b>	No
<b>Lupin</b>	No	<b>Peanuts</b>	No
<b>Milk</b>	No	<b>Sesame Seeds</b>	No
<b>Molluscs</b>	No	<b>Soybeans</b>	No
		<b>Sulphur Dioxide and Sulphites</b>	No

## SUPPLEMENTARY INGREDIENT INFORMATION

<b>Palm Oil</b>	No
<b>Hydrogenated Vegetable Oil/Fat</b>	No
<b>GM Protein/DNA</b>	No



ADDITIVES

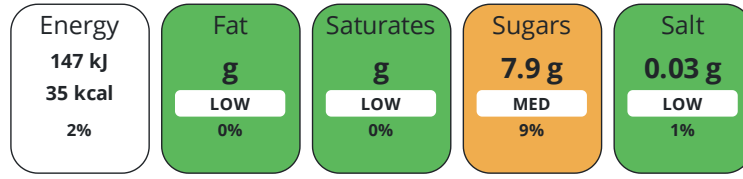
Product Contains:

<b>Artificial Antioxidants</b>	No	<b>Artificial Flavourings</b>	No
<b>Artificial Colours</b>	No	<b>Artificial Preservatives</b>	No
<b>Artificial Flavour Enhancers</b>	No	<b>Artificial Sweeteners</b>	No
<b>Suitable for Coeliacs</b>	Yes	<b>Halal Diet</b>	No
<b>Kosher Diet</b>	No	<b>Vegetarian Diet</b>	Suitable for
<b>Vegan Diet</b>	Suitable for		

DIET SUITABILITY

NUTRITIONAL INFORMATION

Each 100g/ml portion contains:



of your reference intake.

Typical values per 100g/ml : Energy 35kcal / 147kj

Nutrient	per 100g/ml	RI per 100g/ml	per 300g/ml serving	RI per 300g/ml serving
<b>Energy (kJ)</b>	147.4 kJ	2%	442.2 kJ	5%
<b>Energy (kcal)</b>	35 kcal	2%	105 kcal	5%
<b>Fat</b>	0 g	0%	-	-
of which Saturates	0 g	0%	-	-
of which Mono-unsaturates	0 g	-	-	-
of which Polyunsaturates	0 g	-	-	-
<b>Carbohydrate</b>	8 g	3%	24 g	9%
of which Sugars	7.9 g	9%	23.7 g	26%
of which Polyols	0 g	-	-	-
of which Starch	0 g	-	-	-
<b>Protein</b>	0 g	0%	-	-
<b>Salt</b>	0.03 g	1%	0.1 g	2%

**Serving Size** 300 g

SUPPLEMENTARY NUTRITIONAL INFORMATION

**Trans Fats per 100 g/ml** 0 g

HANDLING & STORAGE INFORMATION

**Directions For Use**

Refrigerate before drinking Drink in 3 days once opened

**Storage Instructions**

Ambient Storage

**Shelf Life from Time of Production** 457 Days

ACCREDITATIONS/ CERTIFICATIONS/ ASSURANCE SCHEMES



ORIGIN

**Product Country of Origin/Place of Provenance** United Kingdom

PRODUCT CHARACTERISTICS	Standards Testing						
	<b>Do you undertake trend analysis of microbiological results?</b>	Yes	<b>Is shelf life testing undertaken?</b>		Yes		
CONFIGURATION	Case Configuration		Inner Pack Configuration				
	<b>Total Quantity of Inner Components in Outer Case</b>	24 Units	<b>Count per Inner Component</b>		24		
	<b>Is the Outer Case Splittable?</b>	No					
PRODUCT WEIGHTS	Inner Component						
	<b>Variable Weight Consumer Item</b>	No					
	<b>Inner Component Weight</b>	524 g					
	<b>Net Drained Weight</b>	0.224 kg					
	<b>Weight/Volume</b>		300ml				
	Outer Case						
PRODUCT DIMENSIONS	<b>Outer Case Gross Weight</b>		13 kg				
	<b>Outer Case Net Weight</b>		7.2 kg				
	Inner Component						
	<b>Inner Component Depth</b>		59 mm				
	<b>Inner Component Width</b>		59 mm				
	<b>Inner Component Height</b>		208 mm				
	Outer Case						
	<b>Outer Case Depth</b>		355 mm				
	<b>Outer Case Width</b>		235 mm				
	<b>Outer Case Height</b>		212 mm				
PALLET INFORMATION	<b>Quantity of Cases Per Pallet Layer</b>	12 Cases	<b>Pallet Height</b>		1.4 MTR		
	<b>Quantity of Layers Per Pallet</b>	6 Layers	<b>Pallet Gross Weight</b>		950 kg		
	<b>Quantity of Cases Per Pallet</b>	72 Cases					
PACKAGING	Inner Component Packaging						
	<b>Type</b>	<b>Materials</b>	<b>Weight</b>	<b>Recycled Plastic %</b>	<b>Recyclable</b>	<b>Returnable</b>	<b>Composite</b>
	Bottle	Plastic	2 g	- %			
	Bottle	Aluminium	2 g	- %			
	Bottle	Glass	220 g	- %			
	Outer Case Packaging						
	<b>Type</b>	<b>Materials</b>	<b>Weight</b>	<b>Recycled Plastic %</b>	<b>Recyclable</b>	<b>Returnable</b>	<b>Composite</b>
	Case	Paper/Cardboard	235 g	- %			
	OTHER INFORMATION	<b>Commodity Code</b>	22021000				
	CONTACT INFORMATION	Address Karma Drinks UK Limited 3rd Floor 86-90 Paul Street London EC2A 4NE United Kingdom					

The information on the [Erudus System](#) has been supplied by the manufacturers of the products and, whilst the owners of the Erudus System take steps to ensure the information is regularly updated, they give no warranty and no guarantee that the information is accurate. Product information and ingredients may change, please always read product labels carefully in addition to using the information provided by Erudus.

We do not accept liability for any inaccuracies or incorrect information contained on this site.  
Please visit <http://www.erudus.com/terms-and-conditions> for full terms and conditions.