

Changed May 23, 2022 15:35

Erudus ID 5a907a6a2a634e20a7461770b0f9ca77

Version 1.0

03166

Karma Drinks Lemony Lemonade (24 Pack) Bottles - Organic

Lemony (24 Pack) Bottles - Organic 24x524g

PRODUCT DESCRIPTION

Lemony (24 Pack) Bottles - Organic Lemonade Flavoured 300ml Organic Soft Drink x24 per case

Brand	Karma Drinks UK Limited
Manufacturer Product Code	LL24B
Product Type	Drink
Product Category	Drinks - General
Storage Type	Ambient
Erudus ID	5a907a6a2a634e20a7461770b0f9ca77
Specification Type	Legacy



Inner Component GTIN 9421902090264

Outer Case GTIN 09421902090486



INGREDIENTS

Ingredient Declaration

Carbonated water, organic sugar (7.9%), organic lemon juice from concentrate (0.9%), natural lemon flavours (0.11%), antioxidant, ascorbic acid.

ALLERGENS

Product Contains:

Celery/Celeriac	No	Mustard	No
Cereals Containing Gluten	No	Nuts (Tree)	No
Barley	No	Almond nuts	No
Oats	No	Brazil nuts	No
Rye	No	Cashew nuts	No
Wheat (including Spelt and Khorasan)	No	Hazelnuts	No
Gluten content <20ppm	Yes	Macadamia (Queensland) nuts	No
Crustacea	No	Pecan nuts	No
Eggs	No	Pistachio nuts	No
Fish	No	Walnuts	No
Lupin	No	Peanuts	No
Milk	No	Sesame Seeds	No
Molluscs	No	Soybeans	No
		Sulphur Dioxide and Sulphites	No

SUPPLEMENTARY INGREDIENT INFORMATION

Palm Oil	No
Hydrogenated Vegetable Oil/Fat	No
GM Protein/DNA	No

RECEIVED

Thomas Ridley QC Dept.
8:38 am, 5 Mar 2024

The food information supplied by Thomas Ridley Foodservice has been provided by the respective product manufacturer. Whilst we use reasonable endeavours to check this information and ensure its accuracy, we do not give any warranty (whether express or implied), guarantee or representation that it is true, accurate or complete in any respect.

As product information, ingredients, nutritional guides and dietary or allergy advice may change from time to time, we recommend that you always carefully read the product label prior to using or consuming any such products. You should not solely rely upon the information we provide and make your own assessment as to the suitability or otherwise of any given product.



ADDITIVES

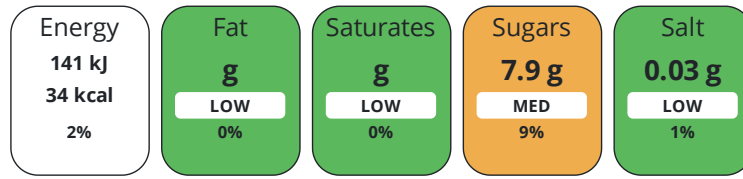
Product Contains:

Artificial Antioxidants	No	Artificial Flavourings	No
Artificial Colours	No	Artificial Preservatives	No
Artificial Flavour Enhancers	No	Artificial Sweeteners	No
Suitable for Coeliacs	Yes	Halal Diet	No
Kosher Diet	No	Vegetarian Diet	Suitable for
Vegan Diet	Suitable for		

DIET SUITABILITY

NUTRITIONAL INFORMATION

Each 100g/ml portion contains:



of your reference intake.

Typical values per 100g/ml : Energy 34kcal / 141kJ

Nutrient	per 100g/ml	RI per 100g/ml	per 300g/ml serving	RI per 300g/ml serving
Energy (kJ)	140.6 kJ	2%	421.8 kJ	5%
Energy (kcal)	34 kcal	2%	102 kcal	5%
Fat	0 g	0%	-	-
of which Saturates	0 g	0%	-	-
of which Mono-unsaturates	0 g	-	-	-
of which Polyunsaturates	0 g	-	-	-
Carbohydrate	7.9 g	3%	23.7 g	9%
of which Sugars	7.9 g	9%	23.7 g	26%
Protein	0 g	0%	-	-
Salt	0.03 g	1%	0.1 g	2%

Serving Size 300 g

SUPPLEMENTARY NUTRITIONAL INFORMATION

Trans Fats per 100 g/ml 0 g

HANDLING & STORAGE INFORMATION

Directions For Use

Refrigerate before drinking Drink in 3 days once opened

Storage Instructions

Ambient Storage

Shelf Life from Time of Production 457 Days

ACCREDITATIONS/ CERTIFICATIONS/ ASSURANCE SCHEMES



ORIGIN

Product Country of Origin/Place of Provenance United Kingdom

Additional Origin Details

Made with lemons from Sicily

PRODUCT CHARACTERISTICS	Standards Testing						
	Do you undertake trend analysis of microbiological results?	Yes	Is shelf life testing undertaken?		Yes		
CONFIGURATION	Case Configuration		Inner Pack Configuration				
	Total Quantity of Inner Components in Outer Case	24 Units	Count per Inner Component		24		
	Is the Outer Case Splittable?	No					
PRODUCT WEIGHTS	Inner Component						
	Variable Weight Consumer Item	No					
	Inner Component Weight	524 g					
	Net Drained Weight	0.224 kg					
	Weight/Volume						
	300ml						
	Outer Case						
	Outer Case Gross Weight	13 kg					
	Outer Case Net Weight	7.2 kg					
PRODUCT DIMENSIONS	Inner Component						
	Inner Component Depth	59 mm					
	Inner Component Width	59 mm					
	Inner Component Height	208 mm					
	Outer Case						
	Outer Case Depth	355 mm					
	Outer Case Width	235 mm					
	Outer Case Height	212 mm					
PALLET INFORMATION	Quantity of Cases Per Pallet Layer	12 Cases	Pallet Height		1.4 MTR		
	Quantity of Layers Per Pallet	6 Layers	Pallet Gross Weight		950 kg		
	Quantity of Cases Per Pallet	72 Cases					
PACKAGING	Inner Component Packaging						
	Type	Materials	Weight	Recycled Plastic %	Recyclable	Returnable	Composite
	Bottle	Plastic	2 g	- %			
	Bottle	Glass	220 g	- %			
	Outer Case Packaging						
	Type	Materials	Weight	Recycled Plastic %	Recyclable	Returnable	Composite
	Case	Paper/Cardboard	235 g	- %			
OTHER INFORMATION	Commodity Code	22021000					
CONTACT INFORMATION	Address						
	Karma Drinks UK Limited						
	3rd Floor						
	86-90 Paul Street						
	London						
	EC2A 4NE United Kingdom						

The information on the [Erudus System](#) has been supplied by the manufacturers of the products and, whilst the owners of the Erudus System take steps to ensure the information is regularly updated, they give no warranty and no guarantee that the information is accurate. Product information and ingredients may change, please always read product labels carefully in addition to using the information provided by Erudus.

We do not accept liability for any inaccuracies or incorrect information contained on this site.
Please visit <http://www.erudus.com/terms-and-conditions> for full terms and conditions.