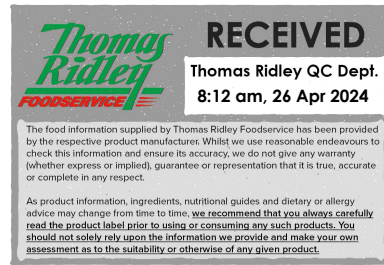


Changed Apr 25, 2024 00:00
Reviewed Apr 24, 2024 14:14
Erudus ID 6228871db1c440feaa0fea80d701ab7e
Version 2.0



Thomas Ridley
FOODSERVICE

RECEIVED
Thomas Ridley QC Dept.
8:12 am, 26 Apr 2024

The food information supplied by Thomas Ridley Foodservice has been provided by the respective product manufacturer. Whilst we use reasonable endeavours to check this information and ensure its accuracy, we do not give any warranty (whether express or implied), guarantee or representation that it is true, accurate or complete in any respect.

As product information, ingredients, nutritional guides and dietary or allergy advice may change from time to time, we recommend that you always carefully read the product label prior to using or consuming any such products. You should not solely rely upon the information we provide and make your own assessment as to the suitability or otherwise of any given product.



Folkington's mango juice nectar 250ml

Mango Juice Nectar 12x250ml

PRODUCT DESCRIPTION

Folkington's mango nectar juice is pressed from Magdalena River mangos harvested from groves situated along the Cauca and Magdalena rivers in western Colombia. Both river valleys are rich in biodiversity, crossing a wide variety of ecosystems before reaching the Caribbean Sea.

Brand	Folkington's / Metro Drinks
Manufacturer Product Code	FO025MA
Manufacturer Version Number	2024 Spec Sheet - Updates
Effective Date	Apr 24, 2024
Product Type	Drink
Product Category	Juices and Cordials
Storage Type	Ambient
Erudus ID	6228871db1c440feaa0fea80d701ab7e
Specification Type	Drinks



Inner Component GTIN	5060042981090
Outer Case GTIN	5060042981106



INGREDIENTS

Ingredient Declaration

Water, pure Magdalena River mango juice NFC: (38%) apple and grape syrup, lemon juice*, antioxidant: Vitamin C

**from concentrate for extra acidity*

ALLERGENS

Product Contains:

Celery/Celeriac	No
Cereals Containing Gluten	No
Barley	No
Oats	No
Rye	No
Wheat (including Spelt and Khorasan)	No
Crustacea	No
Eggs	No
Fish	No
Lupin	No
Milk	No
Molluscs	No
Mustard	No
Nuts (Tree)	No
Almond nuts	No
Brazil nuts	No
Cashew nuts	No
Hazelnuts	No
Macadamia (Queensland) nuts	No
Pecan nuts	No
Pistachio nuts	No
Walnuts	No
Peanuts	No
Sesame Seeds	No
Soybeans	No
Sulphur Dioxide and Sulphites	No

Additional Allergen Information

No Allergens

SUPPLEMENTARY INGREDIENT INFORMATION

Palm Oil	No
Hydrogenated Vegetable Oil/Fat	No
GM Protein/DNA	No

ADDITIVES

Product Contains:

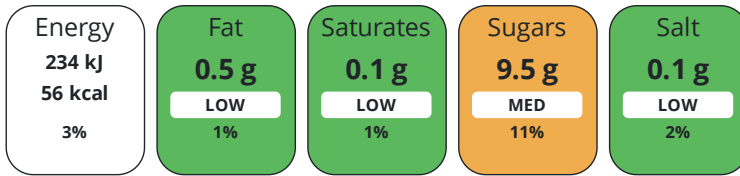
Artificial Antioxidants	Yes
Artificial Colours	No
Artificial Flavour Enhancers	No
Artificial Flavourings	No
Artificial Preservatives	No
Artificial Sweeteners	No

DIET SUITABILITY

Vegan Diet	Suitable for	Vegetarian Diet	Suitable for
Halal Diet	No	Kosher Diet	No

NUTRITIONAL INFORMATION

Each 100g/ml portion contains:



of your reference intake.

Typical values per 100g/ml : Energy 56kcal / 234kj

Nutrient	per 100ml	RI per 100ml	per 100ml serving	RI per 100ml serving
Energy (kJ)	234 kJ	3%	234 kJ	3%
Energy (kcal)	56 kcal	3%	56 kcal	3%
Fat	< 0.5 g	1%	0.5 g	1%
of which Saturates	< 0.1 g	1%	0.1 g	1%
Carbohydrate	13.2 g	5%	13.2 g	5%
of which Sugars	9.5 g	11%	9.5 g	11%
Protein	0.6 g	1%	0.6 g	1%
Salt	0.1 g	2%	0.1 g	2%
Sodium	< 0.01 mg		-	
Serving Size			100 ml	

SUPPLEMENTARY NUTRITIONAL INFORMATION

HANDLING & STORAGE INFORMATION

Directions For Use

Do not consume if safety button on cap does not pop up on first opening. Shake well:

Storage Instructions

Store at room temperature and away from direct sunlight

Storage Instructions After Opening

Once opened, keep refrigerated below 5 deg C and use within 3 days

Shelf Life from Time of Production

728 Days

Exempt From Shelf Life Labelling

No

ACCREDITATIONS/ CERTIFICATIONS/ ASSURANCE SCHEMES

BRCGS Certified

Other Accreditation

ORIGIN

Product Country of Origin/Place of

Spain

Provenance

PRODUCT CHARACTERISTICS

Standards Testing

CONFIGURATION

Case Configuration

Total Quantity of Inner Components in Outer Case

12 Units

Is the Outer Case Splittable?

Yes

Inner Pack Configuration

PRODUCT WEIGHTS
Inner Component

Inner Component Volume	250 ml
Outer Case	
Outer Case Gross Weight	5.04 kg
Outer Case Net Weight	3.12 kg

PRODUCT DIMENSIONS
Inner Component

Inner Component Depth	55 mm
Inner Component Width	55 mm
Inner Component Height	160 mm

Outer Case

Outer Case Depth	240 mm
Outer Case Width	185 mm
Outer Case Height	160 mm

PALLET INFORMATION

Quantity of Cases Per Pallet Layer	26 Cases
Quantity of Layers Per Pallet	8 Layers
Quantity of Cases Per Pallet	208 Cases
Pallet Height	1.28 MTR
Pallet Gross Weight	1075 kg

PACKAGING
Inner Component Packaging

Type	Materials	Weight	Recycled Plastic %	Recyclable	Returnable	Composite
Bottle	Glass	142 g	- %	Yes	No	
Lid	Steel	5 g	- %	Yes	No	
Sleeve	Plastic / PET (Polyethylene Terethphalate)	1.6 g	30 %	Yes	No	

Outer Case Packaging

Type	Materials	Weight	Recycled Plastic %	Recyclable	Returnable	Composite
Box	Paper/Cardboard	131 g	- %	Yes	No	

Transport Packaging

Type	Materials	Weight	Recycled Plastic %	Recyclable	Returnable	Composite
Other	Plastic / LDPE (Low Density Polyethylene)	250 g	30 %	Yes	No	
Other	Wood	28000 g	- %		Yes	

MARKETING INFORMATION

Marketing Description

Tasting notes: Thick creamy fresh mangos. The Magdalena River variety is quite peachy in taste.

OTHER INFORMATION

Intrastat/Taric Code	22029010
Commodity Code	22029919
Value Added Tax Rate	20%

Manufacturer Comments

N/A

CONTACT INFORMATION

Address

Folkington's / Metro Drinks

The Workshop

Endlewick House

Arlington

BN26 6RU

England

P: (Phone) 01323 485602

The information on the [Erudus System](#) has been supplied by the manufacturers of the products and, whilst the owners of the Erudus System take steps to ensure the information is regularly updated, they give no warranty and no guarantee that the information is accurate. Product information and ingredients may change, please always read product labels carefully in addition to using the information provided by Erudus.

We do not accept liability for any inaccuracies or incorrect information contained on this site.

Please visit <http://www.erudus.com/terms-and-conditions> for full terms and conditions.