

Changed Sep 10, 2024 13:29

Reviewed Sep 10, 2024 13:29

Erudus ID 7efccc60823143c7b49684897d9f5c58

Version 2.0

03293

# Blue Horizon 027 IQF Cod Skin On Boneless 230-290g (8-10oz) Fillet (14 count pack)

Cod Fillet Skin On & Boneless 230-290g

## PRODUCT DESCRIPTION

Skin On Boneless Whole fillets of Cod which have been individually quick frozen, no welded fillets permitted. Fillets shall have a protective water glaze applied of 20% (+/-2)

Brand	Smales Fish Merchants Ltd
Manufacturer Product Code	108276
Product Type	Food
Product Category	Fish - Portioned
Storage Type	Frozen
Erudus ID	7efccc60823143c7b49684897d9f5c58
Specification Type	Fish and Seafood
Outer Case GTIN	5024113001704



## INGREDIENTS

### Ingredient Declaration

Cod 80% (Gadus morhua) (FISH), Water 20% (protective glaze)

## ALLERGENS

Product Contains:

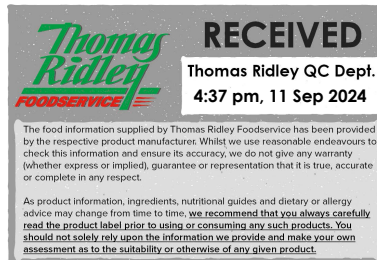
Celery/Celeriac	No	Mustard	No
Cereals Containing Gluten	No	Nuts (Tree)	No
Barley	No	Almond nuts	No
Oats	No	Brazil nuts	No
Rye	No	Cashew nuts	No
Wheat (including Spelt and Khorasan)	No	Hazelnuts	No
Crustacea	No	Macadamia (Queensland) nuts	No
Eggs	No	Pecan nuts	No
Fish	Yes	Pistachio nuts	No
Lupin	No	Walnuts	No
Milk	No	Peanuts	No
Molluscs	No	Sesame Seeds	No
		Soybeans	No
		Sulphur Dioxide and Sulphites	No

### Additional Allergen Information

Contains: FISH

## SUPPLEMENTARY INGREDIENT INFORMATION

Palm Oil	No
Hydrogenated Vegetable Oil/Fat	No
GM Protein/DNA	No



ADDITIVES

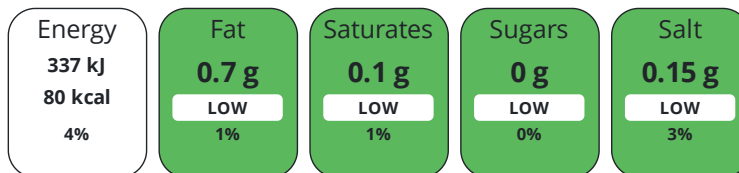
Product Contains:

<b>Artificial Antioxidants</b>	No	<b>Artificial Flavourings</b>	No
<b>Artificial Colours</b>	No	<b>Artificial Preservatives</b>	No
<b>Artificial Flavour Enhancers</b>	No	<b>Artificial Sweeteners</b>	No
<b>Halal Diet</b>	No	<b>Kosher Diet</b>	No

DIET SUITABILITY

NUTRITIONAL INFORMATION

Each 100g/ml portion contains:



of your reference intake.

Typical values per 100g/ml : Energy 80kcal / 337kj

Nutrient	per 100g	RI per 100g
<b>Energy (kJ)</b>	337 kJ	4%
<b>Energy (kcal)</b>	80 kcal	4%
<b>Fat</b>	0.7 g	1%
of which Saturates	0.1 g	1%
of which Mono-unsaturates	0.1 g	
of which Polyunsaturates	0.3 g	
<b>Carbohydrate</b>	0 g	0%
of which Sugars	0 g	0%
<b>Fibre</b>	0 g	
<b>Protein</b>	18.3 g	37%
<b>Salt</b>	0.15 g	3%

VITAMINS AND MINERALS

Nutrient	per 100g	RI per 100g
<b>Vitamin A</b>	2 µg	0%
<b>Vitamin C</b>	0 mg	0%
<b>Folate/Folic Acid</b>	12 µg	6%
<b>Calcium</b>	9 mg	1%
<b>Iron</b>	0.1 mg	1%
<b>Zinc</b>	0.4 mg	4%

SUPPLEMENTARY NUTRITIONAL INFORMATION

HANDLING & STORAGE INFORMATION

**Directions For Use**

Keep Frozen. Once defrosted do not refreeze. Ensure food is cooked for a minimum 72oC for 2 minutes Defrost in a refrigerator at less than 5oC for 24 hours and then use within 24 hours

**Storage Instructions**

Keep Frozen. Once defrosted do not refreeze.

<b>Shelf Life from Time of Production</b>	730 Days
<b>Shelf Life Once Defrosted</b>	1 Days

ACCREDITATIONS/  
CERTIFICATIONS/  
ASSURANCE  
SCHEMES  
ORIGIN

**BRCGS Certified**

**Other Accreditation**

**Product Country of Origin/Place of** China, Ukraine

**Provenance**

**Additional Origin Details**

Packed in the UK or China Trawl Caught North East Atlantic (FAO27) (Sub Areas: Barents Sea, Norwegian Sea, Spitzbergen and Bear Island), Baltic Sea, Iceland and Faroes Grounds) North West Atlantic (FAO21)

**Catch Zone** 21 - Atlantic, Northwest, 27 - Atlantic, Northeast

**Fish Species** Cod (Atlantic) - Gadus morhua

PRODUCT  
CHARACTERISTICS

Standards Testing

**Do you undertake trend analysis of microbiological results?** No

**Is shelf life testing undertaken?** No

Microbiological Standards

Organism	Description	Frequency	Target	Maximum	Sample (g or ml)
Coliforms (cfu/g or ml)		Occasionally	<100	1000	100
E. Coli (cfu/g or ml)		Occasionally	<50	100	100
Listeria SPP (cfu/g or ml)		Occasionally	<0	0	25
Staphylococcus Aureus (cfu/g or ml)		Occasionally	<100	500	100
Total Viable Count (TVC) (cfu/g or ml)		Occasionally	<100000	1000000	100
Salmonella (cfu/g or ml)		Occasionally	<0	0	25

Physical Standards

Test	Description	Frequency	Target	Range	Sample (g or ml)
Glaze Level (%)		Occasionally	=20	18 to 22	100

CONFIGURATION

Case Configuration

Inner Pack Configuration

**Total Quantity of Inner Components in Outer Case** 1 Units

**Is the Outer Case Splittable?** No

PRODUCT  
WEIGHTS

Inner Component

**Variable Weight Consumer Item** Yes

Outer Case

**Outer Case Gross Weight** 3.22 kg

**Outer Case Net Weight** 2.58 kg

PRODUCT  
DIMENSIONS

Inner Component

**Inner Component Depth** 360 mm

**Inner Component Width** 250 mm

**Inner Component Height** 110 mm

Outer Case

**Outer Case Depth** 360 mm

**Outer Case Width** 250 mm

**Outer Case Height** 110 mm

PALLET INFORMATION

<b>Quantity of Cases Per Pallet Layer</b>	13 Cases	<b>Pallet Type</b>	UK Standard Pallet
<b>Quantity of Layers Per Pallet</b>	12 Layers	<b>Pallet Height</b>	1.7 MTR
<b>Quantity of Cases Per Pallet</b>	156 Cases	<b>Pallet Gross Weight</b>	568 kg

PACKAGING

Inner Component Packaging

Type	Materials	Weight	Recycled Plastic %	Recyclable	Returnable	Composite
Bag	Plastic	10 g	- %			

Outer Case Packaging

Type	Materials	Weight	Recycled Plastic %	Recyclable	Returnable	Composite
Case	Paper/Cardboard	340 g	- %			

OTHER INFORMATION

**Manufacturer Comments**

The minimum order quantity from Smales is one mixed pallet. So as long as you order a full pallet of product you could just order 1 case Smales themselves hold BRC in Wholesale and Distribution

CONTACT INFORMATION

Address

Smales Fish Merchants Ltd  
 30, West Dock Street  
 West Dock Street  
 Hull  
 HU3 4HL  
 England

Technical Contact

Sally Johnson  
 Technical Manager  
 sally.johnson@smales.co.uk

P: (Phone) 01482 593696

P: (Phone) 01482 324997

Complaints Contact

Sally Johnson  
 Technical Manager  
 sally.johnson@smales.co.uk

P: (Phone) 01482 593696

The information on the [Erudus System](#) has been supplied by the manufacturers of the products and, whilst the owners of the Erudus System take steps to ensure the information is regularly updated, they give no warranty and no guarantee that the information is accurate. Product information and ingredients may change, please always read product labels carefully in addition to using the information provided by Erudus.

We do not accept liability for any inaccuracies or incorrect information contained on this site. Please visit <http://www.erudus.com/terms-and-conditions> for full terms and conditions.