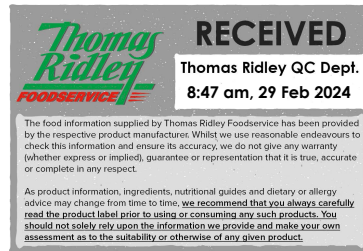


Changed Feb 29, 2024 05:52

Reviewed Feb 29, 2024 05:52

Erudus ID d9e0b11d51954fc8ad091d1d97a5ef25

Version 3.0



Thomas Ridley
FOODSERVICE

RECEIVED
Thomas Ridley QC Dept.
8:47 am, 29 Feb 2024

The food information supplied by Thomas Ridley Foodservice has been provided by the respective product manufacturer. Whilst we use reasonable endeavours to check this information and ensure its accuracy, we do not give any warranty (whether express or implied), guarantee or representation that it is true, accurate or complete in any respect.

As product information, ingredients, nutritional guides and dietary or allergy advice may change from time to time, we recommend that you always carefully read the product label prior to using or consuming any such products. You should not solely rely upon the information we provide and make your own assessment as to the suitability or otherwise of any given product.



03360

Gluten Free Pure Oaty Maple & Banana Granola

Gluten Free Maple And Banana Oat Granola

PRODUCT DESCRIPTION

Gluten Free Maple and Banana Oat Granola

Brand	Glebe Farm Foods Ltd
Manufacturer Product Code	40124
Effective Date	Feb 29, 2024
Product Type	Food
Product Category	Breakfast Cereal
Storage Type	Ambient
Erudus ID	d9e0b11d51954fc8ad091d1d97a5ef25
Specification Type	Cereals



Inner Component GTIN 05060084571389

Outer Case GTIN 5060084571969



INGREDIENTS

Ingredient Declaration

Gluten Free OATS (64%), Rapeseed Oil, Sugar, Water, Glucose Syrup, Sweetened Dried Banana Chips(4%)[Banana, Coconut Oil, Sugar, Natural Banana Flavour], Maple Flavouring

ALLERGENS

Product Contains:

Celery/Celery	No	Mustard	No
Cereals Containing Gluten	Yes (<20ppm)	Nuts (Tree)	No
Barley	No	Almond nuts	No
Oats	Yes (<20ppm)	Brazil nuts	No
Rye	No	Cashew nuts	No
Wheat (including Spelt and Khorasan)	No	Hazelnuts	No
Crustacea	No	Macadamia (Queensland) nuts	No
Eggs	No	Pecan nuts	No
Fish	No	Pistachio nuts	No
Lupin	No	Walnuts	No
Milk	No	Peanuts	No
Molluscs	No	Sesame Seeds	No
		Soybeans	No
		Sulphur Dioxide and Sulphites	No

Additional Allergen Information

OATS

SUPPLEMENTARY
INGREDIENT
INFORMATION

Palm Oil	No
Hydrogenated Vegetable Oil/Fat	No
GM Protein/DNA	No

ADDITIVES

Product Contains:

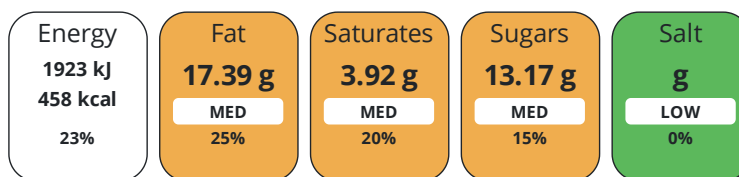
Artificial Antioxidants	No	Artificial Flavourings	No
Artificial Colours	No	Artificial Preservatives	No
Artificial Flavour Enhancers	No	Artificial Sweeteners	No

DIET
SUITABILITY

Vegan Diet	No	Vegetarian Diet	Suitable for
Halal Diet	Suitable for	Kosher Diet	Suitable for

NUTRITIONAL
INFORMATION

Each 100g/ml portion contains:



of your reference intake.

Typical values per 100g/ml : Energy 458kcal / 1923kj

Nutrient	per 100g	RI per 100g
Energy (kJ)	1923 kJ	23%
Energy (kcal)	458 kcal	23%
Fat	17.39 g	25%
of which Saturates	3.92 g	20%
of which Mono-unsaturates	6.22 g	
of which Polyunsaturates	5.86 g	
Carbohydrate	65.13 g	25%
of which Sugars	13.17 g	15%
Protein	8.86 g	18%
Salt	0 g	0%

SUPPLEMENTARY
NUTRITIONAL
INFORMATION

HFSS (HIGH IN
FAT, SALT AND
SUGAR)
HANDLING &
STORAGE
INFORMATION

HFSS Status	No
--------------------	----

Directions For Use

Serve in a bowl add some Glebe Farm drink

Storage Instructions

Ambient

Shelf Life from Time of Production	547 Days	Exempt From Shelf Life Labelling	No
Shelf Life From Opening	7 Days		



Other Accreditation

Kosher

ORIGIN

Product Country of Origin/Place of United Kingdom

Provenance

Additional Origin Details

United Kingdom

PRODUCT
CHARACTERISTICS

Standards Testing

Do you undertake trend analysis of microbiological results? No

Is shelf life testing undertaken? No

Microbiological Standards

Organism	Description	Frequency	Target	Maximum	Sample (g or ml)
E. Coli (cfu/g or ml)		Every Batch	<10	10	1000
Enterobacteriaceae (cfu/g or ml)		Every Batch	<50	50	1000
Staphylococcus Aureus (cfu/g or ml)		Every Batch	<10	10	1000
Total Viable Count (TVC) (cfu/g or ml)		Every Batch	<10	10	1000
Salmonella (cfu/g or ml)		Every Batch	<0	0	1000
Yeast (cfu/g or ml)		Every Batch	<50	50	1000
Moulds (cfu/g or ml)		Every Batch	<50	50	1000

CONFIGURATION

Case Configuration

Inner Pack Configuration

Total Quantity of Inner Components in 6 Units

Outer Case

PRODUCT
WEIGHTS

Inner Component

Variable Weight Consumer Item Yes

Inner Component Weight 325 g

Outer Case

Outer Case Gross Weight 355 kg

Outer Case Net Weight 325 kg

PRODUCT
DIMENSIONS

Inner Component

Inner Component Depth 70 mm

Inner Component Width 180 mm

Inner Component Height 255 mm

Outer Case

Outer Case Depth 70 mm

Outer Case Width 180 mm

Outer Case Height 255 mm

PALLET
INFORMATION

Quantity of Cases Per Pallet Layer 23 Cases

Pallet Height 1.7 MTR

Quantity of Layers Per Pallet 6 Layers

Quantity of Cases Per Pallet 138 Cases

PACKAGING

Inner Component Packaging

Type	Materials	Weight	Recycled Plastic %	Recyclable	Returnable	Composite
Catch Weight	Plastic	0.15 g	- %			

Outer Case Packaging

Type	Materials	Weight	Recycled Plastic %	Recyclable	Returnable	Composite
Case	Plastic	0.09 g	- %			
Case	Paper/Cardboard	104 g	- %			

Transport Packaging

Type	Materials	Weight	Recycled Plastic %	Recyclable	Returnable	Composite
Other	Wood	17 g	- %			

OTHER INFORMATION CONTACT INFORMATION

Address

Glebe Farm Foods Ltd
 Glebe Farm Foods Ltd
 Kings Ripton
 Huntingdon
 Cambs
 PE28 2DT
 United Kingdom

P: (Phone) 01487 773282

The information on the [Erudus System](#) has been supplied by the manufacturers of the products and, whilst the owners of the Erudus System take steps to ensure the information is regularly updated, they give no warranty and no guarantee that the information is accurate. Product information and ingredients may change, please always read product labels carefully in addition to using the information provided by Erudus.

We do not accept liability for any inaccuracies or incorrect information contained on this site. Please visit <http://www.erudus.com/terms-and-conditions> for full terms and conditions.