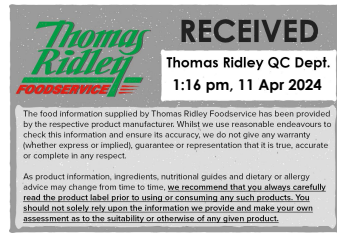


Changed Apr 09, 2024 10:48

Reviewed Apr 09, 2024 10:48

Erudus ID 763d928837c34a228f3a937934703c99

Version 3.0



03477

# VEGAN DEVIL'S FOOD CAKE

Vegan Devil's Food Cake 1x2kg

## PRODUCT DESCRIPTION

Layers for chocolate sponge filled and covered with a rich chocolate fudge icing. This pie is pre-portioned into 14 portions and packed 1 pie per outer.

<b>Brand</b>	CDT Sidoli (Welshpool) Ltd
<b>Manufacturer Product Code</b>	59322
<b>Product Type</b>	Food
<b>Product Category</b>	Desserts
<b>Storage Type</b>	Frozen
<b>Erudus ID</b>	763d928837c34a228f3a937934703c99
<b>Specification Type</b>	Bakery Products



Outer Case GTIN 5015091593220



## INGREDIENTS

### Ingredient Declaration

Fondant (sugar, dried glucose syrup), sugar, coconut milk (coconut, water), WHEAT flour (WHEAT flour, raising agents (monocalcium phosphate, sodium hydrogen carbonate), calcium, niacin, iron, thiamin), rapeseed oil, fat reduced cocoa powder (3%), cocoa powder (3%), glucose, shortening (palm oil, rapeseed oil), coffee extract, salt, raising agent (sodium bicarbonate), glucose syrup, vegetarian gelatine (gelling agents (pectin, carrageenan, locust bean gum), modified maize starch, emulsifier (lactic acid esters of mono- and diglycerides of fatty acids), dextrose, sucrose), modified maize starch, gelling agent (pectin), natural flavouring.

## ALLERGENS

Product Contains:

<b>Celery/Celery</b>	No	<b>Mustard</b>	No
<b>Cereals Containing Gluten</b>	Yes	<b>Nuts (Tree)</b>	May Contain
<b>Barley</b>	May Contain	<b>Almond nuts</b>	May Contain
<b>Oats</b>	May Contain	<b>Brazil nuts</b>	No
<b>Rye</b>	No	<b>Cashew nuts</b>	No
<b>Wheat (including Spelt and Khorasan)</b>	Yes	<b>Hazelnuts</b>	May Contain
<b>Crustacea</b>	No	<b>Macadamia (Queensland) nuts</b>	No
<b>Eggs</b>	May Contain	<b>Pecan nuts</b>	May Contain
<b>Fish</b>	No	<b>Pistachio nuts</b>	May Contain
<b>Lupin</b>	No	<b>Walnuts</b>	May Contain
<b>Milk</b>	May Contain	<b>Peanuts</b>	No
<b>Molluscs</b>	No	<b>Sesame Seeds</b>	No
		<b>Soybeans</b>	No
		<b>Sulphur Dioxide and Sulphites</b>	No

Risk Source:

### Additional Allergen Information

MADE IN A FACTORY THAT ALSO HANDLES THE FOLLOWING ALLERGENS: MILK, EGG & NUTS.

#### SUPPLEMENTARY INGREDIENT INFORMATION

<b>Palm Oil</b>	Yes
<b>Hydrogenated Vegetable Oil/Fat</b>	No
<b>GM Protein/DNA</b>	No

#### ADDITIVES

*Product Contains:*

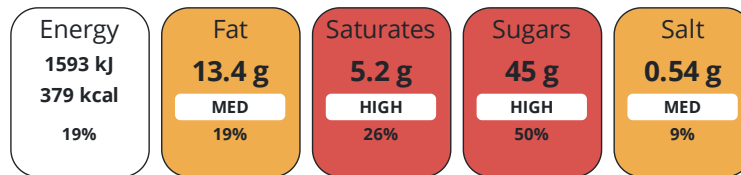
<b>Artificial Antioxidants</b>	No	<b>Artificial Flavourings</b>	No
<b>Artificial Colours</b>	No	<b>Artificial Preservatives</b>	Yes
<b>Artificial Flavour Enhancers</b>	No	<b>Artificial Sweeteners</b>	No

#### DIET SUITABILITY

<b>Vegan Diet</b>	Suitable for	<b>Vegetarian Diet</b>	Suitable for
<b>Halal Diet</b>	No	<b>Kosher Diet</b>	No

#### NUTRITIONAL INFORMATION

Each 100g/ml portion contains:



of your reference intake.

Typical values per 100g/ml : Energy 379kcal / 1593kJ

Nutrient	per 100g	RI per 100g
<b>Energy (kJ)</b>	1593 kJ	19%
<b>Energy (kcal)</b>	379 kcal	19%
<b>Fat</b>	13.4 g	19%
<b>of which Saturates</b>	5.2 g	26%
<b>Carbohydrate</b>	61 g	23%
<b>of which Sugars</b>	45 g	50%
<b>Fibre</b>	1.7 g	
<b>Protein</b>	3.1 g	6%
<b>Salt</b>	0.54 g	9%

#### SUPPLEMENTARY NUTRITIONAL INFORMATION

HFSS (HIGH IN  
FAT, SALT AND  
SUGAR)

<b>HFSS Status</b>	Yes
--------------------	-----

HANDLING &  
STORAGE  
INFORMATION

**Directions For Use**

Usage Instructions: For ambient/ chilled storage and for best results keep covered. Use within 72 hours of defrost. Do not re-freeze, once defrosted. Defrosting Instructions: Remove all packaging. Chilled Whole: Remove all packaging, place on a serving platter, cover and defrost under refrigeration for approximately 8 hours. Portion: Remove a portion from frozen place on a plate cover and defrost under refrigeration for approximately 2 hours. Ambient Whole: Remove all packaging, place on a serving platter, cover and defrost for approximately 6 hours. Portion: Remove a portion from frozen place on a plate cover and defrost for approximately 1 hours.

**Storage Instructions**

At or below minus 18°C (0°F)

<b>Shelf Life from Time of Production</b>	365 Days	<b>Exempt From Shelf Life Labelling</b>	Yes
<b>Shelf Life From Opening</b>	3 Days		

ACCREDITATIONS/  
CERTIFICATIONS/  
ASSURANCE  
SCHEMES  
ORIGIN

<b>BRCGS Certified</b>		<b>Other Accreditation</b>	
<b>Product Country of Origin/Place of Provenance</b>	United Kingdom		
<b>Additional Origin Details</b>	N/A		

PRODUCT  
CHARACTERISTICS

Standards Testing			
<b>Do you undertake trend analysis of microbiological results?</b>	Yes	<b>Is shelf life testing undertaken?</b>	No

CONFIGURATION

Case Configuration		Inner Pack Configuration	
<b>Total Quantity of Inner Components in Outer Case</b>	1 Units		
<b>Is the Outer Case Splittable?</b>	No		

PRODUCT  
WEIGHTS

Inner Component			
<b>Variable Weight Consumer Item</b>	No		
<b>Inner Component Weight</b>	2 kg		
Outer Case			
<b>Outer Case Gross Weight</b>	2.6 kg		
<b>Outer Case Net Weight</b>	2 kg		

PRODUCT  
DIMENSIONS

Inner Component			
<b>Inner Component Depth</b>	235 mm		
<b>Inner Component Width</b>	235 mm		
<b>Inner Component Height</b>	90 mm		
Outer Case			
<b>Outer Case Depth</b>	246 mm		
<b>Outer Case Width</b>	246 mm		
<b>Outer Case Height</b>	100 mm		

PALLET  
INFORMATION

<b>Quantity of Cases Per Pallet Layer</b>	20 Cases	<b>Pallet Height</b>	1.2 MTR
<b>Quantity of Layers Per Pallet</b>	12 Layers	<b>Pallet Gross Weight</b>	504 kg
<b>Quantity of Cases Per Pallet</b>	240 Cases		

PACKAGING

Inner Component Packaging						
Type	Materials	Weight	Recycled Plastic %	Recyclable	Returnable	Composite
Box	Paper/Cardboard	47.49 g	- %			

## Outer Case Packaging

Type	Materials	Weight	Recycled Plastic %	Recyclable	Returnable	Composite
Case	Paper/Cardboard	132 g	- %	Yes	No	Yes

## OTHER INFORMATION

**Intrastat/Taric Code** 19059070

**Manufacturer Comments**

Revision No: 05

## CONTACT INFORMATION

**Address**

CDT Sidoli (Welshpool) Ltd  
Henfaes Lane  
Welshpool  
Powys  
SY21 7BE  
Wales

P: (Phone) 01938 555234

**Complaints Contact**

Hera Gottschalk  
Customers Service  
customer\_service@sidoli.co.uk

P: (Phone) 01935 555234

**Technical Contact**

Michele Fischetti  
Technical Manager  
mfischetti@sidoli.co.uk

P: (Phone) 01938 555234

**Commercial Contact**

Lorna Gries  
Sales Manager  
lgries@sidoli.co.uk

P: (Phone) 01938 555234

The information on the [Erudus System](#) has been supplied by the manufacturers of the products and, whilst the owners of the Erudus System take steps to ensure the information is regularly updated, they give no warranty and no guarantee that the information is accurate. Product information and ingredients may change, please always read product labels carefully in addition to using the information provided by Erudus.

We do not accept liability for any inaccuracies or incorrect information contained on this site.  
Please visit <http://www.erudus.com/terms-and-conditions> for full terms and conditions.