


Changed Jul 02, 2024 15:01

Reviewed Jul 02, 2024 15:01

Erudus ID a03867b7d838489fb6c0348e5a7dfa9a

Version 2.0




RECEIVED

Thomas Ridley QC Dept.
3:51 pm, 3 Jul 2024

The food information supplied by Thomas Ridley Foodservice has been provided by the respective product manufacturers. Whilst we use reasonable endeavours to check this information and ensure its accuracy, we do not give any warranty (whether express or implied), guarantee or representation that it is true, accurate or complete in any respect.

As product information, ingredients, nutritional guides and dietary or allergy advice may change from time to time, we recommend that you always carefully read the product label prior to using or consuming any such products. You should not solely rely upon the information we provide and make your own assessment as to the suitability or otherwise of any given product.



03480

Love Chocolate Dessert 4x100g

Love Chocolate Dessert

PRODUCT DESCRIPTION

A delightful chocolate flavoured yogurt dessert. An ideal after dinner treat.

Brand	Central Supplies
Manufacturer Product Code	YOEMLOVCD100G
Product Type	Food
Product Category	Desserts
Storage Type	Ambient
Erudus ID	a03867b7d838489fb6c0348e5a7dfa9a
Specification Type	Generic
Inner Component GTIN	4002971421507
Outer Case GTIN	4002971421521



INGREDIENTS

Ingredient Declaration

Skimmed MILK, WHEY product, glucose-fructose syrup, sugar, CREAM, modified starch. Chocolate 1.2%, (sugar, cocoa powder, cocoa butter), lowfat cacao powder 1.2%, thickener (carrageenan), flavouring.

ALLERGENS

Product Contains:

Celery/Celериac	No	Mustard	No
Cereals Containing Gluten	No	Nuts (Tree)	No
Barley	No	Almond nuts	No
Oats	No	Brazil nuts	No
Rye	No	Cashew nuts	No
Wheat (including Spelt and Khorasan)	No	Hazelnuts	No
Crustacea	No	Macadamia (Queensland) nuts	No
Eggs	No	Pecan nuts	No
Fish	No	Pistachio nuts	No
Lupin	No	Walnuts	No
Milk	Yes	Peanuts	No
Molluscs	No	Sesame Seeds	No
		Soybeans	No
		Sulphur Dioxide and Sulphites	No

SUPPLEMENTARY INGREDIENT INFORMATION

Palm Oil	No
Hydrogenated Vegetable Oil/Fat	No
GM Protein/DNA	No

ADDITIVES

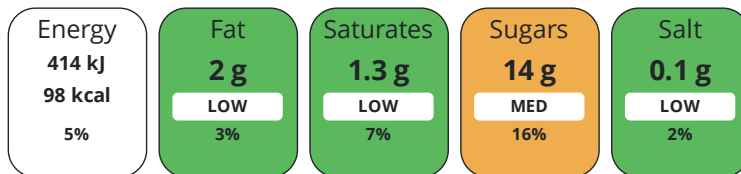
Product Contains:

Artificial Antioxidants	No	Artificial Flavourings	No
Artificial Colours	No	Artificial Preservatives	No
Artificial Flavour Enhancers	No	Artificial Sweeteners	No
Vegan Diet	No	Vegetarian Diet	Suitable for
Halal Diet	No	Kosher Diet	No

DIET SUITABILITY

NUTRITIONAL INFORMATION

Each 100g/ml portion contains:



of your reference intake.

Typical values per 100g/ml : Energy 98kcal / 414kj

Nutrient	per 100g	RI per 100g
Energy (kJ)	414 kJ	5%
Energy (kcal)	98 kcal	5%
Fat	2 g	3%
of which Saturates	1.3 g	7%
Carbohydrate	17 g	7%
of which Sugars	14 g	16%
Protein	2.7 g	5%
Salt	0.1 g	2%

SUPPLEMENTARY NUTRITIONAL INFORMATION

HANDLING & STORAGE INFORMATION

Directions For Use

Needs no refrigeration.

Storage Instructions

Needs no refrigeration.

Shelf Life from Time of Production 60 Days

ACCREDITATIONS/ CERTIFICATIONS/ ASSURANCE SCHEMES ORIGIN

IFS Food Standard

Product Country of Origin/Place of Germany

Provenance

Standards Testing

PRODUCT CHARACTERISTICS

Do you undertake trend analysis of microbiological results? No

Is shelf life testing undertaken? No

CONFIGURATION

Case Configuration

Inner Pack Configuration

Total Quantity of Inner Components in 6 Units

Outer Case

PRODUCT WEIGHTS

Inner Component	
Variable Weight Consumer Item	Yes
Outer Case	
Outer Case Gross Weight	0.11 kg
Outer Case Net Weight	0.1 kg

PRODUCT DIMENSIONS

Inner Component	
Inner Component Depth	125 mm
Inner Component Width	125 mm
Inner Component Height	65 mm
Outer Case	
Outer Case Depth	400 mm
Outer Case Width	260 mm
Outer Case Height	70 mm

PALLET INFORMATION

Non Palletised	Yes
-----------------------	-----

PACKAGING

Inner Component Packaging							
Type	Materials	Weight	Recycled Plastic %	Recyclable	Returnable	Composite	
Pot	Plastic	8 g	- %				
Outer Case Packaging							
Type	Materials	Weight	Recycled Plastic %	Recyclable	Returnable	Composite	
Bag	Paper/Cardboard	30 g	- %				

OTHER INFORMATION CONTACT INFORMATION

Address
 Central Supplies
 2 Brook Park, Saltbrook Rd
 Cradley
 Halesowen
 West Midlands
 B63 2QU
 England

P: (Phone) 01384 414999

The information on the [Erudus System](#) has been supplied by the manufacturers of the products and, whilst the owners of the Erudus System take steps to ensure the information is regularly updated, they give no warranty and no guarantee that the information is accurate. Product information and ingredients may change, please always read product labels carefully in addition to using the information provided by Erudus.

We do not accept liability for any inaccuracies or incorrect information contained on this site.
 Please visit <http://www.erudus.com/terms-and-conditions> for full terms and conditions.