

Changed May 07, 2024 14:15  
Reviewed May 07, 2024 14:15  
Erudus ID 0460b4541cb34aa5b03173bf04ee8d7c  
Version 2.0

**Thomas Ridley**  
FOODSERVICE

**RECEIVED**  
Thomas Ridley QC Dept.  
2:22 pm, 8 May 2024

The food information supplied by Thomas Ridley Foodservice has been provided by the respective product manufacturers. Whilst we use reasonable endeavours to check this information and ensure its accuracy, we do not give any warranty (whether express or implied), guarantee or representation that it is true, accurate or complete in any respect.

As product information, ingredients, nutritional guides and dietary or allergy advice may change from time to time, we recommend that you always carefully read the product label prior to using or consuming any such products. You should not solely rely upon the information we provide and make your own assessment as to the suitability or otherwise of any given product.



03541

# APRICOT, ORANGE & ALMOND SLICE (1 x 15ptn)

Apricot, Orange & Almond Slice 1x1026g

## PRODUCT DESCRIPTION

A shortcake base, layered with apricot jam filling and topped with an orange and almond sponge, finished with flaked apricots and oats

<b>Brand</b>	The Handmade Cake Co.
<b>Manufacturer Product Code</b>	077975
<b>Product Type</b>	Food
<b>Product Category</b>	Cakes and Tarts
<b>Storage Type</b>	Frozen
<b>Erudus ID</b>	0460b4541cb34aa5b03173bf04ee8d7c
<b>Specification Type</b>	Bakery Products



**Outer Case GTIN** 5060044077975



## INGREDIENTS

### Ingredient Declaration

WHEAT Flour (with Calcium Carbonate, Niacin, Iron, Thiamin), Apricot Jam (19%) [Glucose-Fructose Syrup, Apricot Puree, Acidity Regulators (Citric Acid, Trisodium Citrate), Gelling Agent (Pectin)], Vegetable Margarine [Palm Oil, Rapeseed Oil, Water, Salt, Emulsifier (E471), Natural Flavouring], Sugar, Cornflour, Water, Rapeseed Oil, Candied Peel (2.7%) [Orange Peel, Glucose-Fructose Syrup, Sugar, Lemon Peel, Acidity Regulator (Citric Acid)], Ground ALMONDS (2.2%), Flaked ALMONDS (1.0%), OATS, Humectant (Vegetable Glycerine), Modified Maize Starch, Raising Agents (E450, E501), Pasteurised Lemon Juice, Orange Extract, Natural Flavourings.

## ALLERGENS

Product Contains:

<b>Celery/Celeriac</b>	No
<b>Cereals Containing Gluten</b>	Yes
<b>Barley</b>	No
<b>Oats</b>	Yes
<b>Rye</b>	No
<b>Wheat (including Spelt and Khorasan)</b>	Yes
<b>Crustacea</b>	No
<b>Eggs</b>	May Contain
<b>Fish</b>	No
<b>Lupin</b>	No
<b>Milk</b>	May Contain
<b>Molluscs</b>	No
<b>Mustard</b>	No
<b>Nuts (Tree)</b>	Yes
<b>Almond nuts</b>	Yes
<b>Brazil nuts</b>	May Contain
<b>Cashew nuts</b>	May Contain
<b>Hazelnuts</b>	May Contain
<b>Macadamia (Queensland) nuts</b>	May Contain
<b>Pecan nuts</b>	May Contain
<b>Pistachio nuts</b>	May Contain
<b>Walnuts</b>	May Contain
<b>Peanuts</b>	No
<b>Sesame Seeds</b>	No
<b>Soybeans</b>	No
<b>Sulphur Dioxide and Sulphites</b>	No

Risk Source:

#### Additional Allergen Information

Allergy Advice: For allergens and cereals containing gluten please see ingredients in BOLD. This product may contain traces of milk and eggs as it has been made in a bakery that uses these ingredients.

#### SUPPLEMENTARY INGREDIENT INFORMATION

<b>Palm Oil</b>	Yes
<b>Hydrogenated Vegetable Oil/Fat</b>	No
<b>GM Protein/DNA</b>	No

#### ADDITIVES

Product Contains:

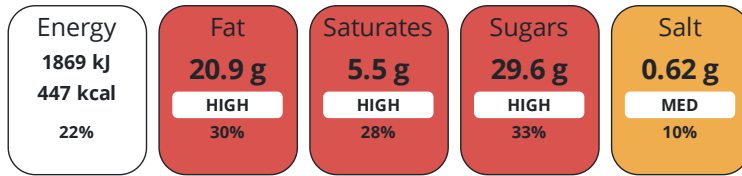
<b>Artificial Antioxidants</b>	No
<b>Artificial Colours</b>	No
<b>Artificial Flavour Enhancers</b>	No
<b>Artificial Flavourings</b>	No
<b>Artificial Preservatives</b>	No
<b>Artificial Sweeteners</b>	No

#### DIET SUITABILITY

<b>Vegan Diet</b>	Suitable for	<b>Vegetarian Diet</b>	Suitable for
<b>Halal Diet</b>	No	<b>Kosher Diet</b>	No

#### NUTRITIONAL INFORMATION

Each 100g/ml portion contains:



of your reference intake.

Typical values per 100g/ml : Energy 447kcal / 1869kJ

Nutrient	per 100g	RI per 100g	per 70g serving	RI per 70g serving
Energy (kJ)	1869 kJ	22%	1308.3 kJ	16%
Energy (kcal)	447 kcal	22%	312.9 kcal	16%
Fat	20.9 g	30%	14.6 g	21%
of which Saturates	5.5 g	28%	3.9 g	20%
Carbohydrate	59.6 g	23%	41.7 g	16%
of which Sugars	29.6 g	33%	20.7 g	23%
Fibre	1.5 g		1.1 g	
Protein	4.4 g	9%	3.1 g	6%
Salt	0.62 g	10%	0.4 g	7%
Serving Size			70 g	

#### SUPPLEMENTARY NUTRITIONAL INFORMATION

HFSS (HIGH IN FAT, SALT AND SUGAR)

HFSS Status Yes

#### HANDLING & STORAGE INFORMATION

##### Directions For Use

• Remove film and defrost at room temperature for 2 hours. • Please re-cut around the portions before removing from the tray. • Once defrosted store in a cool place, in an airtight container. • Do not refreeze once defrosted. • Consume within 5 days.

##### Storage Instructions

Keep Frozen - Store at -18C

Shelf Life from Time of Production 365 Days

Exempt From Shelf Life Labelling No

#### ACCREDITATIONS/ CERTIFICATIONS/ ASSURANCE SCHEMES

BRCGS Certified Roundtable of Sustainable Palm Oil (RSPO)

#### ORIGIN

Product Country of Origin/Place of United Kingdom

#### Provenance

#### PRODUCT CHARACTERISTICS

Standards Testing

Do you undertake trend analysis of microbiological results? Yes

Is shelf life testing undertaken? Yes

#### Microbiological Standards

Organism	Description	Frequency	Target	Maximum	Sample (g or ml)
Enterobacteriaceae (cfu/g or ml)		Annually	<100	10000	1
Salmonella (cfu/g or ml)	Detected/not detected in 25g	Annually	=0	0	25
Staphylococcus Aureus (cfu/g or ml)		Annually	<20	100	1

## Physical Standards

Test	Description	Frequency	Target	Range	Sample (g or ml)
Dimensions Height (mm)	3 per batch	Every Batch	>17	17 to 35	1050
Weight (g)	3 per batch, including foil tray	Every Batch	>1050	1050 to 1250	1050

## CONFIGURATION

## Case Configuration

<b>Total Quantity of Inner Components in Outer Case</b>	1 Units
<b>Is the Outer Case Splittable?</b>	No
Inner Pack Configuration	

## PRODUCT WEIGHTS

## Inner Component

<b>Variable Weight Consumer Item</b>	No
<b>Inner Component Weight</b>	1026 g

## Outer Case

<b>Outer Case Gross Weight</b>	1.16 kg
<b>Outer Case Net Weight</b>	1.05 kg

## PRODUCT DIMENSIONS

## Inner Component

<b>Inner Component Depth</b>	320 mm
<b>Inner Component Width</b>	200 mm
<b>Inner Component Height</b>	17 mm

## Outer Case

<b>Outer Case Depth</b>	322 mm
<b>Outer Case Width</b>	203 mm
<b>Outer Case Height</b>	40 mm

## PALLET INFORMATION

<b>Quantity of Cases Per Pallet Layer</b>	16 Cases
<b>Quantity of Layers Per Pallet</b>	20 Layers
<b>Quantity of Cases Per Pallet</b>	320 Cases
<b>Pallet Height</b>	1 MTR

## PACKAGING

## Inner Component Packaging

Type	Materials	Weight	Recycled Plastic %	Recyclable	Returnable	Composite
Tray	Plastic	2 g	- %			
Tray	Aluminium	24 g	- %			

## Outer Case Packaging

Type	Materials	Weight	Recycled Plastic %	Recyclable	Returnable	Composite
Case	Paper/Cardboard	82 g	- %			

## Transport Packaging

Type	Materials	Weight	Recycled Plastic %	Recyclable	Returnable	Composite
Other	Plastic	0.94 g	- %			
Other	Paper/Cardboard	0.94 g	- %			
Other	Wood	78.1 g	- %			

OTHER INFORMATION

**Intrastat/Taric Code**

1905907000

**Commodity Code**

19059070

**Manufacturer Comments**

Transit packaging is given per case on a full-pallet basis

CONTACT INFORMATION

Address

The Handmade Cake Co.

The Bakery

Gardner Road

Maidenhead

Berkshire

SL6 7TU

United Kingdom

P: (Phone) 01628 770908

Technical Contact

Technical Team

Maidenhead.Technical@mdesserts.com

P: (Phone) 01628 770908 Ext. 1052

Complaints Contact

Technical Team

Maidenhead.Technical@mdesserts.com

P: (Phone) 01628 770908 Ext. 1052

The information on the [Erudus System](#) has been supplied by the manufacturers of the products and, whilst the owners of the Erudus System take steps to ensure the information is regularly updated, they give no warranty and no guarantee that the information is accurate. Product information and ingredients may change, please always read product labels carefully in addition to using the information provided by Erudus.

We do not accept liability for any inaccuracies or incorrect information contained on this site.  
Please visit <http://www.erudus.com/terms-and-conditions> for full terms and conditions.