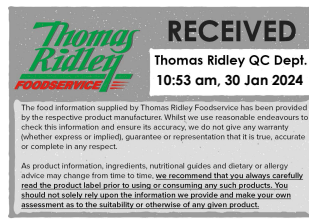


Changed Jan 30, 2024 10:46

Reviewed Jan 30, 2024 10:46

Erudus ID 5857d712ad8446b29a1aa2e1a0769c4c

Version 5.1



Quaker Oat So Simple Original Porridge Pot 45g x 8

Quaker Oat So Simple Original Porridge Pot 45g 8x45g

PRODUCT DESCRIPTION

Original Hot Oat Cereal

Brand	Walkers Snacks Limited (PepsiCo)
Manufacturer Product Code	300000651
Product Type	Food
Product Category	Grains
Storage Type	Ambient
Erudus ID	5857d712ad8446b29a1aa2e1a0769c4c
Specification Type	Cereals



Inner Component GTIN	05000108703174
Outer Case GTIN	05000108703181



INGREDIENTS

Ingredient Declaration

Quaker Rolled **Oats** (77%), Skimmed **Milk** Powder, Anticaking Agent (Calcium Phosphate)

ALLERGENS

Product Contains:

Celery/Celeriac	No	Mustard	No
Cereals Containing Gluten	Yes	Nuts (Tree)	No
Barley	May Contain	Almond nuts	No
Oats	Yes	Brazil nuts	No
Rye	No	Cashew nuts	No
Wheat (including Spelt and Khorasan)	May Contain	Hazelnuts	No
Crustacea	No	Macadamia (Queensland) nuts	No
Eggs	No	Pecan nuts	No
Fish	No	Pistachio nuts	No
Lupin	No	Walnuts	No
Milk	Yes	Peanuts	No
Molluscs	No	Sesame Seeds	No
		Soybeans	May Contain
		Sulphur Dioxide and Sulphites	No

Risk Source:

Allergen Statement On Pack

For allergens, see ingredients in bold.

Additional Allergen Information

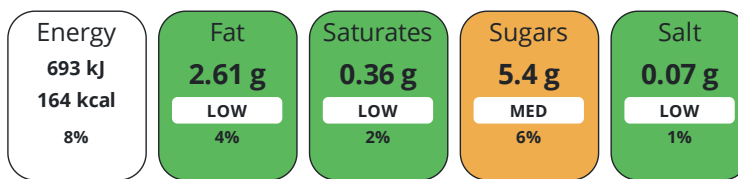
May contain Wheat, barley, soya.

SUPPLEMENTARY
INGREDIENT
INFORMATION
ADDITIVES

GM Protein/DNA No

Product Contains:

Each 45g/ml serving contains:



of your reference intake.

Typical values per 45g/ml : Energy 164kcal / 693kj

Nutrient	per 100g	RI per 100g	per 45g serving	RI per 45g serving
Energy (kJ)	1540 kJ	18%	693 kJ	8%
Energy (kcal)	365 kcal	18%	164.3 kcal	8%
Fat	5.8 g	8%	2.6 g	4%
of which Saturates	0.8 g	4%	0.4 g	2%
Carbohydrate	57 g	22%	25.7 g	10%
of which Sugars	12 g	13%	5.4 g	6%
Fibre	7 g		3.2 g	
Protein	17 g	34%	7.7 g	15%
Salt	0.15 g	3%	0.1 g	2%

Serving Size	45 g
Serving Size Description	This pack contains 1 serving
Number of Servings	1 Servings

Source of Nutritional Information Manufacturers analysis

VITAMINS AND
MINERALS

Nutrient	per 100g	RI per 100g	per 45g serving	RI per 45g serving
Manganese	2.5 mg	125%	1.1 mg	55%

SUPPLEMENTARY
NUTRITIONAL
INFORMATION

HFSS (HIGH IN
FAT, SALT AND
SUGAR)
HANDLING &
STORAGE
INFORMATION

HFSS Status No

Directions For Use

This pack contains 1 serving

Storage Instructions

For best before, see base of pot. Store in a cool dry place.

Shelf Life from Time of Production 189 Days **Exempt From Shelf Life Labelling** No

ORIGIN

Product Country of Origin/Place of United Kingdom

Provenance

Standards Testing

PRODUCT
CHARACTERISTICS

CONFIGURATION

Case Configuration

Inner Pack Configuration

Variable Inner Components in Outer Case	No
Total Quantity of Inner Components in Outer Case	8 Units
Is the Outer Case Splittable?	No

PRODUCT WEIGHTS

Inner Component	
Variable Weight Consumer Item	No
Inner Component Weight	45 g
Outer Case	
Outer Case Gross Weight	0.58 kg
Outer Case Net Weight	0.36 kg

PRODUCT DIMENSIONS

Inner Component	
Inner Component Depth	98 mm
Inner Component Width	98 mm
Inner Component Height	94 mm
Outer Case	
Outer Case Depth	201 mm
Outer Case Width	201 mm
Outer Case Height	185 mm

PALLET INFORMATION

Quantity of Cases Per Pallet Layer	30 Cases	Pallet Height	1.3 MTR
Quantity of Layers Per Pallet	7 Layers	Pallet Gross Weight	126.38 kg
Quantity of Cases Per Pallet	210 Cases		

OTHER INFORMATION CONTACT INFORMATION

Address
 Walkers Snacks Limited (PepsiCo)
 450 South Oak Way
 Green Park
 Reading
 RG2 6UW
 United Kingdom

The information on the [Erudus System](#) has been supplied by the manufacturers of the products and, whilst the owners of the Erudus System take steps to ensure the information is regularly updated, they give no warranty and no guarantee that the information is accurate. Product information and ingredients may change, please always read product labels carefully in addition to using the information provided by Erudus.

We do not accept liability for any inaccuracies or incorrect information contained on this site. Please visit <http://www.erudus.com/terms-and-conditions> for full terms and conditions.