

Changed Nov 29, 2021 11:49

Erudus ID 9edb0bd797b04fa79d28ded1a9615f1b

Version 1.0

03604

# Eat Natural Protein Packed with Peanuts and Chocolate (PRO) 12 x 45g

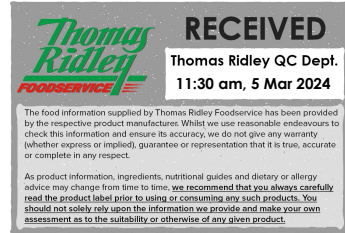
Protein Packed Peanuts And Chocolate 12x

## PRODUCT DESCRIPTION

12 bars of peanuts and coconut with chocolate chunks and soya crispies.

Brand	Ferrero UK Ltd
Manufacturer Product Code	252121
Product Type	Food
Product Category	Nuts and Seeds
Storage Type	Ambient
Erudus ID	9edb0bd797b04fa79d28ded1a9615f1b
Specification Type	Legacy

Inner Component GTIN	96103890
Outer Case GTIN	5013803991951



## INGREDIENTS

### Ingredient Declaration

**PEANUTS** 45%, glucose syrup, dark chocolate 11% (cocoa mass, sugar, dextrose, emulsifier: **SOYA** lecithin), **SOYA** protein crispies 8% (**SOYA** protein isolate, tapioca starch, salt), shredded coconut 7%, honey 7%, crisped rice (rice, sugar), cocoa powder, salt.

## ALLERGENS

Product Contains:

<b>Celery/Celeriac</b>	No	<b>Mustard</b>	No
<b>Cereals Containing Gluten</b>	No	<b>Nuts (Tree)</b>	May Contain
<b>Barley</b>	No	<b>Almond nuts</b>	May Contain
<b>Oats</b>	No	<b>Brazil nuts</b>	No
<b>Rye</b>	No	<b>Cashew nuts</b>	May Contain
<b>Wheat (including Spelt and Khorasan)</b>	No	<b>Hazelnuts</b>	May Contain
<b>Crustacea</b>	No	<b>Macadamia (Queensland) nuts</b>	May Contain
<b>Eggs</b>	No	<b>Pecan nuts</b>	May Contain
<b>Fish</b>	No	<b>Pistachio nuts</b>	No
<b>Lupin</b>	No	<b>Walnuts</b>	May Contain
<b>Milk</b>	May Contain	<b>Peanuts</b>	Yes
<b>Molluscs</b>	No	<b>Sesame Seeds</b>	May Contain
		<b>Soybeans</b>	Yes
		<b>Sulphur Dioxide and Sulphites</b>	No

Risk Source:

### Additional Allergen Information

For allergens, see ingredients in BOLD CAPITALS. May also contain: Nuts, sesame seeds and cow's milk.

## SUPPLEMENTARY INGREDIENT INFORMATION ADDITIVES

<b>GM Protein/DNA</b>	No
-----------------------	----

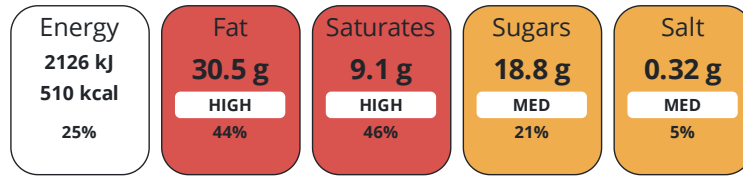
Product Contains:

DIET  
SUITABILITY

<b>Suitable for Coeliacs</b>	No	<b>Halal Diet</b>	No
<b>Kosher Diet</b>	No	<b>Vegetarian Diet</b>	Suitable for
<b>Vegan Diet</b>	No		

NUTRITIONAL  
INFORMATION

Each 100g/ml portion contains:



of your reference intake.

Typical values per 100g/ml : Energy 510kcal / 2126kJ

Nutrient	per 100g/ml	RI per 100g/ml	per 45g/ml serving	RI per 45g/ml serving
<b>Energy (kJ)</b>	2126 kJ	25%	956.7 kJ	11%
<b>Energy (kcal)</b>	510 kcal	26%	229.5 kcal	11%
<b>Fat</b>	30.5 g	44%	13.7 g	20%
<b>of which Saturates</b>	9.1 g	46%	4.1 g	21%
<b>Carbohydrate</b>	32.4 g	12%	14.6 g	6%
<b>of which Sugars</b>	18.8 g	21%	8.5 g	9%
<b>Fibre</b>	7.3 g		3.3 g	
<b>Protein</b>	22.8 g	46%	10.3 g	21%
<b>Salt</b>	0.32 g	5%	0.1 g	2%
<b>Serving Size</b>	45 g			

SUPPLEMENTARY  
NUTRITIONAL  
INFORMATION

HANDLING &  
STORAGE  
INFORMATION

**Directions For Use**

For allergens, see ingredients in BOLD CAPITALS.

**Storage Instructions**

Store in a cool dry place.

**Shelf Life from Time of Production** 273 Days

ORIGIN

**Product Country of Origin/Place of** United Kingdom

**Provenance**

PRODUCT  
CHARACTERISTICS

Standards Testing

**Do you undertake trend analysis of microbiological results?** No

**Is shelf life testing undertaken?** No

CONFIGURATION

Case Configuration

Inner Pack Configuration

**Total Quantity of Inner Components in Outer Case** 12 Units

PRODUCT WEIGHTS

Inner Component	
<b>Variable Weight Consumer Item</b>	No
<b>Weight/Volume</b>	
12 x 45g	
Outer Case	
<b>Outer Case Gross Weight</b>	0.59 kg
<b>Outer Case Net Weight</b>	0.54 kg

PRODUCT DIMENSIONS

Inner Component	
<b>Inner Component Depth</b>	140 mm
<b>Inner Component Width</b>	40 mm
<b>Inner Component Height</b>	20 mm
Outer Case	
<b>Outer Case Depth</b>	185 mm
<b>Outer Case Width</b>	140 mm
<b>Outer Case Height</b>	75 mm

PALLET INFORMATION

<b>Quantity of Cases Per Pallet Layer</b>	108 Cases	<b>Pallet Height</b>	2.16 MTR
<b>Quantity of Layers Per Pallet</b>	5 Layers		
<b>Quantity of Cases Per Pallet</b>	540 Cases		

PACKAGING

Outer Case Packaging						
Type	Materials	Weight	Recycled Plastic %	Recyclable	Returnable	Composite
Case	Paper/Cardboard	54 g	- %			

OTHER INFORMATION CONTACT INFORMATION

Address  
 Ferrero UK Ltd  
 889 Greenford Rd  
 Greenford  
 UB6 0HE  
 England

P: (Phone) 07927565564

The information on the [Erudus System](#) has been supplied by the manufacturers of the products and, whilst the owners of the Erudus System take steps to ensure the information is regularly updated, they give no warranty and no guarantee that the information is accurate. Product information and ingredients may change, please always read product labels carefully in addition to using the information provided by Erudus.

We do not accept liability for any inaccuracies or incorrect information contained on this site. Please visit <http://www.erudus.com/terms-and-conditions> for full terms and conditions.