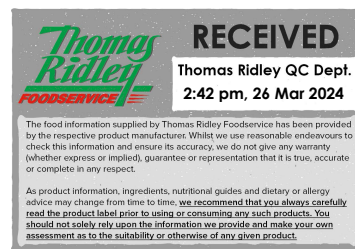


Changed Mar 26, 2024 13:29

Reviewed Mar 26, 2024 13:29

Erudus ID d5099303e39e4eb999185fa925a812a1

Version 3.0



Thomas Ridley
FOODSERVICE

RECEIVED
Thomas Ridley QC Dept.
2:42 pm, 26 Mar 2024

The food information supplied by Thomas Ridley Foodservice has been provided by the respective product manufacturer. Whilst we use reasonable endeavours to check this information and ensure its accuracy, we do not give any warranty (whether express or implied), guarantee or representation that it is true, accurate or complete in any respect.

As product information, ingredients, nutritional guides and dietary or allergy advice may change from time to time, we recommend that you always carefully read the product label prior to using or consuming any such products. You should not solely rely upon the information we provide and make your own assessment as to the suitability or otherwise of any given product.



03670

Beef Glace 600g

Beef Glace 4x600g

PRODUCT DESCRIPTION

A composite paste, produced by the blending of food ingredients. A very dark brown coloured reasonably viscous paste, with a distinctive odour of beef. It has the characteristic appearance and flavour of Beef Glace when reconstituted with water as directed.

Brand	Essential Cuisine Limited
Manufacturer Product Code	SW00051 – ECBGL/4
Manufacturer Version Number	2
Effective Date	Feb 29, 2024
Product Type	Food
Product Category	Gravy / Bouillon
Storage Type	Ambient
Erudus ID	d5099303e39e4eb999185fa925a812a1
Specification Type	Generic
Inner Component GTIN	5029540000375
Outer Case GTIN	05029540000382



INGREDIENTS

Ingredient Declaration

Ingredients when reconstituted:

Beef Stock (Water, Beef Stock), Flavourings, Glucose Syrup, Yeast Extracts, Salt, Sugar, Maltodextrin, Onion Juice.

ALLERGENS

Product Contains:

Celery/Celery	No	Mustard	No
Cereals Containing Gluten	No	Nuts (Tree)	No
Barley	No	Almond nuts	No
Oats	No	Brazil nuts	No
Rye	No	Cashew nuts	No
Wheat (including Spelt and Khorasan)	No	Hazelnuts	No
Crustacea	No	Macadamia (Queensland) nuts	No
Eggs	No	Pecan nuts	No
Fish	No	Pistachio nuts	No
Lupin	No	Walnuts	No
Milk	No	Peanuts	No
Molluscs	No	Sesame Seeds	No
		Soybeans	No
		Sulphur Dioxide and Sulphites	No

FREE FROM CLAIMS

Gluten-Free	Yes
--------------------	-----

SUPPLEMENTARY
INGREDIENT
INFORMATION

Palm Oil	No
Hydrogenated Vegetable Oil/Fat	No
GM Protein/DNA	No

ADDITIVES

Product Contains:

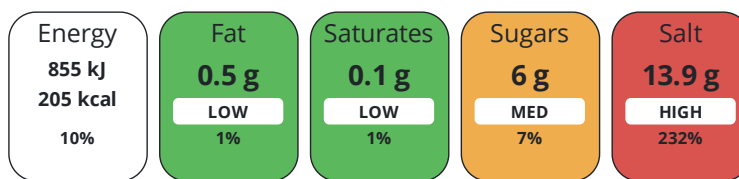
Artificial Antioxidants	No	Artificial Flavourings	Yes
Artificial Colours	No	Artificial Preservatives	No
Artificial Flavour Enhancers	No	Artificial Sweeteners	No

DIET
SUITABILITY

Vegan Diet	No	Vegetarian Diet	No
Halal Diet	No	Kosher Diet	No

NUTRITIONAL
INFORMATION

Each 100g/ml portion contains:



of your reference intake.

Typical values per 100g/ml : Energy 205kcal / 855kj

Nutrient	per 100g	RI per 100g
Energy (kJ)	855 kJ	10%
Energy (kcal)	205 kcal	10%
Fat	0.5 g	1%
of which Saturates	< 0.1 g	1%
Carbohydrate	28 g	11%
of which Sugars	6 g	7%
Fibre	1 g	
Protein	21 g	42%
Salt	13.9 g	232%
Sodium	5500 mg	

Source of Nutritional Information Calculation based on known values of ingredients

SUPPLEMENTARY
NUTRITIONAL
INFORMATION

HFSS (HIGH IN
FAT, SALT AND
SUGAR)
HANDLING &
STORAGE
INFORMATION

HFSS Status Not Applicable (out of scope, exempt)

Directions For Use

For stock use 25g per litre. To make one litre of stock, simply whisk 25g of the product into one litre of warm water in a suitable saucepan. Bring to the boil, stirring constantly.

Storage Instructions

Ambient

Storage Instructions After Opening

Refrigerate after opening. Seal lid tightly after use.

Shelf Life from Time of Production	456 Days	Exempt From Shelf Life Labelling	No
---	----------	---	----

ACCREDITATIONS/
CERTIFICATIONS/
ASSURANCE
SCHEMES
ORIGIN

BRCGS Certified

Food for Life Supplier Scheme

Other Accreditation

Product Country of Origin/Place of Other

Provenance

Additional Origin Details

Produced in the EU, packed in the UK

PRODUCT
CHARACTERISTICS
CONFIGURATION

Standards Testing

Case Configuration

Inner Pack Configuration

Total Quantity of Inner Components in 4 Units

Outer Case

Is the Outer Case Splittable? Yes

PRODUCT
WEIGHTS

Inner Component

Variable Weight Consumer Item No

Inner Component Weight 600 g

e mark Yes

Outer Case

Outer Case Gross Weight 2.7 kg

Outer Case Net Weight 2.4 kg

PRODUCT
DIMENSIONS

Inner Component

Inner Component Depth 87 mm

Inner Component Width 87 mm

Inner Component Height 105 mm

Outer Case

Outer Case Depth 175 mm

Outer Case Width 175 mm

Outer Case Height 105 mm

PALLET
INFORMATION

Quantity of Cases Per Pallet Layer 30 Cases

Pallet Height 0.9 MTR

Quantity of Layers Per Pallet 6 Layers

Pallet Gross Weight 517 kg

Quantity of Cases Per Pallet 180 Cases

PACKAGING

Inner Component Packaging

Type	Materials	Weight	Recycled Plastic %	Recyclable	Returnable	Composite
Jar	Plastic	35 g	- %			
Jar	Paper/Cardboard	2.6 g	- %			
Jar	Aluminium	1.1 g	- %			

Outer Case Packaging

Type	Materials	Weight	Recycled Plastic %	Recyclable	Returnable	Composite
Case	Paper/Cardboard	90 g	- %			

Transport Packaging

Type	Materials	Weight	Recycled Plastic %	Recyclable	Returnable	Composite
Other	Plastic	500 g	- %			
Other	Paper/Cardboard	500 g	- %			
Other	Wood	30000 g	- %			

MARKETING
INFORMATION

Marketing Description

A rich and meaty reduction, perfect for stocks and sauces.

OTHER
INFORMATION

Intrastat/Taric Code

2103

Manufacturer Comments

N/A

CONTACT
INFORMATION

Address

Essential Cuisine Limited

Essential Cuisine Ltd

Browning Way

Winsford

Cheshire

CW7 2RH

United Kingdom

P: (Phone) 01606 541490

The information on the [Erudus System](#) has been supplied by the manufacturers of the products and, whilst the owners of the Erudus System take steps to ensure the information is regularly updated, they give no warranty and no guarantee that the information is accurate. Product information and ingredients may change, please always read product labels carefully in addition to using the information provided by Erudus.

We do not accept liability for any inaccuracies or incorrect information contained on this site.
Please visit <http://www.erudus.com/terms-and-conditions> for full terms and conditions.