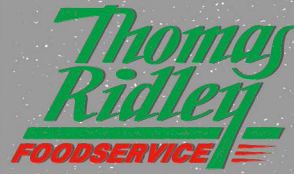


Changed Jan 03, 2025 00:00

Reviewed Jan 02, 2025 16:31

Erudus ID 87c79f1f3c724dff7303d415dfe8cb2

Version 2.0



RECEIVED

Thomas Ridley QC Dept.  
8:56, 16 Jan 2025

The food information supplied by Thomas Ridley Foodservice has been provided by the respective product manufacturer. Whilst we use reasonable endeavours to check this information and ensure its accuracy, we do not give any warranty (whether express or implied), guarantee or representation that it is true, accurate or complete in any respect.

As product information, ingredients, nutritional guides and dietary or allergy advice may change from time to time, **we recommend that you always carefully read the product label prior to using or consuming any such products. You should not solely rely upon the information we provide and make your own assessment as to the suitability or otherwise of any given product.**

# 30 x Pave aux Céréales 450g

Bread With Cereals 1x450g

## PRODUCT DESCRIPTION

FROZEN STONE OVEN PART-BAKED CEREAL LOAF 450G BRIDOR THE GOURMET BREADS

Brand	Bridor
Manufacturer Product Code	30735
Effective Date	Jan 2, 2025
Product Type	Food
Product Category	Bread - Other
Storage Type	Frozen
Erudus ID	87c79f1f3c724dff7303d415dfe8cb2
Specification Type	Bakery Products

Outer Case GTIN 3419280020689



## INGREDIENTS

### Ingredient Declaration

WHEAT flour, water, sourdough (stonemill WHEAT flour, water), sunflower seeds 2.4%, SESAME seeds 1.8%, OAT flakes 1.2%, yellow flax seeds 1.2%, salt, finish 1% (OAT flakes), RYE flour, malted BARLEY flour, WHEAT gluten, yeast, malted WHEAT flour.

## ALLERGENS

Product Contains:

Celery/Celeriac	No	Mustard	No
Cereals Containing Gluten	Yes	Nuts (Tree)	May Contain
Barley	Yes	Almond nuts	May Contain
Oats	Yes	Brazil nuts	No
Rye	Yes	Cashew nuts	May Contain
Wheat (including Spelt and Khorasan)	Yes	Hazelnuts	May Contain
Crustacea	No	Macadamia (Queensland) nuts	No
Eggs	May Contain	Pecan nuts	May Contain
Fish	No	Pistachio nuts	May Contain
Lupin	No	Walnuts	May Contain
Milk	May Contain	Peanuts	No
Molluscs	No	Sesame Seeds	Yes
		Soybeans	No
		Sulphur Dioxide and Sulphites	No

Risk Source:

### Additional Allergen Information

May contain traces of: milk, nuts, eggs.

## SUPPLEMENTARY INGREDIENT INFORMATION

Palm Oil	No
Hydrogenated Vegetable Oil/Fat	No
GM Protein/DNA	No

ADDITIVES

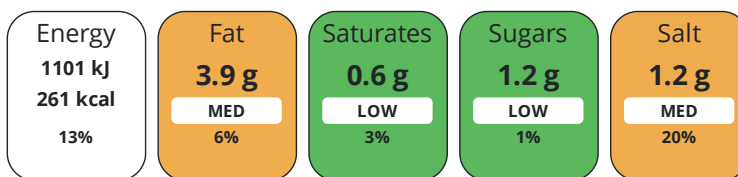
DIET SUITABILITY

NUTRITIONAL INFORMATION

Product Contains:

<b>Vegan Diet</b>	Suitable for	<b>Vegetarian Diet</b>	Suitable for
<b>Halal Diet</b>	Certified	<b>Kosher Diet</b>	No

Each 100g/ml portion contains:



of your reference intake.

Typical values per 100g/ml : Energy 261kcal / 1101kJ

Nutrient	per 100g	RI per 100g	per 30g serving	RI per 30g serving
<b>Energy (kJ)</b>	1101 kJ	13%	330.3 kJ	4%
<b>Energy (kcal)</b>	261 kcal	13%	78.3 kcal	4%
<b>Fat</b>	3.9 g	6%	1.2 g	2%
<b>of which Saturates</b>	0.6 g	3%	0.2 g	1%
<b>Carbohydrate</b>	46 g	18%	13.8 g	5%
<b>of which Sugars</b>	1.2 g	1%	0.4 g	0%
<b>Fibre</b>	4 g		1.2 g	
<b>Protein</b>	8.6 g	17%	2.6 g	5%
<b>Salt</b>	1.2 g	20%	0.4 g	7%

**Serving Size** 30 g

SUPPLEMENTARY NUTRITIONAL INFORMATION

HANDLING & STORAGE INFORMATION

**Directions For Use**

Defrosting approximately 0-10 min at room temperature Preheating oven 230°C Baking (in ventilated oven) approximately 16-18 min at 190-200°C, closed damper Cooling and rest on tray 15 min at room temperature Tray arrangement (600x400) 6 items on a tray

**Storage Instructions**

Store at -18°C or below before use. DO NOT REFREEZE ONCE THAWED.

**Shelf Life from Time of Production** 450 Days

ACCREDITATIONS/ CERTIFICATIONS/ ASSURANCE SCHEMES ORIGIN

<b>BRCGS Certified</b>	<b>BRCGS Food Safety</b>
<b>IFS Food Standard</b>	<b>Other Accreditation</b>

**Product Country of Origin/Place of** France

**Provenance**

**Additional Origin Details**

N/A

PRODUCT CHARACTERISTICS

Standards Testing

<b>Do you undertake trend analysis of microbiological results?</b>	Yes	<b>Is shelf life testing undertaken?</b>	Yes
--	-----	--	-----

## CONFIGURATION

## Case Configuration

## Inner Pack Configuration

<b>Variable Inner Components in Outer Case</b>	No
<b>Total Quantity of Inner Components in Outer Case</b>	1 Units
<b>Is the Outer Case Splittable?</b>	No

## PRODUCT WEIGHTS

Inner Component	
<b>Variable Weight Consumer Item</b>	No
<b>Inner Component Weight</b>	450 g
Outer Case	
<b>Outer Case Gross Weight</b>	14.22 kg
<b>Outer Case Net Weight</b>	13.5 kg

## PRODUCT DIMENSIONS

Inner Component	
<b>Inner Component Depth</b>	290 mm
<b>Inner Component Width</b>	100 mm
<b>Inner Component Height</b>	60 mm
Outer Case	
<b>Outer Case Depth</b>	590 mm
<b>Outer Case Width</b>	390 mm
<b>Outer Case Height</b>	305 mm

## PALLET INFORMATION

<b>Quantity of Cases Per Pallet Layer</b>	4 Cases	<b>Pallet Type</b>	Euro Pallet
<b>Quantity of Layers Per Pallet</b>	5 Layers	<b>Pallet Height</b>	1.68 MTR
<b>Quantity of Cases Per Pallet</b>	20 Cases	<b>Pallet Gross Weight</b>	312.18 kg

## MARKETING INFORMATION

**Marketing Description**

Collection of rustic breads from french bakery know-how offering a great organoleptic range: intense taste with complex shapes and finishes. A loaf made with wheat, rye, barley, malted wheat flours and wheat sourdough. It is enhanced with a mix of seeds (sunflower, sesame, yellow flax) and is visually appealing thanks to its topping of rolled oats.

## OTHER INFORMATION

<b>Intrastat/Taric Code</b>	1905 90 30
-----------------------------	------------

## CONTACT INFORMATION

Address  
Bridor  
ZA de l'Olivet  
Servon-Sur-Vilaine  
35530  
France

P: (Phone) 00332 99 00 11 67

Complaints Contact  
Laureen DESBAS  
Customer Quality Coordinator  
ldesbas@groupeleduff.com

The information on the [Erudus System](#) has been supplied by the manufacturers of the products and, whilst the owners of the Erudus System take steps to ensure the information is regularly updated, they give no warranty and no guarantee that the information is accurate. Product information and ingredients may change, please always read product labels carefully in addition to using the information provided by Erudus.

We do not accept liability for any inaccuracies or incorrect information contained on this site.  
Please visit <http://www.erudus.com/terms-and-conditions> for full terms and conditions.