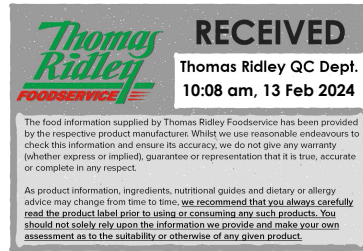


Changed Feb 12, 2024 18:34

Reviewed Feb 12, 2024 18:34

Erudus ID 05e420c98e8e408099411c0ef87f9c78

Version 2.0



JUICEBURST™ 330ml APPLE & BLACKCURRANT

Apple & Blackcurrant Juice Drink With Sweetener. 12x

PRODUCT DESCRIPTION

Apple & Blackcurrant Juice Drink with Sweetener.

| | |
|---------------------------|----------------------------------|
| Brand | Purity Soft Drinks Ltd |
| Manufacturer Product Code | NASJBAPPBLK330ML |
| Product Type | Drink |
| Product Category | Juices and Cordials |
| Storage Type | Ambient |
| Erudus ID | 05e420c98e8e408099411c0ef87f9c78 |
| Specification Type | Drinks |
| Inner Component GTIN | 5038512003023 |
| Outer Case GTIN | 05038512003122 |



INGREDIENTS

Ingredient Declaration

Water, Apple juice from concentrate (37%), Blackcurrant juice from concentrate (8%), Natural flavouring, Sweetener: Steviol glycosides. Preservative: Potassium sorbate.

ALLERGENS

Product Contains:

| | | | |
|---|----|--------------------------------------|----|
| Celery/Celeriac | No | Mustard | No |
| Cereals Containing Gluten | No | Nuts (Tree) | No |
| Barley | No | Almond nuts | No |
| Oats | No | Brazil nuts | No |
| Rye | No | Cashew nuts | No |
| Wheat (including Spelt and Khorasan) | No | Hazelnuts | No |
| Crustacea | No | Macadamia (Queensland) nuts | No |
| Eggs | No | Pecan nuts | No |
| Fish | No | Pistachio nuts | No |
| Lupin | No | Walnuts | No |
| Milk | No | Peanuts | No |
| Molluscs | No | Sesame Seeds | No |
| | | Soybeans | No |
| | | Sulphur Dioxide and Sulphites | No |

SUPPLEMENTARY INGREDIENT INFORMATION

| | |
|---------------------------------------|----|
| Palm Oil | No |
| Hydrogenated Vegetable Oil/Fat | No |
| GM Protein/DNA | No |

ADDITIVES

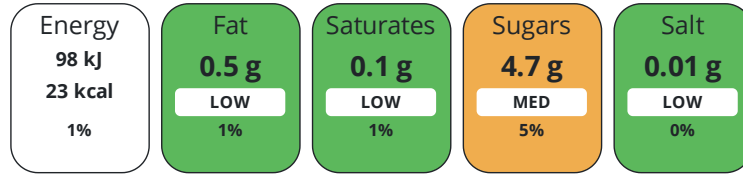
Product Contains:

| | | | |
|-------------------------------------|--------------|---------------------------------|--------------|
| Artificial Antioxidants | No | Artificial Flavourings | No |
| Artificial Colours | No | Artificial Preservatives | Yes |
| Artificial Flavour Enhancers | No | Artificial Sweeteners | No |
| Vegan Diet | Suitable for | Vegetarian Diet | Suitable for |
| Halal Diet | No | Kosher Diet | No |

DIET
SUITABILITY

NUTRITIONAL
INFORMATION

Each 100g/ml portion contains:



of your reference intake.

Typical values per 100g/ml : Energy 23kcal / 98kJ

| Nutrient | per 100ml | RI per 100ml |
|---------------------------|-----------|--------------|
| Energy (kJ) | 98 kJ | 1% |
| Energy (kcal) | 23 kcal | 1% |
| Fat | < 0.5 g | 1% |
| of which Saturates | < 0.1 g | 1% |
| Carbohydrate | 4.9 g | 2% |
| of which Sugars | 4.7 g | 5% |
| Fibre | < 0.5 g | |
| Protein | < 0.5 g | 1% |
| Salt | < 0.01 g | 0% |
| Sodium | 0 mg | |

SUPPLEMENTARY
NUTRITIONAL
INFORMATION

HANDLING &
STORAGE
INFORMATION

Directions For Use

Oral consumption

Storage Instructions

Store in cool dry conditions away from strong light sources. Best served chilled and shake well before use. Once opened keep in the fridge and consume within 3 days.

| | | | |
|---|----------|---|----|
| Shelf Life from Time of Production | 270 Days | Exempt From Shelf Life Labelling | No |
|---|----------|---|----|

ACCREDITATIONS/
CERTIFICATIONS/
ASSURANCE
SCHEMES



Other Accreditation

None

ORIGIN

Product Country of Origin/Place of Not Specified

Provenance

Additional Origin Details

Bottled in UK. Compulsory or voluntary country of original labelling not present.

PRODUCT CHARACTERISTICS

Standards Testing

Do you undertake trend analysis of microbiological results? Yes

Is shelf life testing undertaken? Yes

Microbiological Standards

| Organism | Description | Frequency | Target | Maximum | Sample (g or ml) |
|--|-------------|-------------|--------|---------|------------------|
| Total Viable Count (TVC) (cfu/g or ml) | | Every Batch | <1 | 0 | 5 |
| Yeast (cfu/g or ml) | | Every Batch | <1 | 0 | 5 |
| Moulds (cfu/g or ml) | | Every Batch | <1 | 0 | 5 |

Analytical Standards

| Test | Description | Frequency | Target | Range | Sample (g or ml) |
|-------------|-------------|-------------|--------|------------|------------------|
| Acidity (%) | | Every Batch | =0.15 | 0.1 to 0.2 | 10 |
| Brix °Bx | | Every Batch | =5.3 | 5.1 to 5.5 | 1 |
| pH | | Every Batch | <4 | 0 to 4 | 330 |

CONFIGURATION

Case Configuration

Inner Pack Configuration

Total Quantity of Inner Components in Outer Case 12 Units

Is the Outer Case Splittable? Yes

PRODUCT WEIGHTS

Inner Component

Outer Case

Outer Case Gross Weight 4.5 kg

Outer Case Net Weight 4.04 kg

PRODUCT DIMENSIONS

Inner Component

Inner Component Depth 172 mm

Inner Component Width 57 mm

Inner Component Height 57 mm

Outer Case

Outer Case Depth 228 mm

Outer Case Width 171 mm

Outer Case Height 173 mm

PALLET INFORMATION

Quantity of Cases Per Pallet Layer 31 Cases

Pallet Height 1.2 MTR

Quantity of Layers Per Pallet 6 Layers

Pallet Gross Weight 872 kg

Quantity of Cases Per Pallet 186 Cases

PACKAGING

Inner Component Packaging

| Type | Materials | Weight | Recycled Plastic % | Recyclable | Returnable | Composite |
|--------|-----------|--------|--------------------|------------|------------|-----------|
| Bottle | Plastic | 19.8 g | - % | | | |

Outer Case Packaging

| Type | Materials | Weight | Recycled Plastic % | Recyclable | Returnable | Composite |
|------|-----------------|--------|--------------------|------------|------------|-----------|
| Case | Plastic | 18 g | - % | | | |
| Case | Paper/Cardboard | 1 g | - % | | | |

Transport Packaging

| Type | Materials | Weight | Recycled Plastic % | Recyclable | Returnable | Composite |
|-------|-----------------|---------|--------------------|------------|------------|-----------|
| Other | Plastic | 500 g | - % | | | |
| Other | Paper/Cardboard | 1000 g | - % | | | |
| Other | Wood | 35000 g | - % | | | |

OTHER INFORMATION

Manufacturer Comments

It provides 1 of your 5 daily portions of fruit and vegetables. No added sugar (Contains naturally occurring sugars) No artificial colours, flavours or sweeteners Bottled in UK Compliant with the Requirements for School Food Regulations 2014

CONTACT INFORMATION

Address

Purity Soft Drinks Ltd
Douglas House
Mounts Road
Wednesbury
West Midlands
WS10 0BU
England

P: (Phone) 01215057585

The information on the [Erudus System](#) has been supplied by the manufacturers of the products and, whilst the owners of the Erudus System take steps to ensure the information is regularly updated, they give no warranty and no guarantee that the information is accurate. Product information and ingredients may change, please always read product labels carefully in addition to using the information provided by Erudus.

We do not accept liability for any inaccuracies or incorrect information contained on this site.
Please visit <http://www.erudus.com/terms-and-conditions> for full terms and conditions.