

Changed Jul 08, 2024 11:55

Reviewed Jul 08, 2024 11:55

Erudus ID 0f126f7b7d2a4b4ab5199b54fbade311

Version 2.0

03862

Gluten Free Garden Vegetable Goujons 35g

Gluten Free Garden Vegetable Goujons 2x43x35g

PRODUCT DESCRIPTION

Seasoned garden vegetables coated in a gluten free batter and crumb

Brand	Red House Foods Ltd
Manufacturer Product Code	671272
Product Type	Food
Product Category	Other
Storage Type	Frozen
Erudus ID	0f126f7b7d2a4b4ab5199b54fbade311
Specification Type	Generic

Outer Case GTIN 5060112671272



INGREDIENTS

Ingredient Declaration

Water, dried potato, sweetcorn (8%), peas (8%), carrots (8%), potatoes (8%), spring onions, rapeseed oil, rice flour, gram flour, maize flour, maize starch, potato starch, onion powder, salt, raising agents: diphosphates and sodium carbonates. dextrose, ground black pepper, stabiliser: xanthan gum.

ALLERGENS

Product Contains:

Celery/Celery	No	Mustard	No
Cereals Containing Gluten	No	Nuts (Tree)	No
Barley	No	Almond nuts	No
Oats	No	Brazil nuts	No
Rye	No	Cashew nuts	No
Wheat (including Spelt and Khorasan)	No	Hazelnuts	No
Crustacea	No	Macadamia (Queensland) nuts	No
Eggs	No	Pecan nuts	No
Fish	No	Pistachio nuts	No
Lupin	No	Walnuts	No
Milk	No	Peanuts	No
Molluscs	No	Sesame Seeds	No
		Soybeans	No
		Sulphur Dioxide and Sulphites	No

Additional Allergen Information

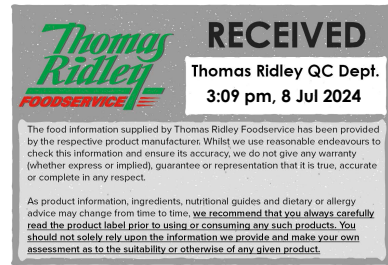
Not specified.

FREE FROM CLAIMS

Gluten-Free Yes

SUPPLEMENTARY INGREDIENT INFORMATION

Palm Oil	No
Hydrogenated Vegetable Oil/Fat	No
GM Protein/DNA	No



ADDITIVES

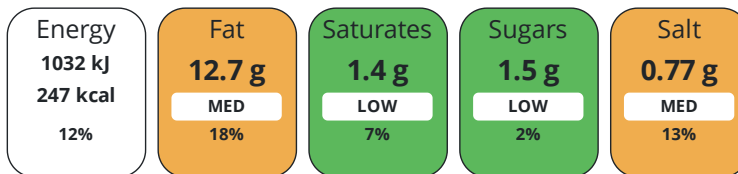
Product Contains:

Artificial Antioxidants	No	Artificial Flavourings	No
Artificial Colours	No	Artificial Preservatives	No
Artificial Flavour Enhancers	No	Artificial Sweeteners	No
Vegan Diet	Suitable for	Vegetarian Diet	Suitable for
Halal Diet	No	Kosher Diet	No

DIET SUITABILITY

NUTRITIONAL INFORMATION

Each 100g/ml portion contains:



of your reference intake.

Typical values per 100g/ml : Energy 247kcal / 1032kj

Nutrient	per 100g	RI per 100g	per 35g serving	RI per 35g serving
Energy (kJ)	1032 kJ	12%	361.2 kJ	4%
Energy (kcal)	247 kcal	12%	86.5 kcal	4%
Fat	12.7 g	18%	4.4 g	6%
of which Saturates	1.4 g	7%	0.5 g	3%
Carbohydrate	28.3 g	11%	9.9 g	4%
of which Sugars	1.5 g	2%	0.5 g	1%
Fibre	2.3 g		0.8 g	
Protein	3.7 g	7%	1.3 g	3%
Salt	0.77 g	13%	0.3 g	5%
Sodium	308 mg		107.8 mg	
Serving Size	35 g			

SUPPLEMENTARY NUTRITIONAL INFORMATION

HANDLING & STORAGE INFORMATION

Directions For Use

Cooking guidelines Oven cook from frozen. Fan 180 °C, gas 6 for 23 minutes. Product should be cooked until piping hot throughout. These are guidelines only. Cooking appliances vary.

Storage Instructions

Shelf life 12 months from month of production. Store frozen below -18°C

Shelf Life from Time of Production 365 Days

ACCREDITATIONS/ CERTIFICATIONS/ ASSURANCE SCHEMES

BRCGS Certified	BRCGS Gluten-Free
BRCGS Food Safety	Campden Laboratory Accreditation Scheme (CLAS)
Sedex	Other Accreditation

ORIGIN

Product Country of Origin/Place of Provenance United Kingdom

PRODUCT CHARACTERISTICS

Standards Testing	
Do you undertake trend analysis of microbiological results?	No
Is shelf life testing undertaken?	No
Microbiological Standards	

Organism	Description	Frequency	Target	Maximum	Sample (g or ml)
Bacillus Cereus (cfu/g or ml)		Every Batch	<1000	1000	35
E. Coli (cfu/g or ml)		Every Batch	<10	100	35
Listeria Monocytogenes (cfu/g or ml)		Every Batch	<10	100	35
Staphylococcus Aureus (cfu/g or ml)		Every Batch	<50	100	35

HAZARD CONTROLS

Metal Detection	Yes
------------------------	-----

CONFIGURATION

Case Configuration		Inner Pack Configuration	
Total Quantity of Inner Components in Outer Case	86 Units	Quantity of Inner Components in Inner Pack	43
Total Quantity of Inner Packs in Outer Case	2 Units		
Is the Outer Case Splittable?	No		

PRODUCT WEIGHTS

Inner Component		Inner Pack	
Variable Weight Consumer Item	No	Inner Pack Gross Weight	1.52 kg
Inner Component Weight	35 g	Inner Pack Net Weight	1.51 kg
Outer Case			
Outer Case Gross Weight	3.2 kg		
Outer Case Net Weight	3.01 kg		

PRODUCT DIMENSIONS

Inner Component		Inner Pack	
Inner Component Depth	0 mm	Inner Pack Width	460 mm
Inner Component Width	0 mm	Inner Pack Height	610 mm
Inner Component Height	0 mm		
Outer Case			
Outer Case Depth	354 mm		
Outer Case Width	157 mm		
Outer Case Height	176 mm		

PALLET INFORMATION

Quantity of Cases Per Pallet Layer	15 Cases	Pallet Height	1.4 MTR
Quantity of Layers Per Pallet	8 Layers	Pallet Gross Weight	420 kg
Quantity of Cases Per Pallet	120 Cases		

PACKAGING

Inner Pack Packaging						
Type	Materials	Weight	Recycled Plastic %	Recyclable	Returnable	Composite
Bag	Plastic / LDPE (Low Density Polyethylene)	15 g	0 %	No	No	No
Outer Case Packaging						
Type	Materials	Weight	Recycled Plastic %	Recyclable	Returnable	Composite
Box	Paper/Cardboard / Corrugated	150 g	- %	Yes	No	No
Transport Packaging						
Type	Materials	Weight	Recycled Plastic %	Recyclable	Returnable	Composite
Pallet	Wood	15000 g	- %	Yes	Yes	No

Manufacturer Comments

N/A

CONTACT
INFORMATION

Address

Red House Foods Ltd
Stockport Farm
Stockport Road
Amesbury
Wiltshire
SP4 7LN
England

P: (Phone) 01980 677868

Complaints Contact

Lisa Middlebrook
Technical Manager
Lisa@redhousefoods.co.uk

P: (Phone) 01980 677868

Technical Contact

Lisa Middlebrook
Technical Manager
lisa@redhousefoods.co.uk

P: (Phone) 01980 623659

Commercial Contact

Dan Spreadbury
commercial manager
Dan@redhousefoods.co.uk

P: (Phone) (01980) 677862

The information on the [Erudus System](#) has been supplied by the manufacturers of the products and, whilst the owners of the Erudus System take steps to ensure the information is regularly updated, they give no warranty and no guarantee that the information is accurate. Product information and ingredients may change, please always read product labels carefully in addition to using the information provided by Erudus.

We do not accept liability for any inaccuracies or incorrect information contained on this site.
Please visit <http://www.erudus.com/terms-and-conditions> for full terms and conditions.