

Changed Jun 18, 2020 17:42

Erudus ID de08e022f6414da3a6c625ea25cd73c2

Version 1.0

03973

UNCLE JOHN'S SIGNATURE Tomato Ketchup with Sugars and Sweetener (6x1L)

Tomato Ketchup With Sugars And Sweetener

PRODUCT DESCRIPTION

Appearance /Texture: Dark red, smooth, glossy, viscous sauce with visible flecks of spices. Taste: Distinct vinegar and tomato flavour with a hint of spices Aroma: Strong acidic, sweet and tomato aroma with a spicy notes.

| | |
|---------------------------|----------------------------------|
| Brand | AAK Foods Limited |
| Manufacturer Product Code | F2359 (B0668) |
| Product Type | Food |
| Product Category | Sauces |
| Storage Type | Ambient |
| Erudus ID | de08e022f6414da3a6c625ea25cd73c2 |
| Specification Type | Legacy |



| | |
|----------------------|----------------|
| Inner Component GTIN | 5010285105036 |
| Outer Case GTIN | 05010285105203 |



INGREDIENTS

Ingredient Declaration

Water, Glucose-Fructose Syrup, Tomato Paste (7%), Modified Maize Starch, Sugar, Acidity Regulator (Acetic Acid), Salt, Colour (Beetroot Red), Acidity Regulator (Citric Acid), Tomato Spice (Salt, Natural Clove Flavourings, Natural Flavourings, Spice Extract), Preservative (Potassium Sorbate), Seasoning Blend (Tomato Powder, Dextrose, Salt, Spices, Flavourings), Caramelised Sugar Syrup, Colour (Curcumin), Sweetener (Sodium Saccharin).

ALLERGENS

Product Contains:

| | | | |
|---|----|--------------------------------------|----|
| Celery/Celeriac | No | Mustard | No |
| Cereals Containing Gluten | No | Nuts (Tree) | No |
| Barley | No | Almond nuts | No |
| Oats | No | Brazil nuts | No |
| Rye | No | Cashew nuts | No |
| Wheat (including Spelt and Khorasan) | No | Hazelnuts | No |
| Crustacea | No | Macadamia (Queensland) nuts | No |
| Eggs | No | Pecan nuts | No |
| Fish | No | Pistachio nuts | No |
| Lupin | No | Walnuts | No |
| Milk | No | Peanuts | No |
| Molluscs | No | Sesame Seeds | No |
| | | Soybeans | No |
| | | Sulphur Dioxide and Sulphites | No |

RECEIVED

Thomas Ridley QC Dept.
2:56 pm, 29 Mar 2024

The food information supplied by Thomas Ridley Foodservice has been provided by the respective product manufacturers. Whilst we use reasonable endeavours to check this information and ensure its accuracy, we do not give any warranty (whether express or implied), guarantee or representation that it is true, accurate or complete in any respect.

As product information, ingredients, nutritional guides and dietary or allergy advice may change from time to time, we recommend that you always carefully read the product label prior to using or consuming any such products. You should not solely rely upon the information we provide and make your own assessment as to the suitability or otherwise of any given product.



SUPPLEMENTARY
INGREDIENT
INFORMATION

| | |
|---------------------------------------|----|
| Palm Oil | No |
| Hydrogenated Vegetable Oil/Fat | No |
| GM Protein/DNA | No |

ADDITIVES

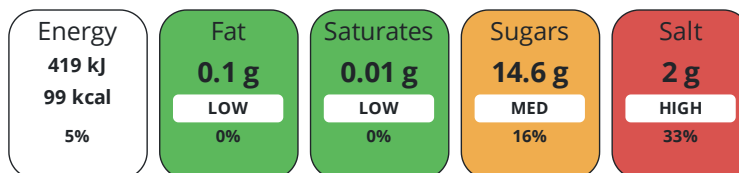
Product Contains:

| | | | |
|-------------------------------------|--------------|---------------------------------|--------------|
| Artificial Antioxidants | Yes | Artificial Flavourings | No |
| Artificial Colours | No | Artificial Preservatives | Yes |
| Artificial Flavour Enhancers | No | Artificial Sweeteners | Yes |
| Suitable for Coeliacs | Yes | Halal Diet | No |
| Kosher Diet | No | Vegetarian Diet | Suitable for |
| Vegan Diet | Suitable for | | |

DIET
SUITABILITY

NUTRITIONAL
INFORMATION

Each 100g/ml portion contains:



of your reference intake.

Typical values per 100g/ml : Energy 99kcal / 419kj

| Nutrient | per 100g/ml | RI per 100g/ml | per 15g/ml serving | RI per 15g/ml serving |
|---------------------------|-------------|----------------|--------------------|-----------------------|
| Energy (kJ) | 419 kJ | 5% | 62.9 kJ | 1% |
| Energy (kcal) | 99 kcal | 5% | 14.9 kcal | 1% |
| Fat | 0.1 g | 0% | - | |
| of which Saturates | 0.01 g | 0% | - | |
| Carbohydrate | 22.1 g | 9% | 3.3 g | 1% |
| of which Sugars | 14.6 g | 16% | 2.2 g | 2% |
| Fibre | 0.3 g | | - | |
| Protein | 0.5 g | 1% | 0.1 g | 0% |
| Salt | 2 g | 33% | 0.3 g | 5% |
| Serving Size | 15 g | | | |

SUPPLEMENTARY
NUTRITIONAL
INFORMATION

HANDLING &
STORAGE
INFORMATION

Directions For Use

Tomato Ketchup is ready to consume as addition to meat meals or as a dip. Use as a sauce or marinade.

Storage Instructions

Store in a cool dry place. Refrigerate after opening and consume within 4 weeks from opening and by date BBE.

Shelf Life from Time of Production 270 Days

ACCREDITATIONS/
CERTIFICATIONS/
ASSURANCE
SCHEMES
ORIGIN

BRCGS Certified

Other Accreditation

Product Country of Origin/Place of United Kingdom

Provenance

Additional Origin Details

Produced in the UK.

| | | | | | | | |
|-------------------------------------|--|---|--|----------------------------|-------------------|-------------------|------------------|
| PRODUCT CHARACTERISTICS | Standards Testing | | | | | | |
| | Do you undertake trend analysis of microbiological results? | No | Is shelf life testing undertaken? | | No | | |
| CONFIGURATION | Case Configuration | | Inner Pack Configuration | | | | |
| | Total Quantity of Inner Components in Outer Case | 6 Units | | | | | |
| | Is the Outer Case Splittable? | Yes | | | | | |
| PRODUCT WEIGHTS | Inner Component | | | | | | |
| | Variable Weight Consumer Item | Yes | | | | | |
| | Net Drained Weight | 0 kg | | | | | |
| | Weight/Volume | | | | | | |
| | 1 x 1Litre e | | | | | | |
| | Outer Case | | | | | | |
| PRODUCT DIMENSIONS | Inner Component | | | | | | |
| | Inner Component Depth | 83 mm | | | | | |
| | Inner Component Width | 83 mm | | | | | |
| | Inner Component Height | 239 mm | | | | | |
| | Outer Case | | | | | | |
| | Outer Case Depth | 254 mm | | | | | |
| | Outer Case Width | 168 mm | | | | | |
| | Outer Case Height | 240 mm | | | | | |
| | PALLET INFORMATION | Quantity of Cases Per Pallet Layer | 25 Cases | Pallet Height | | 1.1 MTR | |
| | | Quantity of Layers Per Pallet | 4 Layers | Pallet Gross Weight | | 692 kg | |
| Quantity of Cases Per Pallet | | 100 Cases | | | | | |
| PACKAGING | Inner Component Packaging | | | | | | |
| | Type | Materials | Weight | Recycled Plastic % | Recyclable | Returnable | Composite |
| | Bottle | Plastic | 51.1 g | - % | | | |
| | Bottle | Paper/Cardboard | 1.2 g | - % | | | |
| | Outer Case Packaging | | | | | | |
| | Type | Materials | Weight | Recycled Plastic % | Recyclable | Returnable | Composite |
| | Case | Plastic | 14 g | - % | | | |
| | Case | Paper/Cardboard | 44 g | - % | | | |
| | Transport Packaging | | | | | | |
| | Type | Materials | Weight | Recycled Plastic % | Recyclable | Returnable | Composite |
| | Other | Plastic | 300 g | - % | | Yes | |
| | Other | Paper/Cardboard | 330 g | - % | | Yes | |
| | Other | Wood | 20000 g | - % | | Yes | |
| | OTHER INFORMATION | Intrastat/Taric Code | 2103200000 | | | | |
| | | Manufacturer Comments | | | | | |
| | Net Drained Weight is nil as Product is packed to an average weight. | | | | | | |

CONTACT
INFORMATION

Address

AAK Foods Limited
AAK (UK) Ltd.
King George Dock
Hull
HU9 5PX
England

P: (Phone) 01482 701271

Technical Contact

Andy Reid
Specifications Admin & Technologist
Andrew.Reid@aak.com

P: (Phone) 01928276040

The information on the [Erudus System](#) has been supplied by the manufacturers of the products and, whilst the owners of the Erudus System take steps to ensure the information is regularly updated, they give no warranty and no guarantee that the information is accurate. Product information and ingredients may change, please always read product labels carefully in addition to using the information provided by Erudus.

We do not accept liability for any inaccuracies or incorrect information contained on this site.
Please visit <http://www.erudus.com/terms-and-conditions> for full terms and conditions.