

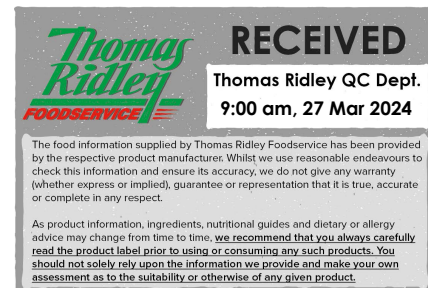
Cadbury CDM Stk 90ml 1x24

Cadbury Cdm Stk 90ml 1x24

PRODUCT DESCRIPTION

Vanilla ice cream dipped in milk chocolate (32%) with a milk chocolate flavoured swirl (8%)

Brand	Froneri Ice Cream UK Limited
Manufacturer Product Code	31024222
Product Type	Food
Product Category	Desserts
Storage Type	Frozen
Erudus ID	dcd371976e154c6aaec3bcfc0a81aa17
Specification Type	Legacy
Inner Component GTIN	5010238022526
Outer Case GTIN	5010238022533



INGREDIENTS

Ingredient Declaration

Partially reconstituted skimmed **MILK** concentrate, Cadbury milk chocolate** (36%) (**MILK**, sugar, cocoa butter, cocoa mass, vegetable fat (palm), emulsifiers (E442, E476), flavourings), coconut oil, sugar, glucose syrup, dried whey (from **MILK**), emulsifier (E471), stabilisers (E412, E410), flavouring, colour (carotenes).

ALLERGENS

Product Contains:

Celery/Celeriac	No	Mustard	No
Cereals Containing Gluten	No	Nuts (Tree)	May Contain
Barley	No	Almond nuts	May Contain
Oats	No	Brazil nuts	May Contain
Rye	No	Cashew nuts	May Contain
Wheat (including Spelt and Khorasan)	No	Hazelnuts	May Contain
Gluten content <20ppm	Yes	Macadamia (Queensland) nuts	May Contain
Crustacea	No	Pecan nuts	May Contain
Eggs	No	Pistachio nuts	May Contain
Fish	No	Walnuts	May Contain
Lupin	No	Peanuts	May Contain
Milk	Yes	Sesame Seeds	No
Molluscs	No	Soybeans	No
		Sulphur Dioxide and Sulphites	No

Risk Source:

SUPPLEMENTARY INGREDIENT INFORMATION

Palm Oil	Yes	Alcoholic Strength %Vol (ABV)	0 % Vol
Hydrogenated Vegetable Oil/Fat	No		
GM Protein/DNA	No		

ADDITIVES

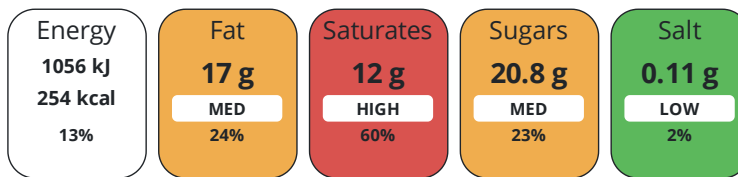
Product Contains:

Artificial Antioxidants	No	Artificial Flavourings	No
Artificial Colours	No	Artificial Preservatives	No
Artificial Flavour Enhancers	No	Artificial Sweeteners	No
Suitable for Coeliacs	No	Halal Diet	No
Kosher Diet	No	Vegetarian Diet	Suitable for
Vegan Diet	No		

DIET SUITABILITY

NUTRITIONAL INFORMATION

Each 100g/ml portion contains:



of your reference intake.

Typical values per 100g/ml : Energy 254kcal / 1056kj

Nutrient	per 100g/ml	RI per 100g/ml
Energy (kJ)	1056 kJ	13%
Energy (kcal)	254 kcal	13%
Fat	17 g	24%
of which Saturates	12 g	60%
of which Mono-unsaturates	0 g	
of which Polyunsaturates	0 g	
Carbohydrate	22 g	8%
of which Sugars	20.8 g	23%
of which Polyols	0 g	
of which Starch	0 g	
Fibre	0.5 g	
Protein	2.9 g	6%
Salt	0.11 g	2%
Sodium	0 mg	

VITAMINS AND MINERALS

Nutrient	per 100g/ml	RI per 100g/ml
Vitamin A	0 µg	0%
Vitamin C	0 mg	0%
Folate/Folic Acid	0 µg	0%
Calcium	0 mg	0%
Iron	0 mg	0%
Zinc	0 mg	0%

SUPPLEMENTARY NUTRITIONAL INFORMATION

Cholesterol per 100 g/ml (UK/FR)	0 g
Trans Fats per 100 g/ml	0 g
Fat Percentage in Dry Matter per 100 g/ml	0 %
Non Milk Extrinsic Sugars per 100 g/ml	0 g

HANDLING & STORAGE INFORMATION

Directions For Use

EAT FROM FROZEN

Storage Instructions

Store Below -18°C KEEP FROZEN

Shelf Life from Time of Production 730 Days

ACCREDITATIONS/ CERTIFICATIONS/ ASSURANCE SCHEMES ORIGIN

BRCGS Certified

Other Accreditation

Product Country of Origin/Place of Provenance United Kingdom

Additional Origin Details

0

PRODUCT CHARACTERISTICS CONFIGURATION

Standards Testing

Case Configuration

Inner Pack Configuration

Total Quantity of Inner Components in Outer Case 24 Units

Is the Outer Case Splittable?

Yes

PRODUCT WEIGHTS

Inner Component

Variable Weight Consumer Item No

Net Drained Weight 4 kg

Weight/Volume

90

Outer Case

Outer Case Gross Weight 1.72 kg

Outer Case Net Weight 1.5 kg

PRODUCT DIMENSIONS

Inner Component

Inner Component Depth 208 mm

Inner Component Width 60 mm

Inner Component Height 20 mm

Outer Case

Outer Case Depth 196 mm

Outer Case Width 291 mm

Outer Case Height 170 mm

PALLET INFORMATION

Quantity of Cases Per Pallet Layer 20 Cases

Pallet Height 0 MTR

Quantity of Layers Per Pallet 9 Layers

Pallet Gross Weight 339.33 kg

Quantity of Cases Per Pallet 180 Cases

PACKAGING

Outer Case Packaging

Type	Materials	Weight	Recycled Plastic %	Recyclable	Returnable	Composite
Case	Plastic	1 g	- %			
Case	Paper/Cardboard	150 g	- %			

Transport Packaging

Type	Materials	Weight	Recycled Plastic %	Recyclable	Returnable	Composite
Other	Plastic	191 g	- %		Yes	
Other	Paper/Cardboard	4 g	- %		Yes	
Other	Wood	30000 g	- %		Yes	

OTHER INFORMATION

Intrastat/Taric Code	0	Identification/Health Marks	0
-----------------------------	---	------------------------------------	---

CONTACT INFORMATION

Address

Froneri Ice Cream UK Limited
 Richmond House
 Leeming Bar Ind Est
 Leeming Bar
 DL7 9UL
 England

P: (Phone) 01677 423397

The information on the [Erudus System](#) has been supplied by the manufacturers of the products and, whilst the owners of the Erudus System take steps to ensure the information is regularly updated, they give no warranty and no guarantee that the information is accurate. Product information and ingredients may change, please always read product labels carefully in addition to using the information provided by Erudus.

We do not accept liability for any inaccuracies or incorrect information contained on this site.
 Please visit <http://www.erudus.com/terms-and-conditions> for full terms and conditions.