

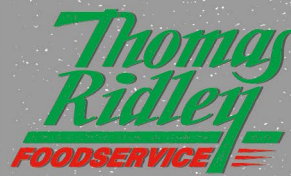
# NielsenIQ Brandbank

## Tropicana Smooth Orange 250ml



EAN  
5022313729824

Target market(s)  
GB, IE



# RECEIVED

Thomas Ridley QC Dept.

2:56 pm, 2 Oct 2023

The food information supplied by Thomas Ridley Foodservice has been provided by the respective product manufacturer. Whilst we use reasonable endeavours to check this information and ensure its accuracy, we do not give any warranty (whether express or implied), guarantee or representation that it is true, accurate or complete in any respect.

As product information, ingredients, nutritional guides and dietary or allergy advice may change from time to time, **we recommend that you always carefully read the product label prior to using or consuming any such products. You should not solely rely upon the information we provide and make your own assessment as to the suitability or otherwise of any given product.**

# Components

## Ingredients

100% Orange Juice

## Nutrition

	Per 100ml	Per 150ml <sup>1</sup>
Energy	172 kJ	258 kJ
	40 kcal	61 kcal (3%)
Fat	0g	0g (0%)
of which		
saturates	0g	0g (0%)
Carbohydrate	9.3g	14g
of which		
sugars <sup>2</sup>	8.6g	13g (14%)
Fibre	0g	0g
Protein	0.8g	1.2g
Salt	0g	0g (0%)
Vitamin C	28mg (35%*)	42mg (53%)
Potassium	200mg (10%*)	300mg (15%)

<sup>1</sup>This pack contains 1-2 servings

<sup>2</sup>Contains naturally occurring sugars from juice

\*Reference Intake of an average adult (8400kJ/2000kcal)

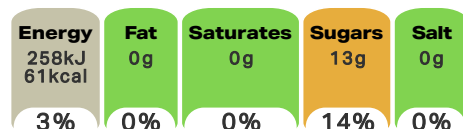
## Calculated Nutrition

	per 100ml	Per 150ml
Energy (kJ)	172	258
Energy (kcal)	40	61
Fat (g)	0	0
of which saturates (g)	0	0
Carbohydrate (g)	9.3	14
of which sugars (g)	8.6	13
Fibre (g)	0	0
Protein (g)	0.8	1.2
Salt (g)	0	0
Vitamin C (mg)	28	42
Potassium (mg)	200	300

## Front of Pack Nutrition

### Per Portion

Each 150ml serving contains



Energy per 100ml: 172 kJ / 40 kcal

Reference Intake of an average adult (8400kJ/2000kcal)

## Nutrition Other Text

This pack contains 1-2 servings

Contains naturally occurring sugars from juice

Reference Intake of an average adult (8400kJ/2000kcal)

## Reference Intake Statement

Reference Intake Statement - Reference Intake of an average adult (8400kJ/2000kcal)

## Product Description

### Alternative Description

Supplier Preferred Product Name - Tropicana Pure Smooth Orange Fruit Juice 48 x 250ml

### Brand

Tropicana

### Features

With No Bits  
Perfectly Pressed, Nothing Added  
1 of your 5 a day

### Standardised Brand

Brand - Tropicana

### Regulated Product Name

100% Pure Squeezed Smooth Orange Juice

## Marketing

### Company Name

Tropicana Brands Group

### Company Address

Tropicana Brands Group  
PO Box 3270  
READING  
RG1 9PE

### Product Marketing

Sometimes having THAT something is having THAT nothing. No added sugar\*—just 100% pure pressed fruit juice, not from concentrate.

Our hand-picked oranges are picked at THAT right moment, and squeezed within 24 hours for THAT fresh flavour.

It's THAT Smoo-oothness. Tropicana, It's THAT juice.

Enjoy on-the-go for a refreshing mid-day treat.

Plus, each 150ml serving contains 1 of your 5 a day, and 53% of your recommended daily Vitamin C intake, which contributes to the reduction of tiredness and fatigue.

\*Enjoy Tropicana as part of varied and balanced diet and healthy lifestyle. Like all other fruit juices, contains naturally occurring sugars.

### Brand Marketing

We've been making juice for over 70 years and still bring the same passion to the process as when we first started. The Tropicana story began with Anthony T. Rossi, who arrived in the U.S. with just \$25 in his pocket. He founded Tropicana in 1947 with the mission of making the goodness of the finest fruit accessible to everyone. We never add sugar, so you can rest assured that all that deliciousness is 100% pure and natural, straight from the fruit, and counts as 1 of your 5 a day.

### Other Information

Tropicana is a registered trade mark of Products, Inc. ©2020

### Further Description

Enjoy Tropicana as part of a varied and balanced diet and healthy lifestyle

### Health Claims

Vitamin C helps to reduce tiredness and fatigue

## Storage & Usage

### Storage and Usage Statements

- Keep Refrigerated

### Storage Type

#### Type

Chilled

### Preparation and Usage

Shake well before serving and use within 5 days of opening.

### Storage

Keep refrigerated.  
For best before date please see lid.

### Date Marking Type

- Best Before

## Brandbank Captured Pack Data

### Pack Size

250ml e

### Numeric Size

Numeric Size - 250

### Pack Type

Type - Plastic Bottle

### Recycling Scheme

- OPRL

### Recycling Other Text

Cap On - Recycle  
Please Recycle Bottle with Cap

### Usage Count

Number of uses - Servings

1-2

### Usage Other Text

This pack contains 1-2 servings

## Customer Services

### Manufacturers Address

Tropicana,  
PO Box 6642,  
Leicester,  
LE4 8WZ.

Sold in Rol by:  
PepsiCo Ireland Food and Beverages UC,  
Dublin 18,  
D18 Y3Y9.

### Return To

Tropicana Brands Group  
PO Box 3270  
READING  
RG1 9PE

### Telephone Helpline

+44 0800 111 4557

## Extended Data

### Description Breakdown

Variant - Smooth Orange

