

Changed Jul 08, 2024 10:17

Reviewed Jul 08, 2024 10:17

Erudus ID fc92b8d7788c41f7a3dc55d0e8f8f3ed

Version 2.0

04454

6x70cl Monin Frosted Mint syrup

Frosted Mint Syrup 6x70cl

PRODUCT DESCRIPTION

Frosted mint flavour syrup

Brand	Bennett Opie Ltd
Manufacturer Product Code	H842
Product Type	Drink
Product Category	Juices and Cordials
Storage Type	Ambient
Erudus ID	fc92b8d7788c41f7a3dc55d0e8f8f3ed
Specification Type	Drinks



Inner Component GTIN 3052910055202

Outer Case GTIN 3052910655204



INGREDIENTS

Ingredient Declaration

Sugar, water, natural mint flavouring, emulsifiers (acacia gum, E445)


ALLERGENS

Product Contains:


Celery/Celериac	No	Mustard	No
Cereals Containing Gluten	No	Nuts (Tree)	No
Barley	No	Almond nuts	No
Oats	No	Brazil nuts	No
Rye	No	Cashew nuts	No
Wheat (including Spelt and Khorasan)	No	Hazelnuts	No
Crustacea	No	Macadamia (Queensland) nuts	No
Eggs	No	Pecan nuts	No
Fish	No	Pistachio nuts	No
Lupin	No	Walnuts	No
Milk	No	Peanuts	No
Molluscs	No	Sesame Seeds	No
		Soybeans	No
		Sulphur Dioxide and Sulphites	No

SUPPLEMENTARY INGREDIENT INFORMATION

Palm Oil	No
Hydrogenated Vegetable Oil/Fat	No
GM Protein/DNA	No



RECEIVED
Thomas Ridley QC Dept.
3:06 pm, 8 Jul 2024



The food information supplied by Thomas Ridley Foodservice has been provided by the respective product manufacturer. Whilst we use reasonable endeavours to check this information and ensure its accuracy, we do not give any warranty (whether express or implied), guarantee or representation that it is true, accurate or complete in any respect.

As product information, ingredients, nutritional guides and dietary or allergy advice may change from time to time, we recommend that you always carefully read the product label prior to using or consuming any such products. You should not solely rely upon the information we provide and make your own assessment as to the suitability or otherwise of any given product.

ADDITIVES

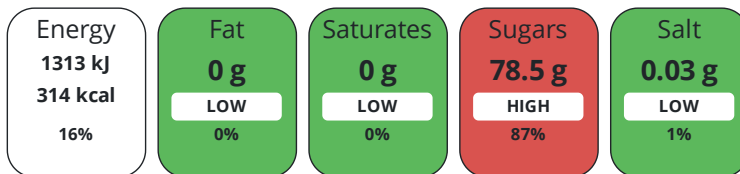
Product Contains:

Artificial Antioxidants	No	Artificial Flavourings	No
Artificial Colours	No	Artificial Preservatives	No
Artificial Flavour Enhancers	No	Artificial Sweeteners	No
Vegan Diet	Suitable for	Vegetarian Diet	Suitable for
Halal Diet	No	Kosher Diet	No

DIET SUITABILITY

NUTRITIONAL INFORMATION

Each 100g/ml portion contains:



of your reference intake.

Typical values per 100g/ml : Energy 314kcal / 1313kJ

Nutrient	per 100ml	RI per 100ml
Energy (kJ)	1313 kJ	16%
Energy (kcal)	314 kcal	16%
Fat	0 g	0%
of which Saturates	0 g	0%
Carbohydrate	78.5 g	30%
of which Sugars	78.5 g	87%
Fibre	0 g	
Protein	0 g	0%
Salt	0.03 g	1%

SUPPLEMENTARY NUTRITIONAL INFORMATION

HANDLING & STORAGE INFORMATION

Directions For Use

multi use

Storage Instructions

Storage conditions after opening: 3 months at room temperature, closed in a clean, dry place.

Shelf Life from Time of Production 1095 Days

ACCREDITATIONS/ CERTIFICATIONS/ ASSURANCE SCHEMES ORIGIN

BRCGS Certified **Other Accreditation**

Product Country of Origin/Place of France

Provenance

Additional Origin Details

manufactured in France

PRODUCT CHARACTERISTICS

Standards Testing

Do you undertake trend analysis of microbiological results?	Yes	Is shelf life testing undertaken?	Yes
--	-----	--	-----

Microbiological Standards

Organism	Description	Frequency	Target	Maximum	Sample (g or ml)
Total Viable Count (TVC) (cfu/g or ml)		Annually	<100	100	10
Yeast (cfu/g or ml)		Annually	<10	10	10
Moulds (cfu/g or ml)		Annually	<10	10	10

Analytical Standards

Test	Description	Frequency	Target	Range	Sample (g or ml)
Brix (°Bx)		Every Batch	=60.9	60.4 to 61.4	10
pH		Every Batch	=7	7 to 7	10

CONFIGURATION

Case Configuration

Inner Pack Configuration

Total Quantity of Inner Components in Outer Case 6 Units

Is the Outer Case Splittable? Yes

PRODUCT WEIGHTS

Inner Component

Inner Component Volume 70 cl

Outer Case

Outer Case Gross Weight 8.5 kg

Outer Case Net Weight 4.2 kg

PRODUCT DIMENSIONS

Inner Component

Inner Component Depth 73 mm

Inner Component Width 73 mm

Inner Component Height 320 mm

Outer Case

Outer Case Depth 240 mm

Outer Case Width 165 mm

Outer Case Height 320 mm

PALLET INFORMATION

Quantity of Cases Per Pallet Layer 29 Cases

Pallet Height 1.5 MTR

Quantity of Layers Per Pallet 4 Layers

Pallet Gross Weight 999.99 kg

Quantity of Cases Per Pallet 116 Cases

PACKAGING

Inner Component Packaging

Type	Materials	Weight	Recycled Plastic %	Recyclable	Returnable	Composite
Bottle	Paper/Cardboard	2 g	- %			
Bottle	Aluminium	3 g	- %			
Bottle	Glass	443 g	- %			

Outer Case Packaging

Type	Materials	Weight	Recycled Plastic %	Recyclable	Returnable	Composite
Case	Paper/Cardboard	245 g	- %			

Transport Packaging

Type	Materials	Weight	Recycled Plastic %	Recyclable	Returnable	Composite
Other	Plastic	300 g	- %			
Other	Wood	30000 g	- %			

Manufacturer Comments

coffee flavoured syrup

Address

Bennett Opie Ltd
Wentworth Court
Sittingbourne
Kent
ME10 3RN
England

P: (Phone) 01795 476154

Complaints Contact

Milena Gradowska
Technical Manager
milena.gradowska@b-opie.com

P: (Phone) 01795413734

Technical Contact

Milena Gradowska
Technical Manager
milena.gradowska@b-opie.com

P: (Phone) 01795413737

Commercial Contact

Paul Fox
Commercial Director
paul.fox@b-opie.com

P: (Phone) 01795413750

The information on the [Erudus System](#) has been supplied by the manufacturers of the products and, whilst the owners of the Erudus System take steps to ensure the information is regularly updated, they give no warranty and no guarantee that the information is accurate. Product information and ingredients may change, please always read product labels carefully in addition to using the information provided by Erudus.

We do not accept liability for any inaccuracies or incorrect information contained on this site.
Please visit <http://www.erudus.com/terms-and-conditions> for full terms and conditions.