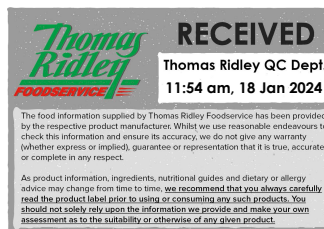


Changed Jan 17, 2024 10:46

Reviewed Jan 17, 2024 10:46

Erudus ID 0c84d6a025804cf99b747c3d7d4daecd

Version 2.0



Red Tractor Sliced Topside Beef

Red Tractor Sliced Topside Beef 500g

PRODUCT DESCRIPTION

Red Tractor certified cooked topside of beef, boneless

Brand	Kings Fine Cooked Meats
Manufacturer Product Code	REDTOPT500
Product Type	Food
Product Category	Pork, Beef & Lamb
Storage Type	Chilled
Erudus ID	0c84d6a025804cf99b747c3d7d4daecd
Specification Type	Meat
Inner Component GTIN	5060388581138
Inner Pack GTIN	5060388581138
Outer Case GTIN	05060388581145

INGREDIENTS

Ingredient Declaration

Beef (100g of Beef per 100g of finished product), Modified Starch, Salt, Dextrose, Stabilisers (E451)

ALLERGENS

Product Contains:

Celery/Celeriac	No	Mustard	No
Cereals Containing Gluten	No	Nuts (Tree)	No
Barley	No	Almond nuts	No
Oats	No	Brazil nuts	No
Rye	No	Cashew nuts	No
Wheat (including Spelt and Khorasan)	No	Hazelnuts	No
Crustacea	No	Macadamia (Queensland) nuts	No
Eggs	No	Pecan nuts	No
Fish	No	Pistachio nuts	No
Lupin	No	Walnuts	No
Milk	No	Peanuts	No
Molluscs	No	Sesame Seeds	No
		Soybeans	No
		Sulphur Dioxide and Sulphites	No

SUPPLEMENTARY INGREDIENT INFORMATION

Palm Oil	No
Hydrogenated Vegetable Oil/Fat	No
GM Protein/DNA	No

ADDITIVES

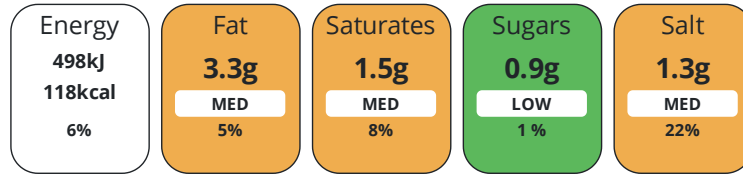
Product Contains:

Artificial Antioxidants	No	Artificial Flavourings	No
Artificial Colours	No	Artificial Preservatives	No
Artificial Flavour Enhancers	No	Artificial Sweeteners	No

DIET SUITABILITY

Halal Diet	No	Kosher Diet	No
------------	----	-------------	----

Each 100g/ml portion contains:



of your reference intake.

Typical values per 100g/ml : Energy 118kcal / 498kj

Nutrient	per 100g	RI per 100g	per 50g serving	RI per 50g serving
Energy (kJ)	498 kJ	6%	249 kJ	3%
Energy (kcal)	118 kcal	6%	59 kcal	3%
Fat	3.3 g	5%	1.7 g	2%
of which Saturates	1.5 g	8%	0.8 g	4%
of which Mono-unsaturates	1.5 g		0.8 g	
Carbohydrate	2.7 g	1%	1.4 g	1%
of which Sugars	0.9 g	1%	0.5 g	1%
of which Polyols	0 g		-	
of which Starch	0 g		-	
Fibre	< 0.5 g		0.3 g	
Protein	20.8 g	42%	10.4 g	21%
Salt	1.3 g	22%	0.7 g	12%

Serving Size	50 g
Number of Servings	10 Servings

Source of Nutritional Information Manufacturers analysis

SUPPLEMENTARY
NUTRITIONAL
INFORMATION

HFSS (HIGH IN
FAT, SALT AND
SUGAR)
HANDLING &
STORAGE
INFORMATION

HFSS Status 2

Directions For Use

Product is ready to eat. For sliced; remove the product from packaging before consuming. For joints; remove the product from packaging and cut to desired size before consuming.

Storage Instructions

Keep refrigerated 0-5°C. Use within 3 days of opening.

Storage Instructions After Opening

Keep refrigerated 0-5°C. Use within 3 days of opening.

Shelf Life from Time of Production	25 Days	Exempt From Shelf Life Labelling	No
Shelf Life From Opening	3 Days		

ACCREDITATIONS/
CERTIFICATIONS/
ASSURANCE
SCHEMES



ORIGIN

Product Country of Origin/Place of Provenance United Kingdom

PRODUCT CHARACTERISTICS	Standards Testing						
	Do you undertake trend analysis of microbiological results?	Yes	Is shelf life testing undertaken?		Yes		
ORGANOLEPTICS							
	Appearance	Deep brown with no bruising or marbling					
	Aroma	Rich, meaty aroma					
	Taste	Rich beef flavour, lean with minimal fat					
	Texture	Tender, easy to chew, internal moisture on chewing					
HAZARD CONTROLS							
	Metal Detection	Yes					
CONFIGURATION	Case Configuration		Inner Pack Configuration				
	Total Quantity of Inner Components in Outer Case	15 Units	Is Inner Pack Splittable?		No		
	Is the Outer Case Splittable?	Yes					
PRODUCT WEIGHTS	Inner Component		Inner Pack				
	Variable Weight Consumer Item	Yes	Inner Pack Gross Weight		524 g		
	Inner Component Weight	500 g	Inner Pack Net Weight		500 g		
	Net Drained Weight	500 g					
	e mark	Yes					
Outer Case							
	Outer Case Gross Weight	7.92 kg					
	Outer Case Net Weight	7.5 kg					
PRODUCT DIMENSIONS	Inner Component		Inner Pack				
	Inner Component Depth	239 mm	Inner Pack Depth		239 mm		
	Inner Component Width	166 mm	Inner Pack Width		166 mm		
	Inner Component Height	37 mm	Inner Pack Height		37 mm		
	Outer Case						
	Outer Case Depth	385 mm					
	Outer Case Width	320 mm					
	Outer Case Height	200 mm					
PALLET INFORMATION	Quantity of Cases Per Pallet Layer	9 Cases	Pallet Height		1.86 MTR		
	Quantity of Layers Per Pallet	8 Layers	Pallet Gross Weight		540 kg		
	Quantity of Cases Per Pallet	72 Cases					
PACKAGING	Inner Pack Packaging						
	Type	Materials	Weight	Recycled Plastic %	Recyclable	Returnable	Composite
	Tray	Plastic	24 g	- %	No	No	
	Outer Case Packaging						
	Type	Materials	Weight	Recycled Plastic %	Recyclable	Returnable	Composite
	Case	Paper/Cardboard	420 g	- %	Yes	No	
	Transport Packaging						
	Type	Materials	Weight	Recycled Plastic %	Recyclable	Returnable	Composite
	Pallet	Wood	25000 g	- %	No	Yes	
	Pallet Wrap	Plastic	325 g	- %	No	No	

CONTACT
INFORMATION

Address

Kings Fine Cooked Meats
69 Queens Street
Wigan
Lancashire
WN3 4HW
United Kingdom

P: (Phone) 01942322398

The information on the [Erudus System](#) has been supplied by the manufacturers of the products and, whilst the owners of the Erudus System take steps to ensure the information is regularly updated, they give no warranty and no guarantee that the information is accurate. Product information and ingredients may change, please always read product labels carefully in addition to using the information provided by Erudus.

We do not accept liability for any inaccuracies or incorrect information contained on this site.
Please visit <http://www.erudus.com/terms-and-conditions> for full terms and conditions.