

ChangedJun 03, 2024 15:12

ReviewedJun 03, 2024 15:12

Erudus IDE810fafddc8a482a808f210840de644f

Version2.0

04699

# Cirio Chopped Tomatoes 6 x 2550g

Chopped Tomatoes 6x2550g

PRODUCT DESCRIPTION

Chopped tomatoes in tomato juice

Brand	Conserve Italia Soc. coop. agricola
Manufacturer Product Code	050936
Product Type	Food
Product Category	Vegetables - Canned
Storage Type	Ambient
Erudus ID	e810fafddc8a482a808f210840de644f
Specification Type	Fruit and Vegetables



Inner Component GTIN	8000320381676
Outer Case GTIN	8000320998256



## INGREDIENTS

**Ingredient Declaration**

Chopped tomatoes 65%, tomato juice, acidity regulator citric acid

## ALLERGENS

Product Contains:

Celery/Celeriac	No	Mustard	No
Cereals Containing Gluten	No	Nuts (Tree)	No
Barley	No	Almond nuts	No
Oats	No	Brazil nuts	No
Rye	No	Cashew nuts	No
Wheat (including Spelt and Khorasan)	No	Hazelnuts	No
Crustacea	No	Macadamia (Queensland) nuts	No
Eggs	No	Pecan nuts	No
Fish	No	Pistachio nuts	No
Lupin	No	Walnuts	No
Milk	No	Peanuts	No
Molluscs	No	Sesame Seeds	No
		Soybeans	No
		Sulphur Dioxide and Sulphites	No

## SUPPLEMENTARY INGREDIENT INFORMATION

Palm Oil	No
Hydrogenated Vegetable Oil/Fat	No
GM Protein/DNA	No

Thomas Ridley

FOODSERVICE

RECEIVED

Thomas Ridley QC Dept.

10:48 am, 5 Jun 2024

The food information supplied by Thomas Ridley Foodservice has been provided by the respective product manufacturer. Whilst we use reasonable endeavours to check this information and ensure its accuracy, we do not give any warranty (whether express or implied), guarantee or representation that it is true, accurate or complete in any respect.

As product information, ingredients, nutritional guides and dietary or allergy advice may change from time to time, we recommend that you always carefully read the product label prior to using or consuming any such products. You should not solely rely upon the information we provide and make your own assessment as to the suitability or otherwise of any given product.



ADDITIVES

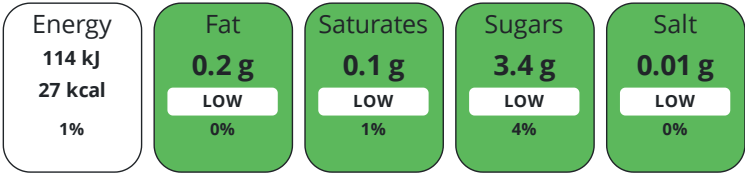
Product Contains:

Artificial Antioxidants	No	Artificial Flavourings	No
Artificial Colours	No	Artificial Preservatives	No
Artificial Flavour Enhancers	No	Artificial Sweeteners	No
Vegan Diet	Suitable for	Vegetarian Diet	Suitable for
Halal Diet	No	Kosher Diet	No

DIET  
SUITABILITY

NUTRITIONAL  
INFORMATION

Each 100g/ml portion contains:



of your reference intake.

Typical values per 100g/ml : Energy 27kcal / 114kJ

Nutrient	per 100g	RI per 100g
Energy (kJ)	114 kJ	1%
Energy (kcal)	27 kcal	1%
Fat	0.2 g	0%
of which Saturates	0.1 g	1%
Carbohydrate	4.4 g	2%
of which Sugars	3.4 g	4%
Fibre	0.8 g	
Protein	1.1 g	2%
Salt	0.01 g	0%

SUPPLEMENTARY  
NUTRITIONAL  
INFORMATION

HANDLING &  
STORAGE  
INFORMATION

Directions For Use

Ideal for "bruschetta" or vegetable dishes

Storage Instructions

Ambient storage.

Storage Instructions After Opening

Once opened transfer to a non-metallic bowl and keep refrigerated. Consume within 3-4 days

Shelf Life from Time of Production	1095 Days
Shelf Life From Opening	4 Days

ACCREDITATIONS/  
CERTIFICATIONS/  
ASSURANCE  
SCHEMES  
ORIGIN

BRCGS Certified	IFS Food Standard
Product Country of Origin/Place of Provenance	Italy

PRODUCT  
CHARACTERISTICS

Standards Testing	
Do you undertake trend analysis of microbiological results?	No
Is shelf life testing undertaken?	Yes
Analytical Standards	

	Test	Description	Frequency	Target	Range	Sample (g or ml)	
	Brix (°Bx)		Hourly	≈6.5	6 to 7	2550	
	pH		Hourly	≈4.3	4.2 to 4.4	2550	
	Physical Standards						
	Test	Description	Frequency	Target	Range	Sample (g or ml)	
	Weight (g)		Hourly	≈2500	2462.5 to 2510	2550	
	Case Configuration			Inner Pack Configuration			
	Total Quantity of Inner Components in Outer Case		6 Units				
	Is the Outer Case Splittable?		Yes				
	Inner Component						
	Variable Weight Consumer Item		No				
	Inner Component Weight		2550 g				
PRODUCT WEIGHTS	e mark		Yes				
	Outer Case						
	Outer Case Gross Weight		17.2 kg				
	Outer Case Net Weight		15 kg				
PRODUCT DIMENSIONS	Inner Component						
	Inner Component Depth		155 mm				
	Inner Component Width		155 mm				
	Inner Component Height		152 mm				
	Outer Case						
	Outer Case Depth		320 mm				
	Outer Case Width		490 mm				
	Outer Case Height		160 mm				
PALLET INFORMATION	Quantity of Cases Per Pallet Layer		7 Cases		Pallet Height		1.6 MTR
	Quantity of Layers Per Pallet		9 Layers		Pallet Gross Weight		1108.6 kg
	Quantity of Cases Per Pallet		63 Cases				
	PACKAGING	Inner Component Packaging					
Type		Materials	Weight	Recycled Plastic %	Recyclable	Returnable	Composite
Can		Paper/Cardboard	2.15 g	- %			
Can		Steel	242 g	- %			
	Outer Case Packaging						
	Type	Materials	Weight	Recycled Plastic %	Recyclable	Returnable	Composite
	Case	Plastic	45 g	- %			
	Case	Paper/Cardboard	60 g	- %			
	Transport Packaging						
	Type	Materials	Weight	Recycled Plastic %	Recyclable	Returnable	Composite
	Other	Plastic	530 g	- %		Yes	
	Other	Paper/Cardboard	2800 g	- %		Yes	
	Other	Wood	25000 g	- %		Yes	

OTHER  
INFORMATION  
CONTACT  
INFORMATION

Address

Conserve Italia Soc. coop. agricola  
Via Poggi, 11  
40068 San Lazzaro di Savena  
Bologna  
Italy

P: (Phone) 00 39 051 622 8311

Technical Contact

Alessia De Santis  
Quality Assurance  
adesantis@ccci.it

P: (Phone) 00 39 051 622 8337

Commercial Contact

Terry Overs  
Foodservice Manager  
tovers@ccci.it

P: (Phone) 07796 697891

The information on the [Erudus System](#) has been supplied by the manufacturers of the products and, whilst the owners of the Erudus System take steps to ensure the information is regularly updated, they give no warranty and no guarantee that the information is accurate. Product information and ingredients may change, please always read product labels carefully in addition to using the information provided by Erudus.

We do not accept liability for any inaccuracies or incorrect information contained on this site.  
Please visit <http://www.erudus.com/terms-and-conditions> for full terms and conditions.