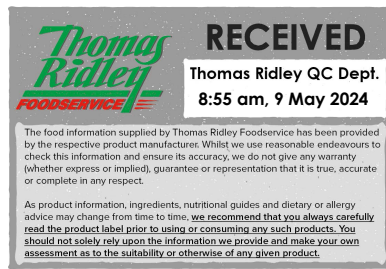


**Changed** May 08, 2024 14:30  
**Reviewed** May 08, 2024 14:30  
**Erudus ID** 50f767b4e41d41b1bfed45c7460d10fc  
**Version** 2.0



05019

# Campesino Goat's Cheese Log, 4x1kg

Goat's Cheese Log

## PRODUCT DESCRIPTION

Large individual logs of soft goats cheese with a white mould rind packed in a plastic tray.

<b>Brand</b>	Futura Foods UK Ltd
<b>Manufacturer Product Code</b>	15129 / CAM102
<b>Product Type</b>	Food
<b>Product Category</b>	Sheep & Goats Cheese
<b>Storage Type</b>	Chilled
<b>Erudus ID</b>	50f767b4e41d41b1bfed45c7460d10fc
<b>Specification Type</b>	Cheese
<b>Inner Component GTIN</b>	5038961000376
<b>Outer Case GTIN</b>	25038961000370



## INGREDIENTS

### Ingredient Declaration

Pasteurised Goat's MILK, Salt, Microbial Rennet, Cultures (Lactic Ferments), Penicillium

## ALLERGENS

Product Contains:

<b>Celery/Celeriac</b>	No
<b>Cereals Containing Gluten</b>	No
<b>Barley</b>	No
<b>Oats</b>	No
<b>Rye</b>	No
<b>Wheat (including Spelt and Khorasan)</b>	No
<b>Crustacea</b>	No
<b>Eggs</b>	No
<b>Fish</b>	No
<b>Lupin</b>	No
<b>Milk</b>	Yes
<b>Molluscs</b>	No
<b>Mustard</b>	No
<b>Nuts (Tree)</b>	No
<b>Almond nuts</b>	No
<b>Brazil nuts</b>	No
<b>Cashew nuts</b>	No
<b>Hazelnuts</b>	No
<b>Macadamia (Queensland) nuts</b>	No
<b>Pecan nuts</b>	No
<b>Pistachio nuts</b>	No
<b>Walnuts</b>	No
<b>Peanuts</b>	No
<b>Sesame Seeds</b>	No
<b>Soybeans</b>	No
<b>Sulphur Dioxide and Sulphites</b>	No

**Additional Allergen Information**

Contains MILK

SUPPLEMENTARY INGREDIENT INFORMATION

<b>Palm Oil</b>	No
<b>Hydrogenated Vegetable Oil/Fat</b>	No
<b>GM Protein/DNA</b>	No

ADDITIVES

Product Contains:

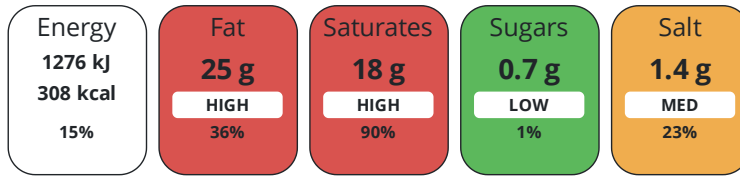
<b>Artificial Antioxidants</b>	No
<b>Artificial Colours</b>	No
<b>Artificial Flavour Enhancers</b>	No
<b>Artificial Flavourings</b>	No
<b>Artificial Preservatives</b>	No
<b>Artificial Sweeteners</b>	No

DIET SUITABILITY

<b>Vegetarian Diet</b>	Suitable for	<b>Halal Diet</b>	No
<b>Kosher Diet</b>	No		

NUTRITIONAL INFORMATION

Each 100g/ml portion contains:



of your reference intake.

Typical values per 100g/ml : Energy 308kcal / 1276kJ

Nutrient	per 100g	RI per 100g
Energy (kJ)	1276 kJ	15%
Energy (kcal)	308 kcal	15%
Fat	25 g	36%
of which Saturates	18 g	90%
Carbohydrate	3.1 g	1%
of which Sugars	0.7 g	1%
Protein	1 g	2%
Salt	1.4 g	23%

SUPPLEMENTARY NUTRITIONAL INFORMATION

Fat Percentage in Dry Matter per 100 g/ml	45 %
---	------

HANDLING & STORAGE INFORMATION

Directions For Use

Once opened keep refrigerated & use within 3 days. Do not exceed the expiry date

Storage Instructions

Keep Refrigerated

Shelf Life from Time of Production	67 Days
------------------------------------	---------

Exempt From Shelf Life Labelling	No
----------------------------------	----

ACCREDITATIONS/ CERTIFICATIONS/ ASSURANCE SCHEMES

BRCGS Certified	IFS Food Standard
-----------------	-------------------

Other Accreditation

ORIGIN

Product Country of Origin/Place of Provenance	Spain
---	-------

Provenance

Additional Origin Details

Spain

PRODUCT CHARACTERISTICS

Standards Testing

Do you undertake trend analysis of microbiological results?	No
---	----

Is shelf life testing undertaken?	No
-----------------------------------	----

Microbiological Standards

Organism	Description	Frequency	Target	Maximum	Sample (g or ml)
Listeria Monocytogenes (cfu/g or ml)		Every Batch	=0	0	25
Salmonella (cfu/g or ml)		Every Batch	=0	0	25
Staphylococcus Aureus (cfu/g or ml)		Every Batch	<100	100	1
E. Coli (cfu/g or ml)		Every Batch	<1000	100	100

Analytical Standards

Test	Description	Frequency	Target	Range	Sample (g or ml)
pH		Every Batch	=4.5	4.3 to 4.8	100
Moisture (%)		Every Batch	<52	40 to 52	100

CONFIGURATION

Case Configuration

<b>Total Quantity of Inner Components in Outer Case</b>	4 Units
<b>Is the Outer Case Splittable?</b>	Yes
Inner Pack Configuration	

PRODUCT WEIGHTS

Inner Component

<b>Variable Weight Consumer Item</b>	Yes
--------------------------------------	-----

Outer Case

<b>Outer Case Gross Weight</b>	4.63 kg
<b>Outer Case Net Weight</b>	4 kg

PRODUCT DIMENSIONS

Inner Component

<b>Inner Component Depth</b>	230 mm
<b>Inner Component Width</b>	77 mm
<b>Inner Component Height</b>	77 mm

Outer Case

<b>Outer Case Depth</b>	550 mm
<b>Outer Case Width</b>	260 mm
<b>Outer Case Height</b>	106 mm

PALLET INFORMATION

<b>Quantity of Cases Per Pallet Layer</b>	6 Cases
<b>Quantity of Layers Per Pallet</b>	15 Layers
<b>Quantity of Cases Per Pallet</b>	90 Cases
<b>Pallet Height</b>	1.7 MTR

PACKAGING

Inner Component Packaging

Type	Materials	Weight	Recycled Plastic %	Recyclable	Returnable	Composite
Tub	Plastic	95 g	- %			
Tub	Paper/Cardboard	1 g	- %			

Outer Case Packaging

Type	Materials	Weight	Recycled Plastic %	Recyclable	Returnable	Composite
Case	Paper/Cardboard	300 g	- %			

OTHER INFORMATION

Manufacturer Comments

N/A

CONTACT INFORMATION

Address

Futura Foods UK Ltd

The Priory

Long Street

Dursley

GL11 4HR

England

P: (Phone) 01666 890500

The information on the [Erudus System](#) has been supplied by the manufacturers of the products and, whilst the owners of the Erudus System take steps to ensure the information is regularly updated, they give no warranty and no guarantee that the information is accurate. Product information and ingredients may change, please always read product labels carefully in addition to using the information provided by Erudus.

We do not accept liability for any inaccuracies or incorrect information contained on this site.

Please visit <http://www.erudus.com/terms-and-conditions> for full terms and conditions.