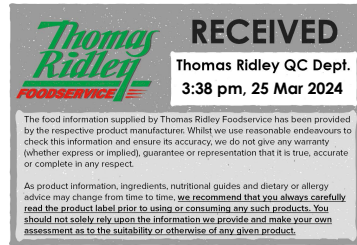


Changed Mar 25, 2024 11:58

Reviewed Mar 25, 2024 11:58

Erudus ID 4cad6d83ea494a128592cb0265a41960

Version 2.0



05047

# Lemon and Pepper Skinless Salmon Portions 10 x 140-160g

Frozen Raw Lemon And Pepper Skinless Salmon Portions 1x140g

## PRODUCT DESCRIPTION

Skinless and boneless Atlantic salmon fillet portions seasoned with lemon and pepper

Brand	Pacific West Foods
Manufacturer Product Code	LPSP140PW
Product Type	Food
Product Category	Fish - Portioned
Storage Type	Frozen
Erudus ID	4cad6d83ea494a128592cb0265a41960
Specification Type	Fish and Seafood



Outer Case GTIN 5060281501219



## INGREDIENTS

### Ingredient Declaration

Farmed Atlantic Salmon (*Salmo salar*) (**FISH**), water, Salt (98%), Coating (2%) [cane sugar, Spices (pepper 19%, chilli, garlic, turmeric) hydrolysed vegetable protein (rape corn), red pepper, salt, lemon peel (8%), millet seeds, citric acid (E330) lemon oil]

### Ingredient Statements

Although every care has been taken to remove all bones, some small bones may remain.

## ALLERGENS

Product Contains:

Celery/Celeriac	No	Mustard	No
Cereals Containing Gluten	No	Nuts (Tree)	No
Barley	No	Almond nuts	No
Oats	No	Brazil nuts	No
Rye	No	Cashew nuts	No
Wheat (including Spelt and Khorasan)	No	Hazelnuts	No
Crustacea	No	Macadamia (Queensland) nuts	No
Eggs	No	Pecan nuts	No
Fish	Yes	Pistachio nuts	No
Lupin	No	Walnuts	No
Milk	No	Peanuts	No
Molluscs	No	Sesame Seeds	No
		Soybeans	No
		Sulphur Dioxide and Sulphites	No

### Allergen Statement On Pack

For allergens, see ingredients in bold

## SUPPLEMENTARY INGREDIENT INFORMATION

Palm Oil	No
Hydrogenated Vegetable Oil/Fat	No
GM Protein/DNA	No

ADDITIVES

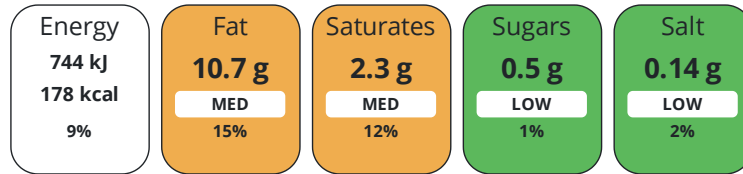
Product Contains:

<b>Artificial Antioxidants</b>	No	<b>Artificial Flavourings</b>	No
<b>Artificial Colours</b>	No	<b>Artificial Preservatives</b>	No
<b>Artificial Flavour Enhancers</b>	No	<b>Artificial Sweeteners</b>	No
<b>Halal Diet</b>	No	<b>Kosher Diet</b>	No

DIET SUITABILITY

NUTRITIONAL INFORMATION

Each 100g/ml portion contains:



of your reference intake.

Typical values per 100g/ml : Energy 178kcal / 744kj

Nutrient	per 100g	RI per 100g
<b>Energy (kJ)</b>	744 kJ	9%
<b>Energy (kcal)</b>	178 kcal	9%
<b>Fat</b>	10.7 g	15%
<b>of which Saturates</b>	2.3 g	12%
<b>Carbohydrate</b>	1 g	0%
<b>of which Sugars</b>	< 0.5 g	1%
<b>Protein</b>	19.5 g	39%
<b>Salt</b>	0.14 g	2%

SUPPLEMENTARY NUTRITIONAL INFORMATION

HANDLING & STORAGE INFORMATION

**Directions For Use**

OVEN BAKE For best results cook from frozen Pre heat oven to 200°C gas mark 6, remove all packaging and wrap loosely in foil. Bake in the centre of the oven for 15-20 minutes or until cooked thoroughly through.

**Storage Instructions**

Keep frozen -18C. If defrosted do not refreeze

<b>Shelf Life from Time of Production</b>	690 Days	<b>Exempt From Shelf Life Labelling</b>	No
---	----------	---	----

<b>BRCGS Certified</b>	<b>Sedex</b>
------------------------	--------------

ACCREDITATIONS/ CERTIFICATIONS/ ASSURANCE SCHEMES ORIGIN

<b>Product Country of Origin/Place of</b>	Poland
---	--------

**Provenance**

<b>Fish Species</b>	Salmon (Atlantic) - Salmo salar
---------------------	---------------------------------

**Catch Method Other**

Farmed in Norway in open net pens

Standards Testing	
-------------------	--

PRODUCT CHARACTERISTICS

<b>Do you undertake trend analysis of microbiological results?</b>	No	<b>Is shelf life testing undertaken?</b>	Yes
--	----	--	-----

Microbiological Standards

Organism	Description	Frequency	Target	Maximum	Sample (g or ml)
Total Viable Count (TVC) (cfu/g or ml)		Every Batch	<500000	500000	25
Yeast (cfu/g or ml)	combined yeast and mould	Every Batch	<10000	10000	25
E. Coli (cfu/g or ml)		Every Batch	<10	10	25
Salmonella (cfu/g or ml)		Every Batch	=0	0	25
Staphylococcus Aureus (cfu/g or ml)		Every Batch	<100	100	25
Enterobacteriaceae (cfu/g or ml)		Every Batch	<10000	10000	25

SUPPLEMENTARY INFORMATION

<b>Fried During Manufacture</b>	No
---------------------------------	----

ORGANOLEPTICS

<b>Appearance</b>	meat typical for this type of fish
<b>Aroma</b>	aromatic odour
<b>Taste</b>	aromatic
<b>Texture</b>	delicate juicy

HAZARD CONTROLS

<b>Metal Detection</b>	Yes
------------------------	-----

CONFIGURATION

Case Configuration	Inner Pack Configuration
--------------------	--------------------------

<b>Total Quantity of Inner Components in Outer Case</b>	1 Units
---	---------

<b>Is the Outer Case Splittable?</b>	No
--------------------------------------	----

PRODUCT WEIGHTS

Inner Component	
<b>Variable Weight Consumer Item</b>	No

<b>Inner Component Weight</b>	140 g
-------------------------------	-------

Outer Case	
<b>Outer Case Gross Weight</b>	1.58 kg

<b>Outer Case Net Weight</b>	1.4 kg
------------------------------	--------

PRODUCT DIMENSIONS

Inner Component	
<b>Inner Component Depth</b>	600 mm

<b>Inner Component Width</b>	440 mm
------------------------------	--------

<b>Inner Component Height</b>	1 mm
-------------------------------	------

Outer Case	
<b>Outer Case Depth</b>	260 mm

<b>Outer Case Width</b>	196 mm
-------------------------	--------

<b>Outer Case Height</b>	83 mm
--------------------------	-------

PALLET INFORMATION

<b>Quantity of Cases Per Pallet Layer</b>	18 Cases	<b>Pallet Height</b>	1.78 MTR
---	----------	----------------------	----------

<b>Quantity of Layers Per Pallet</b>	18 Layers	<b>Pallet Gross Weight</b>	570 kg
--------------------------------------	-----------	----------------------------	--------

<b>Quantity of Cases Per Pallet</b>	336 Cases
-------------------------------------	-----------

PACKAGING

Inner Component Packaging						
Type	Materials	Weight	Recycled Plastic %	Recyclable	Returnable	Composite

Pack	Plastic / PE (Polyethylene)	6 g	0 %	No	No	Yes
------	-----------------------------	-----	-----	----	----	-----

Outer Case Packaging

Type	Materials	Weight	Recycled Plastic %	Recyclable	Returnable	Composite
Case	Paper/Cardboard / Carton Board	151 g	- %	Yes	No	No

OTHER INFORMATION

<b>Commodity Code</b>	03054100	<b>Identification/Health Marks</b>	PL 3201 1807 WE
-----------------------	----------	------------------------------------	-----------------

**Manufacturer Comments**

Case consists of 10 x portions in case. pallet layers 18 + 12 on top

CONTACT INFORMATION

Address

Pacific West Foods  
 3 Willowside Park  
 Canal Road  
 Trowbridge  
 Wiltshire  
 BA 14 8RH  
 England

P: (Phone) 01373 824242

The information on the [Erudus System](#) has been supplied by the manufacturers of the products and, whilst the owners of the Erudus System take steps to ensure the information is regularly updated, they give no warranty and no guarantee that the information is accurate. Product information and ingredients may change, please always read product labels carefully in addition to using the information provided by Erudus.

We do not accept liability for any inaccuracies or incorrect information contained on this site.  
 Please visit <http://www.erudus.com/terms-and-conditions> for full terms and conditions.