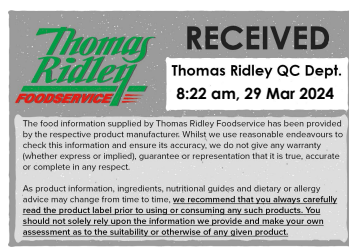


Changed Mar 28, 2024 15:36

Reviewed Mar 28, 2024 15:36

Erudus ID 8a00beaa17074c4a92d8325bdc8f0762

Version 2.0



Thomas Ridley
FOODSERVICE

RECEIVED
Thomas Ridley QC Dept.
8:22 am, 29 Mar 2024

The food information supplied by Thomas Ridley Foodservice has been provided by the respective product manufacturer. Whilst we use reasonable endeavours to check this information and ensure its accuracy, we do not give any warranty (whether express or implied, guarantee or representation that it is true, accurate or complete in any respect).

As product information, ingredients, nutritional guides and dietary or allergy advice may change from time to time, we recommend that you always carefully read the product label prior to using or consuming any such products. You should not solely rely upon the information we provide and make your own assessment as to the suitability or otherwise of any given product.



05049

Coca-Cola Zero Sugar 1.75L x6

Coca-cola Zero Sugar 6x1.79kg

PRODUCT DESCRIPTION

Coca-Cola Zero Sugar 1.75L x6 PET

Brand	Coca-Cola
Manufacturer Product Code	415691
Product Type	Drink
Product Category	Drinks - General
Storage Type	Ambient
Erudus ID	8a00beaa17074c4a92d8325bdc8f0762
Specification Type	Drinks



Inner Component GTIN	5449000080806
Outer Case GTIN	5017726160173



INGREDIENTS

Ingredient Declaration

Ingredients: Carbonated Water, Colour (E150d), Acid (Phosphoric Acid), Sweeteners (Aspartame, Acesulfame-K, Enzymatically Produced Steviol Glycosides), Natural Flavourings, Caffeine Flavouring, Acidity Regulator (Sodium Citrates).

ALLERGENS

Product Contains:

Celery/Celeriac	No	Mustard	No
Cereals Containing Gluten	No	Nuts (Tree)	No
Barley	No	Almond nuts	No
Oats	No	Brazil nuts	No
Rye	No	Cashew nuts	No
Wheat (including Spelt and Khorasan)	No	Hazelnuts	No
Crustacea	No	Macadamia (Queensland) nuts	No
Eggs	No	Pecan nuts	No
Fish	No	Pistachio nuts	No
Lupin	No	Walnuts	No
Milk	No	Peanuts	No
Molluscs	No	Sesame Seeds	No
		Soybeans	No
		Sulphur Dioxide and Sulphites	No

SUPPLEMENTARY INGREDIENT INFORMATION

Palm Oil	No
Hydrogenated Vegetable Oil/Fat	No
GM Protein/DNA	No

ADDITIVES

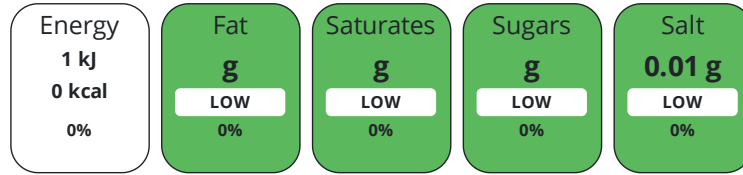
Product Contains:

Artificial Antioxidants	No	Artificial Flavourings	No
Artificial Colours	Yes	Artificial Preservatives	Yes
Artificial Flavour Enhancers	No	Artificial Sweeteners	Yes
Vegan Diet	Suitable for	Vegetarian Diet	Suitable for
Halal Diet	Suitable for	Kosher Diet	Suitable for

DIET
SUITABILITY

NUTRITIONAL
INFORMATION

Each 100g/ml portion contains:



of your reference intake.

Typical values per 100g/ml : Energy 0kcal / 1kj

Nutrient	per 100ml	RI per 100ml
Energy (kJ)	1.3 kJ	0%
Energy (kcal)	0.3 kcal	0%
Fat	0 g	0%
of which Saturates	0 g	0%
Carbohydrate	0 g	0%
of which Sugars	0 g	0%
Protein	0 g	0%
Salt	0.01 g	0%

SUPPLEMENTARY
NUTRITIONAL
INFORMATION

HFSS (HIGH IN
FAT, SALT AND
SUGAR)

HFSS Status	No
HFSS Score	0

HANDLING &
STORAGE
INFORMATION

Directions For Use

Best served chilled.

Storage Instructions

Store in a cool dry place.

Shelf Life from Time of Production	180 Days	Exempt From Shelf Life Labelling	No
---	----------	---	----

ORIGIN

Product Country of Origin/Place of Provenance	Great Britain
--	---------------

PRODUCT
CHARACTERISTICS
CONFIGURATION

Standards Testing	
Case Configuration	Inner Pack Configuration
Total Quantity of Inner Components in Outer Case	6 Units
Is the Outer Case Splittable?	No

PRODUCT WEIGHTS

Inner Component	
Inner Component Weight	1.79 kg
Outer Case	
Outer Case Gross Weight	10.77 kg
Outer Case Net Weight	10.48 kg

PRODUCT DIMENSIONS

Inner Component	
Inner Component Depth	98 mm
Inner Component Width	333 mm
Inner Component Height	98 mm
Outer Case	
Outer Case Depth	293 mm
Outer Case Width	195 mm
Outer Case Height	339 mm

PALLET INFORMATION

Quantity of Cases Per Pallet Layer	20 Cases	Pallet Height	1.52 MTR
Quantity of Layers Per Pallet	4 Layers	Pallet Gross Weight	891.2 kg
Quantity of Cases Per Pallet	80 Cases		

PACKAGING

Inner Component Packaging						
Type	Materials	Weight	Recycled Plastic %	Recyclable	Returnable	Composite
Bottle	Plastic	43.16 g	- %			
Outer Case Packaging						
Type	Materials	Weight	Recycled Plastic %	Recyclable	Returnable	Composite
Case	Plastic	21.86 g	- %			
Case	Paper/Cardboard	0.64 g	- %			

OTHER INFORMATION CONTACT INFORMATION

Address	Technical Contact
Coca-Cola	Data Queries
Coca-Cola Europacific Partners Great Britain Limited	npidataexchange@ccep.com
Pemberton House, Bakers Road	
Uxbridge	
UB8 1EZ	
United Kingdom	
P. (Phone) 08081000000	

The information on the [Erudus System](#) has been supplied by the manufacturers of the products and, whilst the owners of the Erudus System take steps to ensure the information is regularly updated, they give no warranty and no guarantee that the information is accurate. Product information and ingredients may change, please always read product labels carefully in addition to using the information provided by Erudus.

We do not accept liability for any inaccuracies or incorrect information contained on this site. Please visit <http://www.erudus.com/terms-and-conditions> for full terms and conditions.