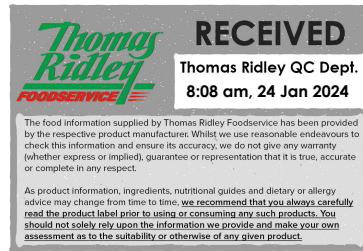


Changed Jan 23, 2024 12:26

Reviewed Jan 23, 2024 12:26

Erudus ID f2570d1310be4c9db5e9337592205ad6

Version 2.0



Thomas Ridley
FOODSERVICE

RECEIVED
Thomas Ridley QC Dept.
8:08 am, 24 Jan 2024

The food information supplied by Thomas Ridley Foodservice has been provided by the respective product manufacturers. Whilst we use reasonable endeavours to check this information and ensure its accuracy, we do not give any warranty (whether express or implied), guarantee or representation that it is true, accurate or complete in any respect.

As product information, ingredients, nutritional guides and dietary or allergy advice may change from time to time, we recommend that you always carefully read the product label prior to using or consuming any such products. You should not solely rely upon the information we provide and make your own assessment as to the suitability or otherwise of any given product.



Vanilla Flavour Thick Milkshake Mix 1x

Shmoo vanilla mix 1.8kgs

PRODUCT DESCRIPTION

Powdered vanilla flavour milkshake mix, to make a thick shake with fresh milk

Brand	Aimia Foods Ltd
Manufacturer Product Code	VANSMP
Product Type	Drink
Product Category	Milkshakes & Flavoured Milk
Storage Type	Ambient
Erudus ID	f2570d1310be4c9db5e9337592205ad6
Specification Type	Drinks



Outer Case GTIN

799439038189



INGREDIENTS

Ingredient Declaration

Skimmed **MILK** Powder, Fructose, Sugar, Thickeners (Xanthan Gum, Carrageenan Gum, Guar Gum, Locust Bean Gum), Flavourings, Anti-Caking Agent (Silicon Dioxide).

ALLERGENS

Product Contains:

Celery/Celeriac	No	Mustard	No
Cereals Containing Gluten	No	Nuts (Tree)	No
Barley	No	Almond nuts	No
Oats	No	Brazil nuts	No
Rye	No	Cashew nuts	No
Wheat (including Spelt and Khorasan)	No	Hazelnuts	No
Crustacea	No	Macadamia (Queensland) nuts	No
Eggs	No	Pecan nuts	No
Fish	No	Pistachio nuts	No
Lupin	No	Walnuts	No
Milk	Yes	Peanuts	No
Molluscs	No	Sesame Seeds	No
		Soybeans	No
		Sulphur Dioxide and Sulphites	No

SUPPLEMENTARY INGREDIENT INFORMATION

Palm Oil	No
Hydrogenated Vegetable Oil/Fat	No
GM Protein/DNA	No

ADDITIVES

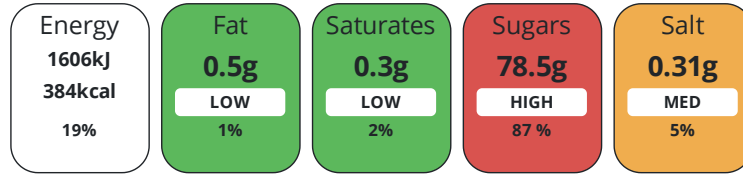
Product Contains:

Artificial Antioxidants	No	Artificial Flavourings	No
Artificial Colours	No	Artificial Preservatives	No
Artificial Flavour Enhancers	No	Artificial Sweeteners	No
Vegan Diet	No	Vegetarian Diet	Suitable for
Halal Diet	No	Kosher Diet	No

DIET
SUITABILITY

NUTRITIONAL
INFORMATION

Each 100g/ml portion contains:



of your reference intake.

Typical values per 100g/ml : Energy 384kcal / 1606kj

Nutrient	per 100g	RI per 100g
Energy (kj)	1606 kj	19%
Energy (kcal)	384 kcal	19%
Fat	0.5 g	1%
of which Saturates	0.3 g	2%
Carbohydrate	83.5 g	32%
of which Sugars	78.5 g	87%
Fibre	1.8 g	
Protein	10.5 g	21%
Salt	0.31 g	5%
Sodium	120 mg	

Source of Nutritional Information Calculation based on known values of ingredients

VITAMINS AND
MINERALS

Nutrient	per 100g	RI per 100g
Calcium	339 mg	42%

SUPPLEMENTARY
NUTRITIONAL
INFORMATION

HANDLING &
STORAGE
INFORMATION

Directions For Use

Pour ice cold semi-skimmed milk up to line on 13/22oz cup. Add 1 x 15ml or 25ml level scoop of Shmoo mix. Introduce onto machine and mix for 25 seconds. Remove cup from machine. Add cream, toppings, lid and straw. There are full instructions on each tub of Shmoo mix

Storage Instructions

Store in a cool, dry place away from direct sunlight

Shelf Life from Time of Production	547 Days	Exempt From Shelf Life Labelling	No
---	----------	---	----



Other Accreditation

NA

ORIGIN

Product Country of Origin/Place of United Kingdom

Provenance

Additional Origin Details

UK

PRODUCT
CHARACTERISTICS

Standards Testing

Do you undertake trend analysis of microbiological results? No

Is shelf life testing undertaken? No

ORGANOLEPTICS

Appearance Cream colour granular powder.

Aroma Creamy, rich sweet vanilla.

Taste Creamy, rich sweet vanilla.

Texture Fairly thick, but flows.

HAZARD CONTROLS

Metal Detection Yes

Sieving Yes

CONFIGURATION

Case Configuration

Inner Pack Configuration

Total Quantity of Inner Components in Outer Case 1 Units

Is the Outer Case Splittable? No

PRODUCT
WEIGHTS

Inner Component

Outer Case

Outer Case Gross Weight 1.94 kg

Outer Case Net Weight 1.8 kg

PRODUCT
DIMENSIONS

Inner Component

Inner Component Depth 0 mm

Inner Component Width 0 mm

Inner Component Height 0 mm

Outer Case

Outer Case Depth 160 mm

Outer Case Width 160 mm

Outer Case Height 165 mm

PALLET
INFORMATION

Quantity of Cases Per Pallet Layer 36 Cases

Pallet Height 1.1 MTR

Quantity of Layers Per Pallet 6 Layers

Pallet Gross Weight 508 kg

Quantity of Cases Per Pallet 216 Cases

PACKAGING

Outer Case Packaging

Type	Materials	Weight	Recycled Plastic %	Recyclable	Returnable	Composite
Can	Paper/Cardboard	138 g	- %			
Can	Aluminium	6 g	- %			

OTHER
INFORMATION

Manufacturer Comments

NA

CONTACT
INFORMATION

Address

Aimia Foods Ltd
Penny Lane
Haydock
Merseyside
WA11 0QZ
England

Technical Contact

Sophie Wall
Head of Technical
sophie.wall@aimiafoods.com

P: (Phone) 01942 272900

P: (Phone) 01942272900

The information on the [Erudus System](#) has been supplied by the manufacturers of the products and, whilst the owners of the Erudus System take steps to ensure the information is regularly updated, they give no warranty and no guarantee that the information is accurate. Product information and ingredients may change, please always read product labels carefully in addition to using the information provided by Erudus.

We do not accept liability for any inaccuracies or incorrect information contained on this site.
Please visit <http://www.erudus.com/terms-and-conditions> for full terms and conditions.