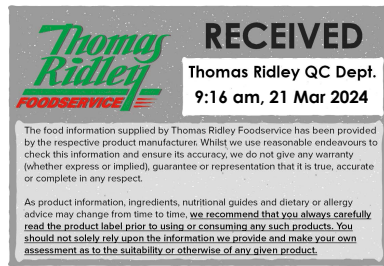


Changed Mar 20, 2024 11:57

Reviewed Mar 20, 2024 11:57

Erudus ID 08f352a0904f4928992104ae84f9e0a2

Version 3.0



**Thomas Ridley**  
FOODSERVICE

**RECEIVED**  
Thomas Ridley QC Dept.  
9:16 am, 21 Mar 2024

The food information supplied by Thomas Ridley Foodservice has been provided by the respective product manufacturer. Whilst we use reasonable endeavours to check this information and ensure its accuracy, we do not give any warranty (whether express or implied), guarantee or representation that it is true, accurate or complete in any respect.

As product information, ingredients, nutritional guides and dietary or allergy advice may change from time to time, we recommend that you always carefully read the product label prior to using or consuming any such products. You should not solely rely upon the information we provide and make your own assessment as to the suitability or otherwise of any given product.



05098

# SOURDOUGH SABOROSO FLATBREAD

Sourdough Saboroso Flatbread 25x130g

## PRODUCT DESCRIPTION

Frozen, fully baked flatbread with fermented flavour. Suitable for topping and dipping.

<b>Brand</b>	Speciality Breads Ltd
<b>Manufacturer Product Code</b>	FBFL01
<b>Product Type</b>	Food
<b>Product Category</b>	Bread - Other
<b>Storage Type</b>	Frozen
<b>Erudus ID</b>	08f352a0904f4928992104ae84f9e0a2
<b>Specification Type</b>	Bakery Products



**Outer Case GTIN** 5032633140018



## INGREDIENTS

### Ingredient Declaration

WHEAT Flour (Flour (WHEAT Flour, Calcium, Iron, Niacin, Thiamin)), Water, Extra Virgin Rapeseed Oil, Fermented WHEAT Flour, Salt (Salt, Anti-caking Agent (Sodium Ferrocyanide E535), Yeast, Caster Sugar, Bread Improver (WHEAT flour (with Calcium, Iron, Niacin, Thiamin), Flour Treatment Agent Ascorbic Acid)), Deactivated Yeast.

## ALLERGENS

Product Contains:

<b>Celery/Celeriac</b>	No	<b>Mustard</b>	No
<b>Cereals Containing Gluten</b>	Yes	<b>Nuts (Tree)</b>	No
<b>Barley</b>	May Contain	<b>Almond nuts</b>	No
<b>Oats</b>	No	<b>Brazil nuts</b>	No
<b>Rye</b>	May Contain	<b>Cashew nuts</b>	No
<b>Wheat (including Spelt and Khorasan)</b>	Yes	<b>Hazelnuts</b>	No
<b>Crustacea</b>	No	<b>Macadamia (Queensland) nuts</b>	No
<b>Eggs</b>	May Contain	<b>Pecan nuts</b>	No
<b>Fish</b>	No	<b>Pistachio nuts</b>	No
<b>Lupin</b>	No	<b>Walnuts</b>	No
<b>Milk</b>	May Contain	<b>Peanuts</b>	No
<b>Molluscs</b>	No	<b>Sesame Seeds</b>	No
		<b>Soybeans</b>	No
		<b>Sulphur Dioxide and Sulphites</b>	No

Risk Source:

## SUPPLEMENTARY INGREDIENT INFORMATION

<b>Palm Oil</b>	Yes
<b>Hydrogenated Vegetable Oil/Fat</b>	No
<b>GM Protein/DNA</b>	No

ADDITIVES

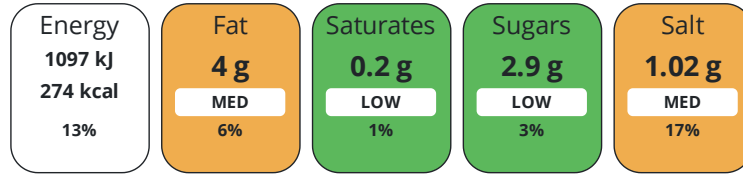
Product Contains:

<b>Artificial Antioxidants</b>	No	<b>Artificial Flavourings</b>	No
<b>Artificial Colours</b>	No	<b>Artificial Preservatives</b>	No
<b>Artificial Flavour Enhancers</b>	No	<b>Artificial Sweeteners</b>	No
<b>Vegan Diet</b>	Suitable for	<b>Vegetarian Diet</b>	Suitable for
<b>Halal Diet</b>	No	<b>Kosher Diet</b>	No

DIET  
SUITABILITY

NUTRITIONAL  
INFORMATION

Each 100g/ml portion contains:



of your reference intake.

Typical values per 100g/ml : Energy 274kcal / 1097kJ

Nutrient	per 100g	RI per 100g
<b>Energy (kJ)</b>	1096.5 kJ	13%
<b>Energy (kcal)</b>	274.4 kcal	14%
<b>Fat</b>	4 g	6%
of which Saturates	0.2 g	1%
of which Mono-unsaturates	1.8 g	
of which Polyunsaturates	0.9 g	
<b>Carbohydrate</b>	51.4 g	20%
of which Sugars	2.9 g	3%
of which Starch	0 g	
<b>Fibre</b>	2.8 g	
<b>Protein</b>	9 g	18%
<b>Salt</b>	1.02 g	17%
<b>Sodium</b>	401 mg	

VITAMINS AND  
MINERALS

Nutrient	per 100g	RI per 100g
<b>Folate/Folic Acid</b>	6.25 µg	3%
<b>Calcium</b>	1.18 mg	0%
<b>Iron</b>	0 mg	0%
<b>Zinc</b>	0 mg	0%

SUPPLEMENTARY  
NUTRITIONAL  
INFORMATION

<b>Cholesterol per 100 g/ml (UK/FR)</b>	0 g
<b>Trans Fats per 100 g/ml</b>	0 g

HFSS (HIGH IN  
FAT, SALT AND  
SUGAR)

<b>HFSS Status</b>	Yes
--------------------	-----

HANDLING &  
STORAGE  
INFORMATION

**Directions For Use**

FULLY BAKED. DEFROST INSIDE FOOD-SAFE PLASTIC BAG AT ROOM TEMPERATURE UNTIL COMPLETELY THAWED For best results toast lightly on a griddle pan.

**Storage Instructions**

FROZEN. STORE AT -18°C. DO NOT RE-FREEZE.

<b>Shelf Life from Time of Production</b>	365 Days	<b>Exempt From Shelf Life Labelling</b>	No
---	----------	---	----

ACCREDITATIONS/  
CERTIFICATIONS/  
ASSURANCE  
SCHEMES  
ORIGIN

<b>BRCGS Certified</b>		<b>Red Tractor</b>	
------------------------	--	--------------------	--

<b>Roundtable of Sustainable Palm Oil (RSPO)</b>	
--	--

<b>Product Country of Origin/Place of Provenance</b>	United Kingdom
--	----------------

**Additional Origin Details**

n/a

PRODUCT  
CHARACTERISTICS

Standards Testing			
<b>Do you undertake trend analysis of microbiological results?</b>	Yes	<b>Is shelf life testing undertaken?</b>	Yes

CONFIGURATION

Case Configuration		Inner Pack Configuration	
--------------------	--	--------------------------	--

<b>Total Quantity of Inner Components in Outer Case</b>	25 Units
---	----------

<b>Is the Outer Case Splittable?</b>	No
--------------------------------------	----

PRODUCT  
WEIGHTS

Inner Component	
-----------------	--

<b>Variable Weight Consumer Item</b>	No
--------------------------------------	----

<b>Inner Component Weight</b>	130 g
-------------------------------	-------

<b>Net Drained Weight</b>	0 g
---------------------------	-----

Outer Case	
------------	--

<b>Outer Case Gross Weight</b>	3.5 kg
--------------------------------	--------

<b>Outer Case Net Weight</b>	0.25 kg
------------------------------	---------

PRODUCT  
DIMENSIONS

Inner Component	
-----------------	--

<b>Inner Component Depth</b>	300 mm
------------------------------	--------

<b>Inner Component Width</b>	230 mm
------------------------------	--------

<b>Inner Component Height</b>	232 mm
-------------------------------	--------

Outer Case	
------------	--

<b>Outer Case Depth</b>	233 mm
-------------------------	--------

<b>Outer Case Width</b>	303 mm
-------------------------	--------

<b>Outer Case Height</b>	239 mm
--------------------------	--------

PALLET  
INFORMATION

<b>Quantity of Cases Per Pallet Layer</b>	16 Cases	<b>Pallet Height</b>	1.85 MTR
---	----------	----------------------	----------

<b>Quantity of Layers Per Pallet</b>	7 Layers	<b>Pallet Gross Weight</b>	403.52 kg
--------------------------------------	----------	----------------------------	-----------

<b>Quantity of Cases Per Pallet</b>	112 Cases
-------------------------------------	-----------

PACKAGING

Inner Component Packaging						
---------------------------	--	--	--	--	--	--

Type	Materials	Weight	Recycled Plastic %	Recyclable	Returnable	Composite
Bag	Plastic	26 g	- %			

Outer Case Packaging						
----------------------	--	--	--	--	--	--

Type	Materials	Weight	Recycled Plastic %	Recyclable	Returnable	Composite
Case	Paper/Cardboard	231 g	- %			

Transport Packaging

Type	Materials	Weight	Recycled Plastic %	Recyclable	Returnable	Composite
Other	Plastic	525 g	- %		Yes	
Other	Paper/Cardboard	110 g	- %		Yes	

OTHER INFORMATION

<b>Intrastat/Taric Code</b>	1905
-----------------------------	------

CONTACT INFORMATION

Address  
 Speciality Breads Ltd  
 Unit J2 Channel Road  
 Westwood Industrial Estate  
 Margate  
 Kent  
 CT9 4JS  
 England

P: (Phone) 01843 209442

The information on the [Erudus System](#) has been supplied by the manufacturers of the products and, whilst the owners of the Erudus System take steps to ensure the information is regularly updated, they give no warranty and no guarantee that the information is accurate. Product information and ingredients may change, please always read product labels carefully in addition to using the information provided by Erudus.

We do not accept liability for any inaccuracies or incorrect information contained on this site.  
 Please visit <http://www.erudus.com/terms-and-conditions> for full terms and conditions.