

Changed Jun 02, 2022 09:57

Erudus ID 746cd8ffcca24d9cab2c9f7890ae21b7

Version 1.0

05333

# Bebo Soft Spread 6x2 kgs

Soft Spread 6x

## PRODUCT DESCRIPTION

55% vegetable fat spread

<b>Brand</b>	Smilde Food Group Ltd (UK)
<b>Manufacturer Product Code</b>	112001
<b>Product Type</b>	Food
<b>Product Category</b>	Fats and Yellow Fats
<b>Storage Type</b>	Chilled
<b>Erudus ID</b>	746cd8ffcca24d9cab2c9f7890ae21b7
<b>Specification Type</b>	Legacy
<b>Inner Component GTIN</b>	8710472012204
<b>Outer Case GTIN</b>	8710472012204



## INGREDIENTS

### Ingredient Declaration

Vegetable oils (rapeseed, palm kernal, coconut, sunflower oil), water, salt,emulsifier: mono and diglycerides of fatty acids. wheypowder (**MILK**), butter**MILK** powder,preservative: potassium sorbate. acid: citric acid. natural flavour, colour: beta carotene. vitamins: A, D.

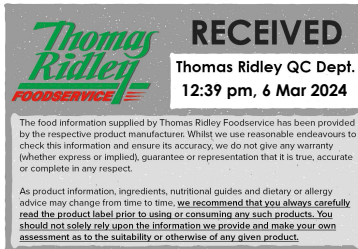
## ALLERGENS

Product Contains:

<b>Celery/Celeriac</b>	No	<b>Mustard</b>	No
<b>Cereals Containing Gluten</b>	No	<b>Nuts (Tree)</b>	No
<b>Barley</b>	No	<b>Almond nuts</b>	No
<b>Oats</b>	No	<b>Brazil nuts</b>	No
<b>Rye</b>	No	<b>Cashew nuts</b>	No
<b>Wheat (including Spelt and Khorasan)</b>	No	<b>Hazelnuts</b>	No
<b>Gluten content &lt;20ppm</b>	Yes	<b>Macadamia (Queensland) nuts</b>	No
<b>Crustacea</b>	No	<b>Pecan nuts</b>	No
<b>Eggs</b>	No	<b>Pistachio nuts</b>	No
<b>Fish</b>	No	<b>Walnuts</b>	No
<b>Lupin</b>	No	<b>Peanuts</b>	No
<b>Milk</b>	Yes	<b>Sesame Seeds</b>	No
<b>Molluscs</b>	No	<b>Soybeans</b>	No
		<b>Sulphur Dioxide and Sulphites</b>	No

## SUPPLEMENTARY INGREDIENT INFORMATION

<b>Palm Oil</b>	Yes
<b>Hydrogenated Vegetable Oil/Fat</b>	No
<b>GM Protein/DNA</b>	No



ADDITIVES

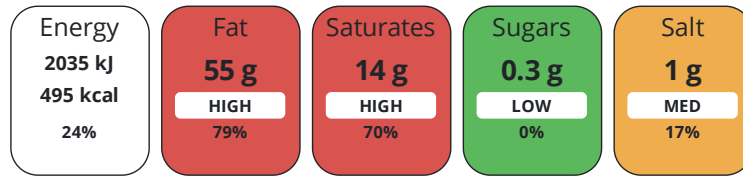
Product Contains:

<b>Artificial Antioxidants</b>	No	<b>Artificial Flavourings</b>	No
<b>Artificial Colours</b>	No	<b>Artificial Preservatives</b>	No
<b>Artificial Flavour Enhancers</b>	No	<b>Artificial Sweeteners</b>	No
<b>Suitable for Coeliacs</b>	Yes	<b>Halal Diet</b>	Suitable for
<b>Kosher Diet</b>	Suitable for	<b>Vegetarian Diet</b>	Suitable for
<b>Vegan Diet</b>	No		

DIET SUITABILITY

NUTRITIONAL INFORMATION

Each 100g/ml portion contains:



of your reference intake.

Typical values per 100g/ml : Energy 495kcal / 2035kj

Nutrient	per 100g/ml	RI per 100g/ml
<b>Energy (kJ)</b>	2035 kJ	24%
<b>Energy (kcal)</b>	495 kcal	25%
<b>Fat</b>	55 g	79%
of which Saturates	14 g	70%
of which Mono-unsaturates	28 g	
of which Polyunsaturates	13 g	
<b>Carbohydrate</b>	0.3 g	0%
of which Sugars	0.3 g	0%
of which Polyols	0 g	
of which Starch	0 g	
<b>Fibre</b>	0 g	
<b>Protein</b>	0.1 g	0%
<b>Salt</b>	1 g	17%
<b>Sodium</b>	250 mg	

VITAMINS AND MINERALS

Nutrient	per 100g/ml	RI per 100g/ml
<b>Vitamin A</b>	800 µg	100%

SUPPLEMENTARY NUTRITIONAL INFORMATION

HFSS (HIGH IN FAT, SALT AND SUGAR)

<b>HFSS Status</b>	Yes
--------------------	-----

HANDLING & STORAGE INFORMATION

**Directions For Use**  
For baking, frying or spreading - use as required

**Storage Instructions**  
Keep Refrigerated

**Shelf Life from Time of Production** 150 Days

**Other Accreditation**

IFS Higher Level

ORIGIN

**Product Country of Origin/Place of** Netherlands (the)

**Provenance**

PRODUCT  
CHARACTERISTICS

Standards Testing

**Do you undertake trend analysis of microbiological results?** Yes **Is shelf life testing undertaken?** Yes

Microbiological Standards

Organism	Description	Frequency	Target	Maximum	Sample (g or ml)
Enterobacteriaceae (cfu/g or ml)		Every Batch	<30	30	-
Salmonella (cfu/g or ml)	absent in 25g	Every Batch	<0	0	-
Yeast (cfu/g or ml)		Every Batch	<100	100	-
Moulds (cfu/g or ml)		Every Batch	<1	1	-
Aerobic Colony Count (ACC) (cfu/g or ml)		Every Batch	<2000	2000	-

Analytical Standards

Test	Description	Frequency	Target	Range	Sample (g or ml)
Peroxide Value (PV)		Every Batch	<1.5	0 to 1.5	-
pH		Every Batch	<5	4 to 5	-

CONFIGURATION

Case Configuration

Inner Pack Configuration

**Total Quantity of Inner Components in** 6 Units

**Outer Case**

**Is the Outer Case Splittable?** No

PRODUCT  
WEIGHTS

Inner Component

**Variable Weight Consumer Item** No

**Weight/Volume**

2 kgs

Outer Case

**Outer Case Gross Weight** 12.8 kg

**Outer Case Net Weight** 12 kg

PRODUCT  
DIMENSIONS

Inner Component

**Inner Component Depth** 95 mm

**Inner Component Width** 33 mm

**Inner Component Height** 33 mm

Outer Case

**Outer Case Depth** 570 mm

**Outer Case Width** 195 mm

**Outer Case Height** 199 mm

PALLET  
INFORMATION

<b>Quantity of Cases Per Pallet Layer</b>	10 Cases	<b>Pallet Height</b>	1.7 MTR
<b>Quantity of Layers Per Pallet</b>	7 Layers	<b>Pallet Gross Weight</b>	435 kg
<b>Quantity of Cases Per Pallet</b>	70 Cases		

PACKAGING

Inner Component Packaging

Type	Materials	Weight	Recycled Plastic %	Recyclable	Returnable	Composite
Tub	Plastic	0.06 g	- %			

Outer Case Packaging

Type	Materials	Weight	Recycled Plastic %	Recyclable	Returnable	Composite
Case	Plastic	336 g	- %			
Case	Paper/Cardboard	451 g	- %			

OTHER  
INFORMATION  
CONTACT  
INFORMATION

Address

Smilde Food Group Ltd (UK)  
The Mallings  
112 Malling Street  
Lewes  
BN7 2RG  
England

P: (Phone) 07450 200063

The information on the [Erudus System](#) has been supplied by the manufacturers of the products and, whilst the owners of the Erudus System take steps to ensure the information is regularly updated, they give no warranty and no guarantee that the information is accurate. Product information and ingredients may change, please always read product labels carefully in addition to using the information provided by Erudus.

We do not accept liability for any inaccuracies or incorrect information contained on this site.  
Please visit <http://www.erudus.com/terms-and-conditions> for full terms and conditions.