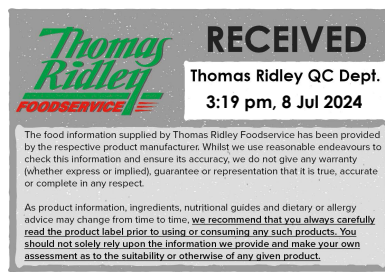


Changed Jul 08, 2024 13:31

Reviewed Jul 08, 2024 13:31

Erudus ID 3875354da9d045dbb15b8479a93f9450

Version 2.0



05362

# Eager Cranberry Juice Drink

Cranberry Juice Drink 8x1litre

## PRODUCT DESCRIPTION

Cranberry juice drink in 1L square carton with swift cap, 8x1L case.

<b>Brand</b>	Refresco Gerber UK
<b>Manufacturer Product Code</b>	EAQCJD1001UG08C
<b>Product Type</b>	Drink
<b>Product Category</b>	Juices and Cordials
<b>Storage Type</b>	Ambient
<b>Erudus ID</b>	3875354da9d045dbb15b8479a93f9450
<b>Specification Type</b>	Drinks
<b>Inner Component GTIN</b>	5060113200099
<b>Outer Case GTIN</b>	05060113200273



## INGREDIENTS

### Ingredient Declaration

Apple juice from concentrate, cranberry juice from concentrate (26%), cranberry puree (1.5%), natural flavour.

## ALLERGENS

Product Contains:

<b>Celery/Celериac</b>	No	<b>Mustard</b>	No
<b>Cereals Containing Gluten</b>	No	<b>Nuts (Tree)</b>	No
<b>Barley</b>	No	<b>Almond nuts</b>	No
<b>Oats</b>	No	<b>Brazil nuts</b>	No
<b>Rye</b>	No	<b>Cashew nuts</b>	No
<b>Wheat (including Spelt and Khorasan)</b>	No	<b>Hazelnuts</b>	No
<b>Crustacea</b>	No	<b>Macadamia (Queensland) nuts</b>	No
<b>Eggs</b>	No	<b>Pecan nuts</b>	No
<b>Fish</b>	No	<b>Pistachio nuts</b>	No
<b>Lupin</b>	No	<b>Walnuts</b>	No
<b>Milk</b>	No	<b>Peanuts</b>	No
<b>Molluscs</b>	No	<b>Sesame Seeds</b>	No
		<b>Soybeans</b>	No
		<b>Sulphur Dioxide and Sulphites</b>	No

## SUPPLEMENTARY INGREDIENT INFORMATION

<b>Palm Oil</b>	No
<b>Hydrogenated Vegetable Oil/Fat</b>	No
<b>GM Protein/DNA</b>	No

## ADDITIVES

Product Contains:

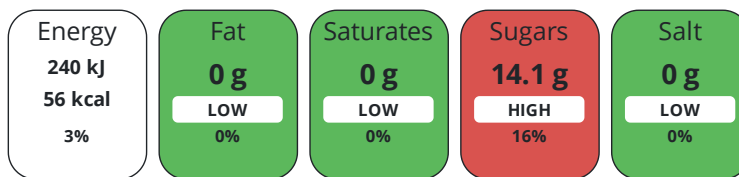
<b>Artificial Antioxidants</b>	No	<b>Artificial Flavourings</b>	No
<b>Artificial Colours</b>	No	<b>Artificial Preservatives</b>	No
<b>Artificial Flavour Enhancers</b>	No	<b>Artificial Sweeteners</b>	No

DIET  
SUITABILITY

<b>Vegan Diet</b>	Suitable for	<b>Vegetarian Diet</b>	Suitable for
<b>Halal Diet</b>	No	<b>Kosher Diet</b>	No

NUTRITIONAL  
INFORMATION

Each 100g/ml portion contains:



of your reference intake.

Typical values per 100g/ml : Energy 56kcal / 240kJ

Nutrient	per 100ml	RI per 100ml
<b>Energy (kJ)</b>	240 kJ	3%
<b>Energy (kcal)</b>	56 kcal	3%
<b>Fat</b>	0 g	0%
of which Saturates	0 g	0%
<b>Carbohydrate</b>	14.1 g	5%
of which Sugars	14.1 g	16%
<b>Fibre</b>	0 g	
<b>Protein</b>	0 g	0%
<b>Salt</b>	0 g	0%

SUPPLEMENTARY  
NUTRITIONAL  
INFORMATION

**Non Milk Extrinsic Sugars per 100 g/ml** 14.1 g

HANDLING &  
STORAGE  
INFORMATION

**Directions For Use**

Best served chilled and shake well before opening.

**Storage Instructions**

Store at room temperature. Once opened store in the fridge and drink within 5 days.

**Storage Instructions After Opening**

Once opened store in the fridge and drink within 5 days.

**Shelf Life from Time of Production** 420 Days

**Shelf Life From Opening** 5 Days

ACCREDITATIONS/  
CERTIFICATIONS/  
ASSURANCE  
SCHEMES  
ORIGIN

**BRCGS Certified**

**Product Country of Origin/Place of** United Kingdom

**Provenance**

**Additional Origin Details**

Produced in the UK. Ingredients of various origin.

PRODUCT  
CHARACTERISTICS  
CONFIGURATION

Standards Testing

Case Configuration

Inner Pack Configuration

**Variable Inner Components in Outer Case** No

**Total Quantity of Inner Components in** 8 Units

**Outer Case**

**Is the Outer Case Splittable?** No

PRODUCT WEIGHTS

Inner Component	
<b>Inner Component Volume</b>	1 litre
<b>e mark</b>	Yes
Outer Case	
<b>Outer Case Gross Weight</b>	8.5 kg
<b>Outer Case Net Weight</b>	8 kg

PRODUCT DIMENSIONS

Inner Component	
<b>Inner Component Depth</b>	72 mm
<b>Inner Component Width</b>	70 mm
<b>Inner Component Height</b>	214 mm
Outer Case	
<b>Outer Case Depth</b>	300 mm
<b>Outer Case Width</b>	156 mm
<b>Outer Case Height</b>	218 mm

PALLET INFORMATION

<b>Quantity of Cases Per Pallet Layer</b>	23 Cases	<b>Pallet Height</b>	1.3 MTR
<b>Quantity of Layers Per Pallet</b>	5 Layers		
<b>Quantity of Cases Per Pallet</b>	115 Cases		

PACKAGING

Inner Component Packaging						
Type	Materials	Weight	Recycled Plastic %	Recyclable	Returnable	Composite
Cap	Plastic	2.7 g	0 %	Yes	No	Yes
Tetra Pack	Paper/Cardboard / Paperboard	28.4 g	- %	Yes	No	Yes
Outer Case Packaging						
Type	Materials	Weight	Recycled Plastic %	Recyclable	Returnable	Composite
Shrink Wrap	Plastic / LDPE (Low Density Polyethylene)	10 g	30 %	Yes	No	No
Tray	Paper/Cardboard / Corrugated	109 g	- %	Yes	No	No
Transport Packaging						
Type	Materials	Weight	Recycled Plastic %	Recyclable	Returnable	Composite
Other	Plastic / LDPE (Low Density Polyethylene)	220 g	30 %	Yes	No	No
Layer Card	Paper/Cardboard / Corrugated	1925 g	- %	Yes	No	No

OTHER INFORMATION

CONTACT  
INFORMATION

Address

Refresco Gerber UK  
Citrus Grove  
Side Ley  
Kegworth  
Derbyshire  
DE74 2FJ  
England

P: (Phone) 01509674915

Complaints Contact

Jonathan Kidsley  
Consumer Care Department  
consumer.services@refresco.com

P: (Phone) 01509 680540

Technical Contact

Loreta Jusciute  
Customer Technical Administrator  
loreta.jusciute@refresco.com

P: (Phone) 01278441600

Commercial Contact

Joe Major  
Head of Marketing - UK  
joe.major@refresco.com

P: (Phone) 01278441600

The information on the [Erudus System](#) has been supplied by the manufacturers of the products and, whilst the owners of the Erudus System take steps to ensure the information is regularly updated, they give no warranty and no guarantee that the information is accurate. Product information and ingredients may change, please always read product labels carefully in addition to using the information provided by Erudus.

We do not accept liability for any inaccuracies or incorrect information contained on this site.  
Please visit <http://www.erudus.com/terms-and-conditions> for full terms and conditions.