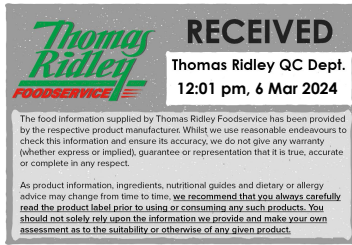


Changed Mar 06, 2024 11:11

Reviewed Mar 06, 2024 11:11

Erudus ID 0398c15b56104e96b55ad411f5676140

Version 2.0



05372

Black Forest Gateau 2 Layer Gateau

Black Forest Gateau 2 Layer Gateau 6x1134g

PRODUCT DESCRIPTION

Two layers of fluffy chocolate sponge sandwiched with cherry sauce, covered with cream and topped with a piped crown of cream rosettes with a cherry sauce center studded with whole cherries. Decorated on all sides with chocolate flavour chips. Solid

Brand	Mademoiselle Desserts (Taunton)
Manufacturer Product Code	F00011 (7887)
Product Type	Food
Product Category	Desserts
Storage Type	Frozen
Erudus ID	0398c15b56104e96b55ad411f5676140
Specification Type	Bakery Products



Inner Component GTIN	5010823105443
Outer Case GTIN	05010823522134



INGREDIENTS

Ingredient Declaration

Cream (MILK) (18%), Sugar, WHEAT Flour (with Calcium Carbonate, Iron, Niacin, Thiamin), EGG, Water, Cherry Sauce (8.7%) [Water, Sour Cherries, Sugar, Modified Maize Starch, Gelling Agent (E440), Acidity Regulator (E330), Kirsch, Natural Flavouring], Cherries (8.7%), Glucose Syrup, Fat Reduced Cocoa Powder, Humectant (E422), WHEAT Flour, Margarine [Palm Oil, Rapeseed Oil, Water, Emulsifier (E471)], Palm Oil, Dextrose, Cherry Concentrate, Modified Maize Starch, Raising Agents (E450i, E500ii), Emulsifiers (E471, E475, SOYA Lecithin), Acidity Regulators (E525, E330), Dried BUTTERMILK, Colours (E163, E100), Natural Flavouring, Stabilisers (E415, E407).

ALLERGENS

Product Contains:

Celery/Celeriac	No	Mustard	No
Cereals Containing Gluten	Yes	Nuts (Tree)	May Contain
Barley	No	Almond nuts	May Contain
Oats	No	Brazil nuts	No
Rye	No	Cashew nuts	No
Wheat (including Spelt and Khorasan)	Yes	Hazelnuts	May Contain
Crustacea	No	Macadamia (Queensland) nuts	No
Eggs	Yes	Pecan nuts	No
Fish	No	Pistachio nuts	May Contain
Lupin	No	Walnuts	May Contain
Milk	Yes	Peanuts	No
Molluscs	No	Sesame Seeds	No
		Soybeans	Yes
		Sulphur Dioxide and Sulphites	No

Risk Source:

Tree Nuts (Risk Source)	Line	Almond nuts (Risk Source)	Line
Hazelnuts (Risk Source)	Line	Pistachio nuts (Risk Source)	Line
Walnuts (Risk Source)	Line		

Allergen Statement On Pack

ALLERGY ADVICE: For allergens, including cereals containing gluten, see ingredients in CAPITALS. May contain traces of nuts.

Additional Allergen Information

May contain fruit stones.

SUPPLEMENTARY
INGREDIENT
INFORMATION

Palm Oil	Yes
Hydrogenated Vegetable Oil/Fat	No
GM Protein/DNA	No

ADDITIVES

Product Contains:

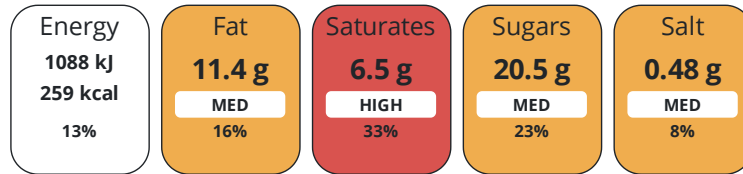
Artificial Antioxidants	No	Artificial Flavourings	No
Artificial Colours	No	Artificial Preservatives	No
Artificial Flavour Enhancers	No	Artificial Sweeteners	No

DIET
SUITABILITY

Vegan Diet	No	Vegetarian Diet	Suitable for
Halal Diet	No	Kosher Diet	No

NUTRITIONAL
INFORMATION

Each 100g/ml portion contains:



of your reference intake.

Typical values per 100g/ml : Energy 259kcal / 1088kJ

Nutrient	per 100g	RI per 100g
Energy (kJ)	1088 kJ	13%
Energy (kcal)	259 kcal	13%
Fat	11.4 g	16%
of which Saturates	6.5 g	33%
of which Mono-unsaturates	3 g	
of which Polyunsaturates	0.47 g	
Carbohydrate	36.1 g	14%
of which Sugars	20.5 g	23%
Fibre	1.17 g	
Protein	4 g	8%
Salt	0.48 g	8%
Sodium	189 mg	

Source of Nutritional Information Calculation from known/accepted datasets

SUPPLEMENTARY
NUTRITIONAL
INFORMATION

Cholesterol per 100 g/ml (UK/FR)	0.03 g
Trans Fats per 100 g/ml	0.28 g

HFSS (HIGH IN
FAT, SALT AND
SUGAR)

HFSS Status	Yes
HFSS Score	22

HANDLING &
STORAGE
INFORMATION

Directions For Use

For best results remove all packaging whilst product is still frozen and place on a serving plate. Defrost for approximately 6 hours or overnight in a refrigerator at 5°C. Alternatively remove the required number of slices from frozen product and defrost each slice on a plate at 5°C for approximately 2 hours. Once defrosted store in a refrigerator (5°C) and consume within 24 hours.

Storage Instructions

DO NOT REFREEZE ONCE DEFROSTED. STORE AT -18°C OR COLDER.

Shelf Life from Time of Production	730 Days	Exempt From Shelf Life Labelling	No
Shelf Life From Opening	1 Days		

ACCREDITATIONS/
CERTIFICATIONS/
ASSURANCE
SCHEMES



ORIGIN

Product Country of Origin/Place of United Kingdom

Provenance

Additional Origin Details

Baked by Mademoiselle Desserts, Frobisher Way, Taunton, TA2 6AB, UK Part of Mademoiselle Desserts, 14 place Georges Pompidou, 78180 Montigny le Bretonneux, France

PRODUCT
CHARACTERISTICS

Standards Testing

Do you undertake trend analysis of microbiological results?	Yes	Is shelf life testing undertaken?	Yes
--------------------------------------------------------------------	-----	------------------------------------------	-----

SUPPLEMENTARY INFORMATION

Egg Source Free-range

CONFIGURATION

Case Configuration

Inner Pack Configuration

Total Quantity of Inner Components in Outer Case 6 Units

Is the Outer Case Splittable? Yes

PRODUCT
WEIGHTS

Inner Component

Variable Weight Consumer Item No

Inner Component Weight 1134 g

e mark No

Outer Case

Outer Case Gross Weight 8.18 kg

Outer Case Net Weight 6.8 kg

PRODUCT
DIMENSIONS

Inner Component

Inner Component Depth 249 mm

Inner Component Width 249 mm

Inner Component Height 95 mm

Outer Case

Outer Case Depth 505 mm

Outer Case Width 255 mm

Outer Case Height 290 mm

PALLET
INFORMATION

Quantity of Cases Per Pallet Layer 8 Cases **Pallet Height** 1.6 MTR

Quantity of Layers Per Pallet 5 Layers **Pallet Gross Weight** 336.8 kg

Quantity of Cases Per Pallet 40 Cases

PACKAGING

Inner Component Packaging

Type	Materials	Weight	Recycled Plastic %	Recyclable	Returnable	Composite
Film	Plastic / LDPE (Low Density Polyethylene)	8 g	30 %	Yes	No	No
Cakeboard	Paper/Cardboard / Carton Board	29.7 g	- %	No	No	No
Collar	Paper/Cardboard / Carton Board	16.2 g	- %	No	No	No
Box	Paper/Cardboard / Cardboard	119 g	- %	Yes	No	No
Label	Paper/Cardboard / Paper	2.2 g	- %	No	No	No

Outer Case Packaging

Type	Materials	Weight	Recycled Plastic %	Recyclable	Returnable	Composite
Tape	Plastic / PP (Polypropylene)	2 g	0.0 %	No	No	No
Case	Paper/Cardboard / Corrugated	285 g	- %	Yes	No	No
Label	Paper/Cardboard / Paper	1.6 g	- %	No	No	No

Transport Packaging

Type	Materials	Weight	Recycled Plastic %	Recyclable	Returnable	Composite
Pallet Wrap	Plastic / LDPE (Low Density Polyethylene)	340 g	30 %	Yes	No	No
Pallet	Wood	25000 g	- %	No	Yes	No

OTHER
INFORMATION

Intrastat/Taric Code	1905907000
Commodity Code	19059070

Manufacturer Comments

Note product is manufactured in an environment that uses nuts on manufacturing and packing lines so there is a risk of cross contamination. PLEASE NOTE: Information is not available for net weight as no weight is declared on the product

CONTACT
INFORMATION

Address	Technical Contact
Mademoiselle Desserts (Taunton)	David Moran
Frobisher Way	Technical Manager
Bindon Road	d.moran@mdesserts.com
Taunton	
Somerset	P: (Phone) 01823 257922
TA2 6AB	
England	
P: (Phone) 01823 257922	
Complaints Contact	Commercial Contact
David Moran	Clare Harrison
Technical Manager	National Account Manager
d.moran@mdesserts.com	c.harrison@mdesserts.com
P: (Phone) 01823 257922	P: (Phone) 01823 257922

The information on the [Erudus System](#) has been supplied by the manufacturers of the products and, whilst the owners of the Erudus System take steps to ensure the information is regularly updated, they give no warranty and no guarantee that the information is accurate. Product information and ingredients may change, please always read product labels carefully in addition to using the information provided by Erudus.

We do not accept liability for any inaccuracies or incorrect information contained on this site.
Please visit <http://www.erudus.com/terms-and-conditions> for full terms and conditions.