

Changed Mar 28, 2024 14:17

Reviewed Mar 28, 2024 14:17

Erudus ID 66a372335f1041f2af948a51ddd921ef

Version 2.0

05485

Miso Broth Base 1kg

Miso Broth Base 2x1kg

PRODUCT DESCRIPTION

A medium brown paste with a typical flavour of Miso with added savoury notes.

Brand	Essential Cuisine Limited
Manufacturer Product Code	SW00021 - ECASMISO/4
Manufacturer Version	1
Number	
Effective Date	Jun 29, 2022
Product Type	Food
Product Category	Gravy / Bouillon
Storage Type	Ambient
Erudus ID	66a372335f1041f2af948a51ddd921ef
Specification Type	Generic
Inner Component GTIN	5029540001761
Outer Case GTIN	05029540001679



RECEIVED

Thomas Ridley QC Dept.

3:49 pm, 28 Mar 2024

The food information supplied by Thomas Ridley Foodservice has been provided by the respective product manufacturer. Whilst we use reasonable endeavours to check this information and ensure its accuracy, we do not give any warranty (whether express or implied), guarantee or representation that it is true, accurate or complete in any respect.

As product information, ingredients, nutritional guides and dietary or allergy advice may change from time to time, we recommend that you always carefully read the product label prior to using or consuming any such products. You should not solely rely upon the information we provide and make your own assessment as to the suitability or otherwise of any given product.



INGREDIENTS

Ingredient Declaration

Miso (62%) (Water, SOYA Beans, Rice, Salt, Alcohol), Water, Salt, Flavourings, Sugar, Yeast Extract, Ginger Puree, Rapeseed Oil, Onion Powder, Garlic Powder, Modified Maize Starch, Glucose Syrup, Ground Ginger.

ALLERGENS

Product Contains:

Celery/Celeriac	No	Mustard	No
Cereals Containing Gluten	No	Nuts (Tree)	No
Barley	No	Almond nuts	No
Oats	No	Brazil nuts	No
Rye	No	Cashew nuts	No
Wheat (including Spelt and Khorasan)	No	Hazelnuts	No
Crustacea	No	Macadamia (Queensland) nuts	No
Eggs	No	Pecan nuts	No
Fish	No	Pistachio nuts	No
Lupin	No	Walnuts	No
Milk	No	Peanuts	No
Molluscs	No	Sesame Seeds	No
		Soybeans	Yes
		Sulphur Dioxide and Sulphites	No

FREE FROM CLAIMS

Gluten-Free	Yes
--------------------	-----

SUPPLEMENTARY
INGREDIENT
INFORMATION

Palm Oil	No
Hydrogenated Vegetable Oil/Fat	No
GM Protein/DNA	No

ADDITIVES

Product Contains:

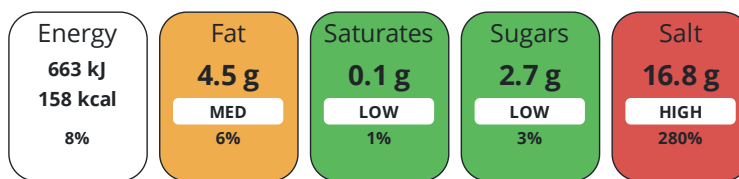
Artificial Antioxidants	No	Artificial Flavourings	Yes
Artificial Colours	No	Artificial Preservatives	No
Artificial Flavour Enhancers	No	Artificial Sweeteners	No

DIET
SUITABILITY

Vegan Diet	Suitable for	Vegetarian Diet	Suitable for
Halal Diet	No	Kosher Diet	No

NUTRITIONAL
INFORMATION

Each 100g/ml portion contains:



of your reference intake.

Typical values per 100g/ml : Energy 158kcal / 663kJ

Nutrient	per 100g	RI per 100g
Energy (kJ)	663 kJ	8%
Energy (kcal)	158 kcal	8%
Fat	4.5 g	6%
of which Saturates	0.1 g	1%
Carbohydrate	19.5 g	8%
of which Sugars	2.7 g	3%
Fibre	0.1 g	
Protein	9.8 g	20%
Salt	16.8 g	280%
Sodium	6720 mg	

SUPPLEMENTARY
NUTRITIONAL
INFORMATION

HANDLING &
STORAGE
INFORMATION

Directions For Use

To make the broth, simply add 40g of Miso Broth Base into 1 litre of boiling water. Stir until dissolved. Your Miso Broth is now ready for use.

Storage Instructions

Always reseal after use and store in a cool, dry place. Product will naturally darken over time.

Shelf Life from Time of Production	365 Days	Exempt From Shelf Life Labelling	No
---	----------	---	----

ACCREDITATIONS/
CERTIFICATIONS/
ASSURANCE
SCHEMES
ORIGIN

BRCGS Certified		Food for Life Supplier Scheme	
------------------------	--	--------------------------------------	--

Other Accreditation

Product Country of Origin/Place of United Kingdom

Provenance

Additional Origin Details

N/A

PRODUCT CHARACTERISTICS CONFIGURATION

Standards Testing

Case Configuration

Inner Pack Configuration

Total Quantity of Inner Components in Outer Case 2 Units

Outer Case

Is the Outer Case Splittable? Yes

PRODUCT WEIGHTS

Inner Component

Variable Weight Consumer Item No

Inner Component Weight 1 kg

Outer Case

Outer Case Gross Weight 2.2 kg

Outer Case Net Weight 2 kg

PRODUCT DIMENSIONS

Inner Component

Inner Component Depth 129 mm

Inner Component Width 129 mm

Inner Component Height 110 mm

Outer Case

Outer Case Depth 250 mm

Outer Case Width 120 mm

Outer Case Height 110 mm

PALLET INFORMATION

Quantity of Cases Per Pallet Layer 31 Cases

Pallet Height 1.3 MTR

Quantity of Layers Per Pallet 8 Layers

Pallet Gross Weight 581 kg

Quantity of Cases Per Pallet 248 Cases

PACKAGING

Inner Component Packaging

Type	Materials	Weight	Recycled Plastic %	Recyclable	Returnable	Composite
Tub	Plastic	45 g	- %			
Tub	Paper/Cardboard	9.8 g	- %			

Outer Case Packaging

Type	Materials	Weight	Recycled Plastic %	Recyclable	Returnable	Composite
Paper/Polyethylene	Plastic	10 g	- %			
Paper/Polyethylene	Paper/Cardboard	1 g	- %			

Transport Packaging

Type	Materials	Weight	Recycled Plastic %	Recyclable	Returnable	Composite
Other	Plastic	500 g	- %			
Other	Paper/Cardboard	5000 g	- %			
Other	Wood	30000 g	- %			

MARKETING INFORMATION

Marketing Description

A well-rounded broth base made with Miso, a traditional fermented soy, blended with a light savoury background for a perfectly balanced taste.

OTHER INFORMATION

Manufacturer Comments

N/A

CONTACT
INFORMATION

Address

Essential Cuisine Limited
Essential Cuisine Ltd
Browning Way
Winsford
Cheshire
CW7 2RH
United Kingdom

P. (Phone) 01606 541490

The information on the [Erudus System](#) has been supplied by the manufacturers of the products and, whilst the owners of the Erudus System take steps to ensure the information is regularly updated, they give no warranty and no guarantee that the information is accurate. Product information and ingredients may change, please always read product labels carefully in addition to using the information provided by Erudus.

We do not accept liability for any inaccuracies or incorrect information contained on this site.
Please visit <http://www.erudus.com/terms-and-conditions> for full terms and conditions.