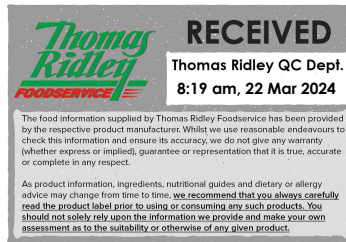


Changed Mar 21, 2024 15:17

Reviewed Mar 21, 2024 15:17

Erudus ID 1d5d8aed454248eaac5a89f61bda8017

Version 2.0



Thomas Ridley
FOODSERVICE

RECEIVED
Thomas Ridley QC Dept.
8:19 am, 22 Mar 2024

The food information supplied by Thomas Ridley Foodservice has been provided by the respective product manufacturer. Whilst we use reasonable endeavours to check this information and ensure its accuracy, we do not give any warranty (whether express or implied), guarantee or representation that it is true, accurate or complete in any respect.

As product information, ingredients, nutritional guides and dietary or allergy advice may change from time to time, we recommend that you always carefully read the product label prior to using or consuming any such products. You should not solely rely upon the information we provide and make your own assessment as to the suitability or otherwise of any given product.



05486

Monte Bello Cooking Wine Red 1.2% Vol. - 4 x 3L

Red Cooking Wine 4x3litre

PRODUCT DESCRIPTION

A blend of red wine and de-alcoholised wine from concentrate, slightly seasoned with salt

Brand	Gourmet Classic
Manufacturer Product Code	7357-242
Product Type	Food
Product Category	Condiments
Storage Type	Ambient
Erudus ID	1d5d8aed454248eaac5a89f61bda8017
Specification Type	Generic



Inner Component GTIN	5036582005701
Outer Case GTIN	05036582005718



INGREDIENTS

Ingredient Declaration

De-alcoholised Wine from Concentrate, Red Wine (10%), Grape Concentrate, Salt, Natural Flavouring, Preservative (Potassium MetabiSULPHITE)

ALLERGENS

Product Contains:

Celery/Celериac	No	Mustard	No
Cereals Containing Gluten	No	Nuts (Tree)	No
Barley	No	Almond nuts	No
Oats	No	Brazil nuts	No
Rye	No	Cashew nuts	No
Wheat (including Spelt and Khorasan)	No	Hazelnuts	No
Crustacea	No	Macadamia (Queensland) nuts	No
Eggs	No	Pecan nuts	No
Fish	No	Pistachio nuts	No
Lupin	No	Walnuts	No
Milk	No	Peanuts	No
Molluscs	No	Sesame Seeds	No
		Soybeans	No
		Sulphur Dioxide and Sulphites	Yes

Additional Allergen Information

Contains SULPHITES

SUPPLEMENTARY
INGREDIENT
INFORMATION

Palm Oil	No	Alcoholic Strength %Vol (ABV)	1.2 % Vol
Hydrogenated Vegetable Oil/Fat	No		
GM Protein/DNA	No		

ADDITIVES

Product Contains:

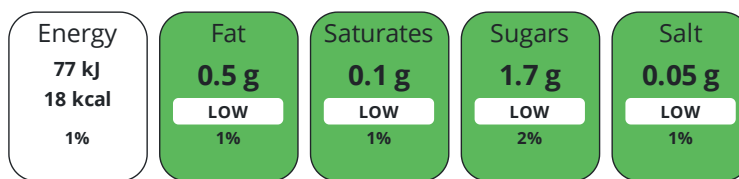
Artificial Antioxidants	No	Artificial Flavourings	No
Artificial Colours	No	Artificial Preservatives	Yes
Artificial Flavour Enhancers	No	Artificial Sweeteners	No

DIET
SUITABILITY

Vegan Diet	Suitable for	Vegetarian Diet	Suitable for
Halal Diet	No	Kosher Diet	No

NUTRITIONAL
INFORMATION

Each 100g/ml portion contains:



of your reference intake.

Typical values per 100g/ml : Energy 18kcal / 77kJ

Nutrient	per 100ml	RI per 100ml
Energy (kJ)	77 kJ	1%
Energy (kcal)	18 kcal	1%
Fat	< 0.5 g	1%
of which Saturates	< 0.1 g	1%
Carbohydrate	2.5 g	1%
of which Sugars	1.7 g	2%
Protein	< 0.5 g	1%
Salt	0.05 g	1%

Source of Nutritional Information Calculation from known/accepted datasets

SUPPLEMENTARY
NUTRITIONAL
INFORMATION

HANDLING &
STORAGE
INFORMATION

Directions For Use

Remove tamper-proof seal from packaging.

Storage Instructions

Store in a cool, dry place out of direct sunlight.

Storage Instructions After Opening

Keeps for up to 6 weeks after opening.

Shelf Life from Time of Production	730 Days	Exempt From Shelf Life Labelling	No
Shelf Life From Opening	42 Days		

ACCREDITATIONS/
CERTIFICATIONS/
ASSURANCE
SCHEMES
ORIGIN

BRCGS Certified		BRCGS Food Safety	
Sedex		The Vegan Society	

Product Country of Origin/Place of European Union, South Africa

Provenance

Additional Origin Details

Made in the UK Using wine from the EU

PRODUCT CHARACTERISTICS

Standards Testing

Do you undertake trend analysis of microbiological results?	No	Is shelf life testing undertaken?	No
		Commercially Sterile	No

Microbiological Standards

Organism	Description	Frequency	Target	Maximum	Sample (g or ml)
Yeast (cfu/g or ml)	cfu/ml	Every Batch	<2	2	150
Moulds (cfu/g or ml)	cfu/ml	Every Batch	<2	2	150
Aerobic Colony Count (ACC) (cfu/g or ml)	cfu/ml	Every Batch	<10	10	150

Analytical Standards

Test	Description	Frequency	Target	Range	Sample (g or ml)
pH		Every Batch	<3.8	3.3 to 3.7	50
Specific Gravity	g/cm3	Every Batch	<1.01	0.99 to 1.01	100
Salt Content (%)	g/100ml	Every Batch	<0.06	0.04 to 0.06	0.15

ORGANOLEPTICS

Appearance	ruby colour
Aroma	on the nose: typical of red wine
Taste	on the palate: light bodied, typical of red wine
Texture	liquid

HAZARD CONTROLS

Filters	Yes
----------------	-----

CONFIGURATION

Case Configuration	Inner Pack Configuration
Total Quantity of Inner Components in Outer Case	4 Units

PRODUCT WEIGHTS

Inner Component	
Variable Weight Consumer Item	No
Inner Component Volume	3 litre
Outer Case	
Outer Case Gross Weight	13.08 kg
Outer Case Net Weight	12.36 kg

PRODUCT DIMENSIONS

Inner Component	
Inner Component Depth	500 mm
Inner Component Width	370 mm
Inner Component Height	200 mm
Outer Case	
Outer Case Depth	336 mm
Outer Case Width	208 mm
Outer Case Height	212 mm

PALLET INFORMATION

Quantity of Cases Per Pallet Layer	14 Cases	Pallet Height	1.22 MTR
Quantity of Layers Per Pallet	5 Layers	Pallet Gross Weight	916 kg
Quantity of Cases Per Pallet	70 Cases		

PACKAGING

Inner Component Packaging

Type	Materials	Weight	Recycled Plastic %	Recyclable	Returnable	Composite
Poly Treated PET/PE	Plastic	35 g	- %			
Poly Treated PET/PE	Paper/Cardboard	145 g	- %			

Outer Case Packaging

Type	Materials	Weight	Recycled Plastic %	Recyclable	Returnable	Composite
Case	Plastic	140 g	- %			
Case	Paper/Cardboard	580 g	- %			

OTHER INFORMATION

Commodity Code 2103909089

CONTACT INFORMATION

Address

Gourmet Classic
 Unit 14, Endeavour Business Park
 Crow Arch Lane
 Ringwood
 Hampshire
 BH24 1SF
 England

P: (Phone) 01202 863040

The information on the [Erudus System](#) has been supplied by the manufacturers of the products and, whilst the owners of the Erudus System take steps to ensure the information is regularly updated, they give no warranty and no guarantee that the information is accurate. Product information and ingredients may change, please always read product labels carefully in addition to using the information provided by Erudus.

We do not accept liability for any inaccuracies or incorrect information contained on this site.
 Please visit <http://www.erudus.com/terms-and-conditions> for full terms and conditions.