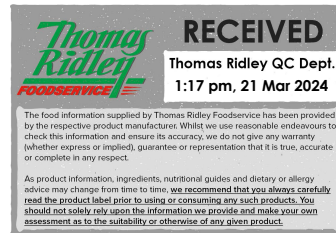


Changed Mar 21, 2024 13:02

Reviewed Mar 21, 2024 13:02

Erudus ID 9f65afedbc064753bc4cf8d2d83b0256

Version 2.0



05489

# Monte Bello Cooking Wine White 1.2% Vol. - 1 x 10L

White Cooking Wine 1x10litre

## PRODUCT DESCRIPTION

A blend of white wine and de-alcoholised wine from concentrate, lightly seasoned with salt.

Brand	Gourmet Classic
Manufacturer Product Code	7358-351
Product Type	Food
Product Category	Condiments
Storage Type	Ambient
Erudus ID	9f65afedbc064753bc4cf8d2d83b0256
Specification Type	Generic

Inner Component GTIN 5036582005671



## INGREDIENTS

### Ingredient Declaration

De-alcoholised Wine from concentrate, White Wine (10%), Grape Concentrate, Salt, Natural Flavouring, Preservative (Potassium MetabiSULPHITE)

## ALLERGENS

Product Contains:

<b>Celery/Celeriac</b>	No	<b>Mustard</b>	No
<b>Cereals Containing Gluten</b>	No	<b>Nuts (Tree)</b>	No
<b>Barley</b>	No	<b>Almond nuts</b>	No
<b>Oats</b>	No	<b>Brazil nuts</b>	No
<b>Rye</b>	No	<b>Cashew nuts</b>	No
<b>Wheat (including Spelt and Khorasan)</b>	No	<b>Hazelnuts</b>	No
<b>Crustacea</b>	No	<b>Macadamia (Queensland) nuts</b>	No
<b>Eggs</b>	No	<b>Pecan nuts</b>	No
<b>Fish</b>	No	<b>Pistachio nuts</b>	No
<b>Lupin</b>	No	<b>Walnuts</b>	No
<b>Milk</b>	No	<b>Peanuts</b>	No
<b>Molluscs</b>	No	<b>Sesame Seeds</b>	No
		<b>Soybeans</b>	No
		<b>Sulphur Dioxide and Sulphites</b>	Yes

### Additional Allergen Information

Contains SULPHITES.

## SUPPLEMENTARY INGREDIENT INFORMATION

<b>Palm Oil</b>	No	<b>Alcoholic Strength %Vol (ABV)</b>	1.2 % Vol
<b>Hydrogenated Vegetable Oil/Fat</b>	No		
<b>GM Protein/DNA</b>	No		

ADDITIVES

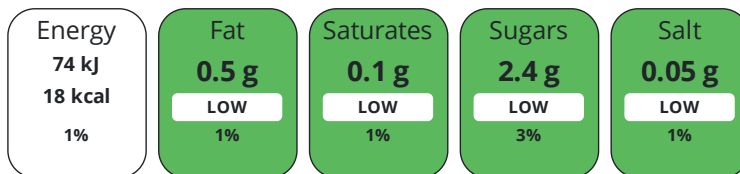
Product Contains:

<b>Artificial Antioxidants</b>	No	<b>Artificial Flavourings</b>	No
<b>Artificial Colours</b>	No	<b>Artificial Preservatives</b>	Yes
<b>Artificial Flavour Enhancers</b>	No	<b>Artificial Sweeteners</b>	No
<b>Vegan Diet</b>	Suitable for	<b>Vegetarian Diet</b>	Suitable for
<b>Halal Diet</b>	No	<b>Kosher Diet</b>	No

DIET  
SUITABILITY

NUTRITIONAL  
INFORMATION

Each 100g/ml portion contains:



of your reference intake.

Typical values per 100g/ml : Energy 18kcal / 74kj

Nutrient	per 100ml	RI per 100ml
<b>Energy (kJ)</b>	74 kJ	1%
<b>Energy (kcal)</b>	18 kcal	1%
<b>Fat</b>	< 0.5 g	1%
<b>of which Saturates</b>	< 0.1 g	1%
<b>Carbohydrate</b>	2.5 g	1%
<b>of which Sugars</b>	2.4 g	3%
<b>Protein</b>	< 0.5 g	1%
<b>Salt</b>	0.05 g	1%

**Source of Nutritional Information** Calculation from known/accepted datasets

SUPPLEMENTARY  
NUTRITIONAL  
INFORMATION

HANDLING &  
STORAGE  
INFORMATION

**Directions For Use**

Remove tamper-proof seal from packaging.

**Storage Instructions**

Store in a cool, dry place out of direct sunlight.

**Storage Instructions After Opening**

Keeps for up to 6 weeks after opening.

<b>Shelf Life from Time of Production</b>	730 Days	<b>Exempt From Shelf Life Labelling</b>	No
<b>Shelf Life From Opening</b>	42 Days		

ACCREDITATIONS/  
CERTIFICATIONS/  
ASSURANCE  
SCHEMES  
ORIGIN

<b>BRCGS Certified</b>	<b>BRCGS Food Safety</b>
<b>Sedex</b>	<b>The Vegan Society</b>

**Product Country of Origin/Place of** European Union, South Africa

**Provenance**

**Additional Origin Details**

Made in the UK Using wine from the EU

PRODUCT  
CHARACTERISTICS

Standards Testing			
<b>Do you undertake trend analysis of microbiological results?</b>	Yes	<b>Is shelf life testing undertaken?</b>	Yes
		<b>Commercially Sterile</b>	No

Microbiological Standards

Organism	Description	Frequency	Target	Maximum	Sample (g or ml)
Yeast (cfu/g or ml)	cfu	Every Batch	<2	2	150
Moulds (cfu/g or ml)	cfu	Every Batch	<2	2	150
Aerobic Colony Count (ACC) (cfu/g or ml)	cfu	Every Batch	<10	10	150

Analytical Standards

Test	Description	Frequency	Target	Range	Sample (g or ml)
pH		Every Batch	<3.8	3.3 to 3.8	50
Specific Gravity	g/cm3	Every Batch	<1.01	0.99 to 1.01	100
Salt Content (%)	g/100ml	Every Batch	<0.06	0.04 to 0.06	0.15

ORGANOLEPTICS

<b>Appearance</b>	pale yellow colour
<b>Aroma</b>	on the nose: hintsof roses and grapefruit
<b>Taste</b>	on the palate: light bodied with hints of citrus, nuttiness and soft fruit flavours
<b>Texture</b>	liquid

HAZARD CONTROLS

<b>Filters</b>	Yes
----------------	-----

CONFIGURATION

Case Configuration	Inner Pack Configuration
--------------------	--------------------------

<b>Total Quantity of Inner Components in</b>	1 Units
--	---------

<b>Outer Case</b>	
-------------------	--

PRODUCT WEIGHTS

Inner Component	
-----------------	--

<b>Variable Weight Consumer Item</b>	No
--------------------------------------	----

<b>Inner Component Volume</b>	10 litre
-------------------------------	----------

Outer Case	
------------	--

<b>Outer Case Gross Weight</b>	10.3 kg
--------------------------------	---------

<b>Outer Case Net Weight</b>	10 kg
------------------------------	-------

PRODUCT DIMENSIONS

Inner Component	
-----------------	--

<b>Inner Component Depth</b>	500 mm
------------------------------	--------

<b>Inner Component Width</b>	370 mm
------------------------------	--------

<b>Inner Component Height</b>	200 mm
-------------------------------	--------

Outer Case	
------------	--

<b>Outer Case Depth</b>	193 mm
-------------------------	--------

<b>Outer Case Width</b>	193 mm
-------------------------	--------

<b>Outer Case Height</b>	332 mm
--------------------------	--------

PALLET INFORMATION

<b>Quantity of Cases Per Pallet Layer</b>	30 Cases	<b>Pallet Height</b>	1.22 MTR
---	----------	----------------------	----------

<b>Quantity of Layers Per Pallet</b>	3 Layers	<b>Pallet Gross Weight</b>	949 kg
--------------------------------------	----------	----------------------------	--------

<b>Quantity of Cases Per Pallet</b>	90 Cases
-------------------------------------	----------

PACKAGING

Inner Component Packaging	
---------------------------	--

Type	Materials	Weight	Recycled Plastic %	Recyclable	Returnable	Composite
------	-----------	--------	--------------------	------------	------------	-----------

Poly Treated PET/PE	Plastic	59 g	- %			
---------------------	---------	------	-----	--	--	--

Poly Treated PET/PE	Paper/Cardboard	165 g	- %			
---------------------	-----------------	-------	-----	--	--	--

Outer Case Packaging

Type	Materials	Weight	Recycled Plastic %	Recyclable	Returnable	Composite
Case	Plastic	200 g	- %			
Case	Paper/Cardboard	580 g	- %			

OTHER  
INFORMATION  
CONTACT  
INFORMATION

Address

Gourmet Classic  
Unit 14, Endeavour Business Park  
Crow Arch Lane  
Ringwood  
Hampshire  
BH24 1SF  
England

P: (Phone) 01202 863040

The information on the [Erudus System](#) has been supplied by the manufacturers of the products and, whilst the owners of the Erudus System take steps to ensure the information is regularly updated, they give no warranty and no guarantee that the information is accurate. Product information and ingredients may change, please always read product labels carefully in addition to using the information provided by Erudus.

We do not accept liability for any inaccuracies or incorrect information contained on this site.  
Please visit <http://www.erudus.com/terms-and-conditions> for full terms and conditions.