

05746

# Eat Natural simply vegan peanuts, coconut and chocolate (VPCD) 12 x 45g

Simply Vegan 12x

## PRODUCT DESCRIPTION

12 vegan bars of peanuts, dried fruit, coconut and dark chocolate.

|                           |                                  |
|---------------------------|----------------------------------|
| Brand                     | Ferrero UK Ltd                   |
| Manufacturer Product Code | 254680                           |
| Product Type              | Food                             |
| Product Category          | Nuts and Seeds                   |
| Storage Type              | Ambient                          |
| Erudus ID                 | d3b521a869804e20805a90a1d0da2200 |
| Specification Type        | Legacy                           |



|                      |               |
|----------------------|---------------|
| Inner Component GTIN | 96187159      |
| Outer Case GTIN      | 5013803001124 |



## INGREDIENTS

### Ingredient Declaration

Dark chocolate 20% (cocoa mass, sugar, cocoa butter, emulsifier: **SOYA** lecithin), **PEANUTS** 18%, shredded coconut 14%, dried apricots 12%, glucose syrup, coconut blossom nectar 6%, pumpkin seeds, crisped rice (rice, sugar), sunflower seeds, roasted chickpeas.

## ALLERGENS

Product Contains:

|   |             |                                      |             |
|---|-------------|--------------------------------------|-------------|
| <b>Celery/Celeriac</b>                      | No          | <b>Mustard</b>                       | No          |
| <b>Cereals Containing Gluten</b>            | No          | <b>Nuts (Tree)</b>                   | May Contain |
| <b>Barley</b>                               | No          | <b>Almond nuts</b>                   | May Contain |
| <b>Oats</b>                                 | No          | <b>Brazil nuts</b>                   | No          |
| <b>Rye</b>                                  | No          | <b>Cashew nuts</b>                   | May Contain |
| <b>Wheat (including Spelt and Khorasan)</b> | No          | <b>Hazelnuts</b>                     | May Contain |
| <b>Crustacea</b>                            | No          | <b>Macadamia (Queensland) nuts</b>   | May Contain |
| <b>Eggs</b>                                 | No          | <b>Pecan nuts</b>                    | May Contain |
| <b>Fish</b>                                 | No          | <b>Pistachio nuts</b>                | May Contain |
| <b>Lupin</b>                                | No          | <b>Walnuts</b>                       | May Contain |
| <b>Milk</b>                                 | May Contain | <b>Peanuts</b>                       | Yes         |
| <b>Molluscs</b>                             | No          | <b>Sesame Seeds</b>                  | May Contain |
|   |             | <b>Soybeans</b>                      | Yes         |
|   |             | <b>Sulphur Dioxide and Sulphites</b> | No          |

Risk Source:

### Additional Allergen Information

For allergens, see ingredients in BOLD CAPITALS. May also contain: Nuts, sesame seeds and cow's milk

## SUPPLEMENTARY INGREDIENT INFORMATION

|                       |    |
|-----------------------|----|
| <b>Palm Oil</b>       | No |
| <b>GM Protein/DNA</b> | No |

ADDITIVES

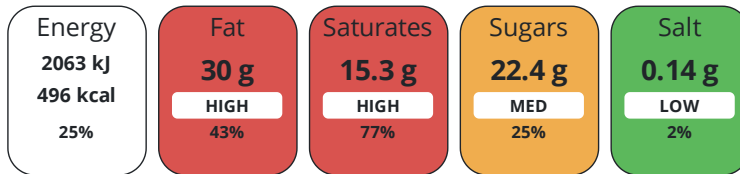
Product Contains:

|                                     |              |                                 |              |
|-------------------------------------|--------------|---------------------------------|--------------|
| <b>Artificial Antioxidants</b>      | No           | <b>Artificial Flavourings</b>   | No           |
| <b>Artificial Colours</b>           | No           | <b>Artificial Preservatives</b> | No           |
| <b>Artificial Flavour Enhancers</b> | No           | <b>Artificial Sweeteners</b>    | No           |
| <b>Suitable for Coeliacs</b>        | No           | <b>Halal Diet</b>               | No           |
| <b>Kosher Diet</b>                  | No           | <b>Vegetarian Diet</b>          | Suitable for |
| <b>Vegan Diet</b>                   | Suitable for |                                 |              |

DIET SUITABILITY

NUTRITIONAL INFORMATION

Each 100g/ml portion contains:



of your reference intake.

Typical values per 100g/ml : Energy 496kcal / 2063kj

| Nutrient                  | per 100g/ml | RI per 100g/ml | per 45g/ml serving | RI per 45g/ml serving |
|---------------------------|-------------|----------------|--------------------|-----------------------|
| <b>Energy (kJ)</b>        | 2063 kJ     | 25%            | 928.4 kJ           | 11%                   |
| <b>Energy (kcal)</b>      | 496 kcal    | 25%            | 223.2 kcal         | 11%                   |
| <b>Fat</b>                | 30 g        | 43%            | 13.5 g             | 19%                   |
| <b>of which Saturates</b> | 15.3 g      | 77%            | 6.9 g              | 35%                   |
| <b>Carbohydrate</b>       | 40.4 g      | 16%            | 18.2 g             | 7%                    |
| <b>of which Sugars</b>    | 22.4 g      | 25%            | 10.1 g             | 11%                   |
| <b>Fibre</b>              | 7.8 g       |                | 3.5 g              |                       |
| <b>Protein</b>            | 11.9 g      | 24%            | 5.4 g              | 11%                   |
| <b>Salt</b>               | 0.14 g      | 2%             | 0.1 g              | 2%                    |
| <b>Serving Size</b>       | 45 g        |                |                    |                       |

SUPPLEMENTARY NUTRITIONAL INFORMATION

HANDLING & STORAGE INFORMATION

**Directions For Use**

For allergens, see ingredients in BOLD CAPITALS. Warning. whilst we make every effort, we cannot guarantee that nutshell fragments will not find their way into this bar.

**Storage Instructions**

Store in a cool dry place.

**Shelf Life from Time of Production** 273 Days

ORIGIN

**Product Country of Origin/Place of Provenance** United Kingdom

PRODUCT CHARACTERISTICS

|  |    |  |    |
|--|----|--|----|
| Standards Testing  |    |  |    |
| <b>Do you undertake trend analysis of microbiological results?</b> | No | <b>Is shelf life testing undertaken?</b> | No |

CONFIGURATION

|   |          |                          |
|---|----------|--------------------------|
| Case Configuration                                      |          | Inner Pack Configuration |
| <b>Total Quantity of Inner Components in Outer Case</b> | 12 Units |                          |

PRODUCT WEIGHTS

|                                      |         |
|--------------------------------------|---------|
| Inner Component                      |         |
| <b>Variable Weight Consumer Item</b> | No      |
| <b>Weight/Volume</b>                 |         |
| 12x45g                               |         |
| Outer Case                           |         |
| <b>Outer Case Gross Weight</b>       | 0.59 kg |
| <b>Outer Case Net Weight</b>         | 0.54 kg |

PRODUCT DIMENSIONS

|                               |        |
|-------------------------------|--------|
| Inner Component               |        |
| <b>Inner Component Depth</b>  | 140 mm |
| <b>Inner Component Width</b>  | 40 mm  |
| <b>Inner Component Height</b> | 20 mm  |
| Outer Case                    |        |
| <b>Outer Case Depth</b>       | 185 mm |
| <b>Outer Case Width</b>       | 140 mm |
| <b>Outer Case Height</b>      | 75 mm  |

PALLET INFORMATION

|   |           |                      |          |
|---|-----------|----------------------|----------|
| <b>Quantity of Cases Per Pallet Layer</b> | 108 Cases | <b>Pallet Height</b> | 2.16 MTR |
| <b>Quantity of Layers Per Pallet</b>      | 5 Layers  |                      |          |
| <b>Quantity of Cases Per Pallet</b>       | 540 Cases |                      |          |

PACKAGING

| Outer Case Packaging |                 |        |                    |            |            |           |
|----------------------|-----------------|--------|--------------------|------------|------------|-----------|
| Type                 | Materials       | Weight | Recycled Plastic % | Recyclable | Returnable | Composite |
| Case                 | Paper/Cardboard | 54 g   | - %                |            |            |           |

OTHER INFORMATION CONTACT INFORMATION

Address  
 Ferrero UK Ltd  
 889 Greenford Rd  
 Greenford  
 UB6 0HE  
 England

P: (Phone) 07927565564

The information on the [Erudus System](#) has been supplied by the manufacturers of the products and, whilst the owners of the Erudus System take steps to ensure the information is regularly updated, they give no warranty and no guarantee that the information is accurate. Product information and ingredients may change, please always read product labels carefully in addition to using the information provided by Erudus.

We do not accept liability for any inaccuracies or incorrect information contained on this site. Please visit <http://www.erudus.com/terms-and-conditions> for full terms and conditions.