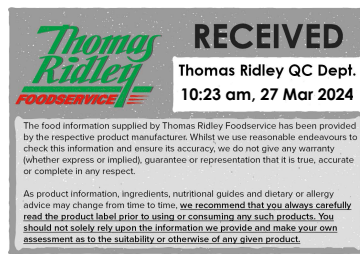


Changed Mar 27, 2024 09:38

Reviewed Mar 27, 2024 09:38

Erudus ID 2fe82f7faf9d4269b5d1e0eb5e1efb65

Version 2.0



Thomas Ridley
FOODSERVICE

RECEIVED
Thomas Ridley QC Dept.
10:23 am, 27 Mar 2024

The food information supplied by Thomas Ridley Foodservice has been provided by the respective product manufacturer. Whilst we use reasonable endeavours to check this information and ensure its accuracy, we do not give any warranty (whether express or implied), guarantee or representation that it is true, accurate or complete in any respect.

As product information, ingredients, nutritional guides and dietary or allergy advice may change from time to time, we recommend that you always carefully read the product label prior to using or consuming any such products. You should not solely rely upon the information we provide and make your own assessment as to the suitability or otherwise of any given product.



05854

Wild Mushroom Sauce 2 x 800g

Wild Mushroom Sauce 2x800g

PRODUCT DESCRIPTION

A viscous paste made from a blend of mushrooms, onion and garlic to make a rich wild mushroom sauce when finished with double cream.

| | |
|----------------------------------|----------------------------------|
| Brand | Essential Cuisine Limited |
| Manufacturer Product Code | ECWMSC/1d - SW00129 |
| Effective Date | Jul 14, 2021 |
| Product Type | Food |
| Product Category | Gravy / Bouillon |
| Storage Type | Ambient |
| Erudus ID | 2fe82f7faf9d4269b5d1e0eb5e1efb65 |
| Specification Type | Generic |



| | |
|-----------------------------|----------------|
| Inner Component GTIN | 5029540002089 |
| Outer Case GTIN | 05029540002096 |



INGREDIENTS

Ingredient Declaration

Wild Mushroom Stock (Water, Wild Mushroom, Mushroom Extract, Mushroom Juices, Onion, Garlic), Modified Tapioca Starch, Glucose Syrup, Salt, Maltodextrin, Yeast Extracts, Sunflower Oil, Flavourings, Sugar, Herb & Spice Extracts.

ALLERGENS

Product Contains:

| | | | |
|---|----|--------------------------------------|----|
| Celery/Celery | No | Mustard | No |
| Cereals Containing Gluten | No | Nuts (Tree) | No |
| Barley | No | Almond nuts | No |
| Oats | No | Brazil nuts | No |
| Rye | No | Cashew nuts | No |
| Wheat (including Spelt and Khorasan) | No | Hazelnuts | No |
| Crustacea | No | Macadamia (Queensland) nuts | No |
| Eggs | No | Pecan nuts | No |
| Fish | No | Pistachio nuts | No |
| Lupin | No | Walnuts | No |
| Milk | No | Peanuts | No |
| Molluscs | No | Sesame Seeds | No |
| | | Soybeans | No |
| | | Sulphur Dioxide and Sulphites | No |

FREE FROM CLAIMS

| | |
|--------------------|-----|
| Gluten-Free | Yes |
|--------------------|-----|

SUPPLEMENTARY
INGREDIENT
INFORMATION

| | |
|---------------------------------------|----|
| Palm Oil | No |
| Hydrogenated Vegetable Oil/Fat | No |
| GM Protein/DNA | No |

ADDITIVES

Product Contains:

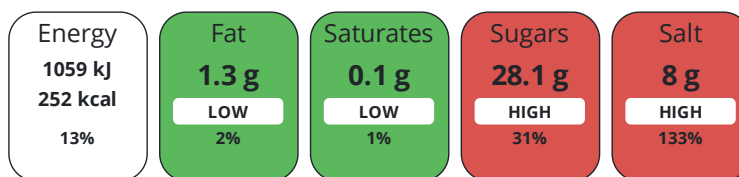
| | | | |
|-------------------------------------|----|---------------------------------|-----|
| Artificial Antioxidants | No | Artificial Flavourings | Yes |
| Artificial Colours | No | Artificial Preservatives | No |
| Artificial Flavour Enhancers | No | Artificial Sweeteners | No |

DIET
SUITABILITY

| | | | |
|-------------------|--------------|------------------------|--------------|
| Vegan Diet | Suitable for | Vegetarian Diet | Suitable for |
| Halal Diet | No | Kosher Diet | No |

NUTRITIONAL
INFORMATION

Each 100g/ml portion contains:



of your reference intake.

Typical values per 100g/ml : Energy 252kcal / 1059kJ

| Nutrient | per 100g | RI per 100g |
|---------------------------|----------|-------------|
| Energy (kJ) | 1059 kJ | 13% |
| Energy (kcal) | 252 kcal | 13% |
| Fat | 1.3 g | 2% |
| of which Saturates | 0.1 g | 1% |
| Carbohydrate | 56.9 g | 22% |
| of which Sugars | 28.1 g | 31% |
| Fibre | 0.3 g | |
| Protein | 3.2 g | 6% |
| Salt | 8 g | 133% |
| Sodium | 3200 mg | |

SUPPLEMENTARY
NUTRITIONAL
INFORMATION

HANDLING &
STORAGE
INFORMATION

Directions For Use

Directions to make 1 litre of Wild Mushroom Sauce; Mix 160g wild Mushroom sauce Base with 880ml of lukewarm water in a suitable saucepan. Bring to the boil stirring continuously and then simmer for 5 minutes until the sauce thickens. Add 120ml double cream to finish, bring back to the boil and serve.

Storage Instructions

Store in cool, dry, ambient conditions.

| | | | |
|---|----------|---|----|
| Shelf Life from Time of Production | 456 Days | Exempt From Shelf Life Labelling | No |
|---|----------|---|----|

| | |
|------------------------|--------------------------------------|
| BRCGS Certified | Food for Life Supplier Scheme |
|------------------------|--------------------------------------|

ACCREDITATIONS/
CERTIFICATIONS/
ASSURANCE
SCHEMES
ORIGIN

| | |
|---|----------------|
| Product Country of Origin/Place of | United Kingdom |
|---|----------------|

Provenance

Standards Testing

PRODUCT
CHARACTERISTICS

| | | | | | | | |
|-----------------------|--|---|--|---------------------------|-------------------|-------------------|------------------|
| | Do you undertake trend analysis of microbiological results? | No | Is shelf life testing undertaken? | No | | | |
| CONFIGURATION | Case Configuration | | Inner Pack Configuration | | | | |
| | Total Quantity of Inner Components in Outer Case | 2 Units | | | | | |
| | Is the Outer Case Splittable? | No | | | | | |
| PRODUCT WEIGHTS | Inner Component | | | | | | |
| | Variable Weight Consumer Item | No | | | | | |
| | Inner Component Weight | 800 g | | | | | |
| | e mark | Yes | | | | | |
| | Outer Case | | | | | | |
| | Outer Case Gross Weight | 1.9 kg | | | | | |
| | Outer Case Net Weight | 1.6 kg | | | | | |
| PRODUCT DIMENSIONS | Inner Component | | | | | | |
| | Inner Component Depth | 89 mm | | | | | |
| | Inner Component Width | 89 mm | | | | | |
| | Inner Component Height | 136 mm | | | | | |
| | Outer Case | | | | | | |
| | Outer Case Depth | 179 mm | | | | | |
| | Outer Case Width | 89 mm | | | | | |
| | Outer Case Height | 136 mm | | | | | |
| PALLET INFORMATION | Quantity of Cases Per Pallet Layer | 60 Cases | Pallet Height | 1.1 MTR | | | |
| | Quantity of Layers Per Pallet | 8 Layers | Pallet Gross Weight | 947.5 kg | | | |
| | Quantity of Cases Per Pallet | 480 Cases | | | | | |
| PACKAGING | Inner Component Packaging | | | | | | |
| | Type | Materials | Weight | Recycled Plastic % | Recyclable | Returnable | Composite |
| | Pot | Plastic | 42.1 g | - % | | | |
| | Outer Case Packaging | | | | | | |
| | Type | Materials | Weight | Recycled Plastic % | Recyclable | Returnable | Composite |
| | Poly Treated PET/PE | Plastic | 104.2 g | - % | | | |
| | Poly Treated PET/PE | Paper/Cardboard | 5.16 g | - % | | | |
| | Transport Packaging | | | | | | |
| | Type | Materials | Weight | Recycled Plastic % | Recyclable | Returnable | Composite |
| | Other | Plastic | 500 g | - % | | | |
| | Other | Paper/Cardboard | 500 g | - % | | | |
| | Other | Wood | 30000 g | - % | | | |
| MARKETING INFORMATION | Marketing Description | Our versatile Wild Mushroom Sauce Base contains hand picked ceps from wild forests. Use to make a rich, creamy sauce, perfect for a variety of vegetarian dishes. | | | | | |
| OTHER INFORMATION | | | | | | | |

CONTACT
INFORMATION

Address

Essential Cuisine Limited
Essential Cuisine Ltd
Browning Way
Winsford
Cheshire
CW7 2RH
United Kingdom

P. (Phone) 01606 541490

The information on the [Erudus System](#) has been supplied by the manufacturers of the products and, whilst the owners of the Erudus System take steps to ensure the information is regularly updated, they give no warranty and no guarantee that the information is accurate. Product information and ingredients may change, please always read product labels carefully in addition to using the information provided by Erudus.

We do not accept liability for any inaccuracies or incorrect information contained on this site.
Please visit <http://www.erudus.com/terms-and-conditions> for full terms and conditions.