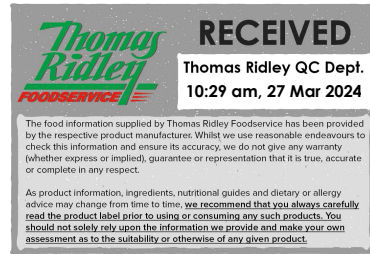


Changed Mar 27, 2024 09:52

Reviewed Mar 27, 2024 09:52

Erudus ID b7a4a625a88f40d59fe79ebba5dee7e5

Version 2.0



Thomas Ridley
FOODSERVICE

RECEIVED
Thomas Ridley QC Dept.
10:29 am, 27 Mar 2024

The food information supplied by Thomas Ridley Foodservice has been provided by the respective product manufacturer. Whilst we use reasonable endeavours to check this information and ensure its accuracy, we do not give any warranty (whether express or implied), guarantee or representation that it is true, accurate or complete in any respect.

As product information, ingredients, nutritional guides and dietary or allergy advice may change from time to time, we recommend that you always carefully read the product label prior to using or consuming any such products. You should not solely rely upon the information we provide and make your own assessment as to the suitability or otherwise of any given product.



05856

EC Peppercorn Sauce 2 x 800g

Peppercorn Sauce 2x800g

PRODUCT DESCRIPTION

A dark brown viscous paste with particulates of pepper.

Brand	Essential Cuisine Limited
Manufacturer Product Code	SW00661
Manufacturer Version	1
Number	
Effective Date	May 24, 2022
Product Type	Food
Product Category	Gravy / Bouillon
Storage Type	Ambient
Erudus ID	b7a4a625a88f40d59fe79ebba5dee7e5
Specification Type	Generic
Inner Component GTIN	5029540002027
Outer Case GTIN	05029540002034



GLUTEN FREE

INGREDIENTS

Ingredient Declaration

Beef Stock (Water, Beef Stock), Veal Stock (Water, Veal Juice, Veal Fat, Concentrated Vegetable Juices (Carrot, Tomato, Onion, Mushroom, Garlic)), Modified Tapioca Starch, Salt, Flavourings, Sugar, Yeast Extracts, Cracked Black Peppercorns, Glucose, Brandy, Colour (Caramel), Ground Black Pepper, Red Wine Concentrate.

ALLERGENS

Product Contains:

Celery/Celeriac	No	Mustard	No
Cereals Containing Gluten	No	Nuts (Tree)	No
Barley	No	Almond nuts	No
Oats	No	Brazil nuts	No
Rye	No	Cashew nuts	No
Wheat (including Spelt and Khorasan)	No	Hazelnuts	No
Crustacea	No	Macadamia (Queensland) nuts	No
Eggs	No	Pecan nuts	No
Fish	No	Pistachio nuts	No
Lupin	No	Walnuts	No
Milk	No	Peanuts	No
Molluscs	No	Sesame Seeds	No
		Soybeans	No
		Sulphur Dioxide and Sulphites	No

Additional Allergen Information

N/A

FREE FROM CLAIMS

Gluten-Free	Yes
--------------------	-----

SUPPLEMENTARY
INGREDIENT
INFORMATION

Palm Oil	No
Hydrogenated Vegetable Oil/Fat	No
GM Protein/DNA	No

ADDITIVES

Product Contains:

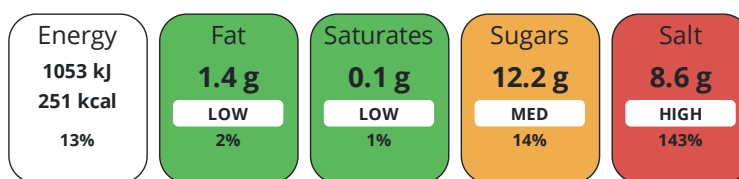
Artificial Antioxidants	No	Artificial Flavourings	Yes
Artificial Colours	No	Artificial Preservatives	No
Artificial Flavour Enhancers	No	Artificial Sweeteners	No

DIET
SUITABILITY

Vegan Diet	No	Vegetarian Diet	No
Halal Diet	No	Kosher Diet	No

NUTRITIONAL
INFORMATION

Each 100g/ml portion contains:



of your reference intake.

Typical values per 100g/ml : Energy 251kcal / 1053kj

Nutrient	per 100g	RI per 100g
Energy (kJ)	1053 kJ	13%
Energy (kcal)	251 kcal	13%
Fat	1.4 g	2%
of which Saturates	< 0.1 g	1%
Carbohydrate	38.5 g	15%
of which Sugars	12.2 g	14%
Fibre	0.1 g	
Protein	21 g	42%
Salt	8.6 g	143%
Sodium	3400 mg	

SUPPLEMENTARY
NUTRITIONAL
INFORMATION

HANDLING &
STORAGE
INFORMATION

Directions For Use

Directions to make 1 litre of peppercorn sauce; Mix 160g Peppercorn Sauce Base with 880ml lukewarm water in a suitable saucepan. Bring to the boil stirring continuously and then simmer for 5 minutes until the sauce thickens. Add 120 ml double cream to finish, bring back to the boil and serve.

Storage Instructions

Store in cool, dry ambient conditions.

Shelf Life from Time of Production	456 Days	Exempt From Shelf Life Labelling	No
---	----------	---	----

ACCREDITATIONS/
CERTIFICATIONS/
ASSURANCE
SCHEMES

BRCGS Certified	Food for Life Supplier Scheme
------------------------	--------------------------------------

ORIGIN	Product Country of Origin/Place of Provenance United Kingdom						
	Additional Origin Details						
	Manufactured in the UK using materials from EU and non EU sources						
PRODUCT CHARACTERISTICS	Standards Testing						
	Do you undertake trend analysis of microbiological results?	No	Is shelf life testing undertaken?		No		
CONFIGURATION	Case Configuration		Inner Pack Configuration				
	Total Quantity of Inner Components in Outer Case	2 Units					
	Is the Outer Case Splittable?	Yes					
PRODUCT WEIGHTS	Inner Component						
	Variable Weight Consumer Item	No					
	Inner Component Weight	800 g					
	e mark	Yes					
	Outer Case						
	Outer Case Gross Weight	1.9 kg					
	Outer Case Net Weight	1.6 kg					
PRODUCT DIMENSIONS	Inner Component						
	Inner Component Depth	89 mm					
	Inner Component Width	89 mm					
	Inner Component Height	136 mm					
	Outer Case						
	Outer Case Depth	179 mm					
	Outer Case Width	89 mm					
	Outer Case Height	136 mm					
PALLET INFORMATION	Quantity of Cases Per Pallet Layer	60 Cases	Pallet Height		1.1 MTR		
	Quantity of Layers Per Pallet	8 Layers	Pallet Gross Weight		947.5 kg		
	Quantity of Cases Per Pallet	480 Cases					
PACKAGING	Inner Component Packaging						
	Type	Materials	Weight	Recycled Plastic %	Recyclable	Returnable	Composite
	Pot	Plastic	42.1 g	- %			
	Outer Case Packaging						
	Type	Materials	Weight	Recycled Plastic %	Recyclable	Returnable	Composite
	Poly Treated PET/PE	Plastic	104.2 g	- %			
	Poly Treated PET/PE	Paper/Cardboard	5.16 g	- %			
	Transport Packaging						
	Type	Materials	Weight	Recycled Plastic %	Recyclable	Returnable	Composite
	Other	Plastic	500 g	- %			
	Other	Paper/Cardboard	500 g	- %			
	Other	Wood	30000 g	- %			

MARKETING
INFORMATION

Marketing Description

Our Peppercorn Sauce Base contains a blend of beef and veal stocks, cracked black pepper, and a splash of brandy. Make it your own by adding fresh cream and peppercorns.

OTHER
INFORMATION

Manufacturer Comments

N/A

CONTACT
INFORMATION

Address

Essential Cuisine Limited
Essential Cuisine Ltd
Browning Way
Winsford
Cheshire
CW7 2RH
United Kingdom

P: (Phone) 01606 541490

The information on the [Erudus System](#) has been supplied by the manufacturers of the products and, whilst the owners of the Erudus System take steps to ensure the information is regularly updated, they give no warranty and no guarantee that the information is accurate. Product information and ingredients may change, please always read product labels carefully in addition to using the information provided by Erudus.

We do not accept liability for any inaccuracies or incorrect information contained on this site.
Please visit <http://www.erudus.com/terms-and-conditions> for full terms and conditions.