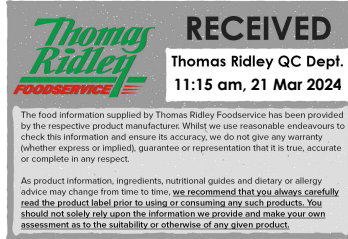


Changed Mar 21, 2024 09:54

Reviewed Mar 21, 2024 09:54

Erudus ID f61618a97d324a20a44c12f4d31dcbf9

Version 2.0



Thomas Ridley
FOODSERVICE

RECEIVED
Thomas Ridley QC Dept.
11:15 am, 21 Mar 2024

The food information supplied by Thomas Ridley Foodservice has been provided by the respective product manufacturer. Whilst we use reasonable endeavours to check this information and ensure its accuracy, we do not give any warranty (whether express or implied), guarantee or representation that it is true, accurate or complete in any respect.

As product information, ingredients, nutritional guides and dietary or allergy advice may change from time to time, we recommend that you always carefully read the product label prior to using or consuming any such products. You should not solely rely upon the information we provide and make your own assessment as to the suitability or otherwise of any given product.



05871

Cooking Wine Italian White 4.8% Vol. - 2 x 5L

Cooking Wine Italian White 4.8% Vol. 2x5litre

PRODUCT DESCRIPTION

A blend of white wine and de-alcoholised wine from concentrate, lightly seasoned with salt.

Brand	Gourmet Classic
Manufacturer Product Code	7036-262
Product Type	Food
Product Category	Condiments
Storage Type	Ambient
Erudus ID	f61618a97d324a20a44c12f4d31dcbf9
Specification Type	Generic
Inner Component GTIN	5036582000027
Outer Case GTIN	05036582003868



INGREDIENTS

Ingredient Declaration

De-alcoholised wine from concentrate, White Wine (40%), Salt, Preservative (Potassium MetabiSULPHITE)

ALLERGENS

Product Contains:

Celery/Celeriac	No	Mustard	No
Cereals Containing Gluten	No	Nuts (Tree)	No
Barley	No	Almond nuts	No
Oats	No	Brazil nuts	No
Rye	No	Cashew nuts	No
Wheat (including Spelt and Khorasan)	No	Hazelnuts	No
Crustacea	No	Macadamia (Queensland) nuts	No
Eggs	No	Pecan nuts	No
Fish	No	Pistachio nuts	No
Lupin	No	Walnuts	No
Milk	No	Peanuts	No
Molluscs	No	Sesame Seeds	No
		Soybeans	No
		Sulphur Dioxide and Sulphites	Yes

Additional Allergen Information

Contains Sulphites

SUPPLEMENTARY INGREDIENT INFORMATION

Palm Oil	No	Alcoholic Strength %Vol (ABV)	4.8 % Vol
Hydrogenated Vegetable Oil/Fat	No		
GM Protein/DNA	No		

ADDITIVES

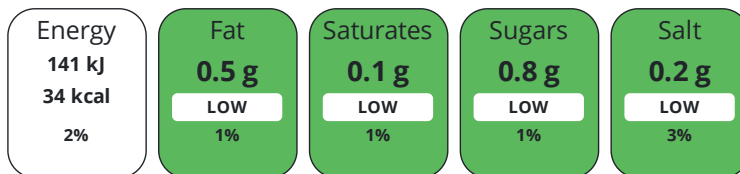
Product Contains:

Artificial Antioxidants	No	Artificial Flavourings	No
Artificial Colours	No	Artificial Preservatives	Yes
Artificial Flavour Enhancers	No	Artificial Sweeteners	No
Vegan Diet	Suitable for	Vegetarian Diet	Suitable for
Halal Diet	No	Kosher Diet	No

DIET
SUITABILITY

NUTRITIONAL
INFORMATION

Each 100g/ml portion contains:



of your reference intake.

Typical values per 100g/ml : Energy 34kcal / 141kj

Nutrient	per 100ml	RI per 100ml
Energy (kJ)	141 kJ	2%
Energy (kcal)	34 kcal	2%
Fat	< 0.5 g	1%
of which Saturates	< 0.1 g	1%
Carbohydrate	2.2 g	1%
of which Sugars	0.8 g	1%
Protein	< 0.5 g	1%
Salt	0.2 g	3%

Source of Nutritional Information Calculation from known/accepted datasets

SUPPLEMENTARY
NUTRITIONAL
INFORMATION

HANDLING &
STORAGE
INFORMATION

Directions For Use

Remove tamper-proof seal from packaging.

Storage Instructions

Store in a cool, dry place out of direct sunlight.

Storage Instructions After Opening

Keeps for up to 6 weeks after opening.

Shelf Life from Time of Production	730 Days	Exempt From Shelf Life Labelling	No
Shelf Life From Opening	42 Days		

ACCREDITATIONS/
CERTIFICATIONS/
ASSURANCE
SCHEMES
ORIGIN

BRCGS Certified		BRCGS Food Safety	
Sedex		The Vegan Society	

Product Country of Origin/Place of Italy

Provenance

Additional Origin Details

Made in the UK Using wine from Italy

PRODUCT
CHARACTERISTICS

Standards Testing			
Do you undertake trend analysis of microbiological results?	Yes	Is shelf life testing undertaken?	Yes
		Commercially Sterile	No

Microbiological Standards

Organism	Description	Frequency	Target	Maximum	Sample (g or ml)
Yeast (cfu/g or ml)	cfu	Every Batch	<2	2	150
Moulds (cfu/g or ml)	cfu	Every Batch	<2	2	150
Aerobic Colony Count (ACC) (cfu/g or ml)	cfu	Every Batch	<100	100	150

Analytical Standards

Test	Description	Frequency	Target	Range	Sample (g or ml)
pH		Every Batch	<3.8	2.8 to 3.8	50
Specific Gravity	g/cm3	Every Batch	<0.998	0.990 to 1.002	100
Salt Content (%)	g/100ml	Every Batch	<0.22	0.16 to 0.24	0.15

ORGANOLEPTICS

Appearance	pale yellow colour
Aroma	in the nose: hints of fruit aromas
Taste	on the palate: light bodied with fruity and clean flavours
Texture	liquid

HAZARD CONTROLS

Filters	Yes
----------------	-----

CONFIGURATION

Case Configuration	Inner Pack Configuration
--------------------	--------------------------

Total Quantity of Inner Components in	2 Units
--	---------

Outer Case	
-------------------	--

PRODUCT WEIGHTS

Inner Component	
-----------------	--

Variable Weight Consumer Item	No
--------------------------------------	----

Inner Component Volume	5 litre
-------------------------------	---------

Outer Case	
------------	--

Outer Case Gross Weight	10.3 kg
--------------------------------	---------

Outer Case Net Weight	10 kg
------------------------------	-------

PRODUCT DIMENSIONS

Inner Component	
-----------------	--

Inner Component Depth	131 mm
------------------------------	--------

Inner Component Width	190 mm
------------------------------	--------

Inner Component Height	255 mm
-------------------------------	--------

Outer Case	
------------	--

Outer Case Depth	262 mm
-------------------------	--------

Outer Case Width	380 mm
-------------------------	--------

Outer Case Height	255 mm
--------------------------	--------

PALLET INFORMATION

Quantity of Cases Per Pallet Layer	21 Cases	Pallet Height	1.15 MTR
---	----------	----------------------	----------

Quantity of Layers Per Pallet	4 Layers	Pallet Gross Weight	929 kg
--------------------------------------	----------	----------------------------	--------

Quantity of Cases Per Pallet	84 Cases		
-------------------------------------	----------	--	--

PACKAGING

Inner Component Packaging	
---------------------------	--

Type	Materials	Weight	Recycled Plastic %	Recyclable	Returnable	Composite
------	-----------	--------	--------------------	------------	------------	-----------

Poly Treated PET/PE	Plastic	43 g	- %			
------------------------	---------	------	-----	--	--	--

Poly Treated PET/PE	Paper/Cardboard	145 g	- %			
------------------------	-----------------	-------	-----	--	--	--

Outer Case Packaging

Type	Materials	Weight	Recycled Plastic %	Recyclable	Returnable	Composite
Case	Plastic	140 g	- %			
Case	Paper/Cardboard	160 g	- %			

OTHER
INFORMATION
CONTACT
INFORMATION

Address

Gourmet Classic
Unit 14, Endeavour Business Park
Crow Arch Lane
Ringwood
Hampshire
BH24 1SF
England

P: (Phone) 01202 863040

The information on the [Erudus System](#) has been supplied by the manufacturers of the products and, whilst the owners of the Erudus System take steps to ensure the information is regularly updated, they give no warranty and no guarantee that the information is accurate. Product information and ingredients may change, please always read product labels carefully in addition to using the information provided by Erudus.

We do not accept liability for any inaccuracies or incorrect information contained on this site.
Please visit <http://www.erudus.com/terms-and-conditions> for full terms and conditions.