


Changed Jun 27, 2024 14:55

Reviewed Jun 27, 2024 14:55

Erudus ID cb23873078f7497386a4d593fcc294c3

Version 2.0



RECEIVED
Thomas Ridley QC Dept.
12:28 pm, 28 Jun 2024

The food information supplied by Thomas Ridley Foodservice has been provided by the respective product manufacturer. Whilst we use reasonable endeavours to check this information and ensure its accuracy, we do not give any warranty (whether express or implied), guarantee or representation that it is true, accurate or complete in any respect.

As product information, ingredients, nutritional guides and dietary or allergy advice may change from time to time, we recommend that you always carefully read the product label prior to using or consuming any such products. You should not solely rely upon the information we provide and make your own assessment as to the suitability or otherwise of any given product.



05911

RUTH'S COOKIE PUCK BELGIAN WHITE CHOCOLATE 80G X 100

Vanilla Flavour Cookie Dough With Chunks Of Belgian White Chocolate 100x80g

PRODUCT DESCRIPTION

Cookie dough made with Belgian white chocolate chunks

Brand	Europastry
Manufacturer Product Code	0.01277.682
Product Type	Food
Product Category	Other Bakery Products
Storage Type	Frozen
Erudus ID	cb23873078f7497386a4d593fcc294c3
Specification Type	Bakery Products

Outer Case GTIN 5028966024996



INGREDIENTS

Ingredient Declaration

white chocolate 31% (sugar, cocoa butter, whole MILK powder, emulsifier (SOYA lecithin), natural vanilla flavouring), WHEAT flour (with calcium, iron, niacin, thiamin), soft light brown sugar (sugar, cane molasses), sugar, butter (MILK), vegetable oils (palm, rapeseed), invert sugar syrup, whole EGG powder, raising agents (sodium bicarbonate, disodium diphosphate), skimmed MILK powder, salt, emulsifier (E471), stabiliser (xanthan gum), natural flavouring.

ALLERGENS

Product Contains:

Celery/Celeriac	No	Mustard	No
Cereals Containing Gluten	Yes	Nuts (Tree)	No
Barley	No	Almond nuts	No
Oats	No	Brazil nuts	No
Rye	No	Cashew nuts	No
Wheat (including Spelt and Khorasan)	Yes	Hazelnuts	No
Crustacea	No	Macadamia (Queensland) nuts	No
Eggs	Yes	Pecan nuts	No
Fish	No	Pistachio nuts	No
Lupin	No	Walnuts	No
Milk	Yes	Peanuts	No
Molluscs	No	Sesame Seeds	No
		Soybeans	Yes
		Sulphur Dioxide and Sulphites	No

SUPPLEMENTARY INGREDIENT INFORMATION

Palm Oil	Yes
Hydrogenated Vegetable Oil/Fat	No
GM Protein/DNA	No

ADDITIVES

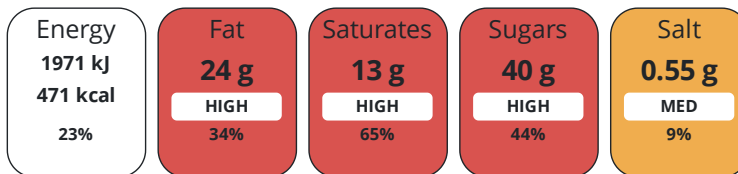
Product Contains:

Artificial Antioxidants	No	Artificial Flavourings	No
Artificial Colours	No	Artificial Preservatives	No
Artificial Flavour Enhancers	No	Artificial Sweeteners	No
Vegan Diet	No	Vegetarian Diet	Suitable for
Halal Diet	Suitable for	Kosher Diet	No

DIET SUITABILITY

NUTRITIONAL INFORMATION

Each 100g/ml portion contains:



of your reference intake.

Typical values per 100g/ml : Energy 471kcal / 1971kJ

Nutrient	per 100g	RI per 100g
Energy (kJ)	1971 kJ	23%
Energy (kcal)	471 kcal	24%
Fat	24 g	34%
of which Saturates	13 g	65%
Carbohydrate	58.9 g	23%
of which Sugars	40 g	44%
Protein	4.8 g	10%
Salt	0.55 g	9%

SUPPLEMENTARY NUTRITIONAL INFORMATION

HANDLING & STORAGE INFORMATION

Directions For Use

Baking Instructions: place pucks approx. 40mm apart on a baking tray lined with silicone paper. Bake at 180-200°C for 9-11 minutes, depending on type of oven.

Storage Instructions

Frozen Product: store at -18°C, once defrosted do not refreeze

Shelf Life from Time of Production 730 Days

ACCREDITATIONS/ CERTIFICATIONS/ ASSURANCE SCHEMES ORIGIN

IFS Food Standard **Other Accreditation**

Product Country of Origin/Place of Provenance Netherlands (the)

Additional Origin Details

n/a

PRODUCT CHARACTERISTICS

Standards Testing

Do you undertake trend analysis of microbiological results?	No	Is shelf life testing undertaken?	No
--	----	--	----

CONFIGURATION	Case Configuration		Inner Pack Configuration				
	Total Quantity of Inner Components in Outer Case	100 Units					
	Is the Outer Case Splittable?	No					
PRODUCT WEIGHTS	Inner Component						
	Variable Weight Consumer Item	No					
	Inner Component Weight	80 g					
	Outer Case						
	Outer Case Gross Weight	8.38 kg					
PRODUCT DIMENSIONS	Outer Case						
	Outer Case Net Weight	8 kg					
	Inner Component						
	Inner Component Depth	0 mm					
	Inner Component Width	0 mm					
	Inner Component Height	0 mm					
	Outer Case						
PALLET INFORMATION	Outer Case Depth	398 mm					
	Outer Case Width	294 mm					
	Outer Case Height	178 mm					
	Quantity of Cases Per Pallet Layer	10 Cases	Pallet Height	1.93 MTR			
PACKAGING	Quantity of Layers Per Pallet	10 Layers					
	Quantity of Cases Per Pallet	100 Cases					
	Outer Case Packaging						
	Type	Materials	Weight	Recycled Plastic %	Recyclable	Returnable	Composite
Case	Plastic	17 g	- %				
Case	Paper/Cardboard	302 g	- %				
Case	Other	3 g	- %				
OTHER INFORMATION	Intrastat/Taric Code	19012000					
	Manufacturer Comments	n/a					
CONTACT INFORMATION	Address						
	Europastry						
	Plaza Xavier Cugat 2, Edificio Planta 4,						
	Parc Sant Cugat Nord, 08174 Sant Cugat del Vallès						
Barcelona							
Spain							

Commercial Contact
Ash Hirani
UK & Ireland Sales Manager
ahirani@europastry.com

P: (Phone) 07757701544

The information on the [Erudus System](#) has been supplied by the manufacturers of the products and, whilst the owners of the Erudus System take steps to ensure the information is regularly updated, they give no warranty and no guarantee that the information is accurate. Product information and ingredients may change, please always read product labels carefully in addition to using the information provided by Erudus.

We do not accept liability for any inaccuracies or incorrect information contained on this site.
Please visit <http://www.erudus.com/terms-and-conditions> for full terms and conditions.