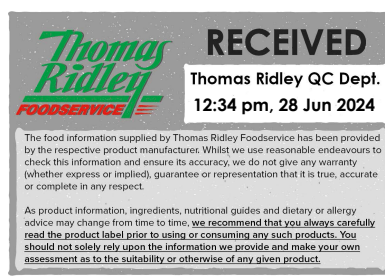


Changed Jun 27, 2024 15:03

Reviewed Jun 27, 2024 15:03

Erudus ID 96156a386e764423b14e5acf0029de3f

Version 2.0



05913

# RUTH'S COOKIE PUCK BELGIAN CHOCOLATE CHUNK BEL 80G X 100

Belgian Chocolate Chunk Cookie Puck 100x80g

## PRODUCT DESCRIPTION

Cookie dough made with Belgian plain, milk chocolate chunks

Brand	Europastry
Manufacturer Product Code	0.01277.666
Product Type	Food
Product Category	Other Bakery Products
Storage Type	Frozen
Erudus ID	96156a386e764423b14e5acf0029de3f
Specification Type	Bakery Products

Outer Case GTIN 5028966024972



## INGREDIENTS

### Ingredient Declaration

WHEAT flour (with calcium, iron, niacin, thiamin), plain chocolate 15% (sugar, cocoa mass, cocoa butter, whey powder (MILK), emulsifier (SOYA lecithin), natural vanilla flavouring), milk chocolate 15% (sugar, whole MILK powder, cocoa butter, cocoa mass, emulsifier (SOYA lecithin), natural vanilla flavouring), soft light brown sugar (sugar, cane molasses), sugar, butter (MILK), vegetable oils (palm, rapeseed), invert sugar syrup, whole EGG powder, raising agents (sodium bicarbonate, disodium diphosphate), skimmed MILK powder, salt, emulsifier (E471), stabiliser (xanthan gum), natural flavouring.

## ALLERGENS

Product Contains:

<b>Celery/Celeriac</b>	No	<b>Mustard</b>	No
<b>Cereals Containing Gluten</b>	Yes	<b>Nuts (Tree)</b>	No
<b>Barley</b>	No	<b>Almond nuts</b>	No
<b>Oats</b>	No	<b>Brazil nuts</b>	No
<b>Rye</b>	No	<b>Cashew nuts</b>	No
<b>Wheat (including Spelt and Khorasan)</b>	Yes	<b>Hazelnuts</b>	No
<b>Crustacea</b>	No	<b>Macadamia (Queensland) nuts</b>	No
<b>Eggs</b>	Yes	<b>Pecan nuts</b>	No
<b>Fish</b>	No	<b>Pistachio nuts</b>	No
<b>Lupin</b>	No	<b>Walnuts</b>	No
<b>Milk</b>	Yes	<b>Peanuts</b>	No
<b>Molluscs</b>	No	<b>Sesame Seeds</b>	No
		<b>Soybeans</b>	Yes
		<b>Sulphur Dioxide and Sulphites</b>	No

## SUPPLEMENTARY INGREDIENT INFORMATION

<b>Palm Oil</b>	Yes
<b>Hydrogenated Vegetable Oil/Fat</b>	No
<b>GM Protein/DNA</b>	No

ADDITIVES

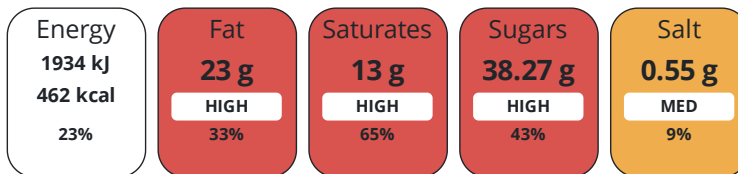
Product Contains:

<b>Artificial Antioxidants</b>	No	<b>Artificial Flavourings</b>	No
<b>Artificial Colours</b>	No	<b>Artificial Preservatives</b>	No
<b>Artificial Flavour Enhancers</b>	No	<b>Artificial Sweeteners</b>	No
<b>Vegan Diet</b>	No	<b>Vegetarian Diet</b>	Suitable for
<b>Halal Diet</b>	Suitable for	<b>Kosher Diet</b>	No

DIET SUITABILITY

NUTRITIONAL INFORMATION

Each 100g/ml portion contains:



of your reference intake.

Typical values per 100g/ml : Energy 462kcal / 1934kJ

Nutrient	per 100g	RI per 100g
<b>Energy (kJ)</b>	1934 kJ	23%
<b>Energy (kcal)</b>	462 kcal	23%
<b>Fat</b>	23 g	33%
<b>of which Saturates</b>	13 g	65%
<b>Carbohydrate</b>	57.75 g	22%
<b>of which Sugars</b>	38.27 g	43%
<b>Protein</b>	4.8 g	10%
<b>Salt</b>	0.55 g	9%

SUPPLEMENTARY NUTRITIONAL INFORMATION

HANDLING & STORAGE INFORMATION

**Directions For Use**

Baking Instructions: place pucks approx. 40mm apart on a baking tray lined with silicone paper. Bake at 180-200°C for 9-11 minutes, depending on type of oven.

**Storage Instructions**

Frozen Product: store at -18°C, once defrosted do not refreeze

**Shelf Life from Time of Production** 730 Days

ACCREDITATIONS/ CERTIFICATIONS/ ASSURANCE SCHEMES ORIGIN

**IFS Food Standard** **Other Accreditation**

**Product Country of Origin/Place of** Netherlands (the)

**Provenance**

**Additional Origin Details**

n/a

PRODUCT CHARACTERISTICS

Standards Testing

<b>Do you undertake trend analysis of microbiological results?</b>	No	<b>Is shelf life testing undertaken?</b>	No
--	----	--	----

CONFIGURATION	Case Configuration		Inner Pack Configuration				
	<b>Total Quantity of Inner Components in Outer Case</b>	100 Units					
	<b>Is the Outer Case Splittable?</b>	No					
PRODUCT WEIGHTS	Inner Component						
	<b>Variable Weight Consumer Item</b>	No					
	<b>Inner Component Weight</b>	80 g					
	Outer Case						
	<b>Outer Case Gross Weight</b>	8.38 kg					
PRODUCT DIMENSIONS	<b>Outer Case Net Weight</b>	8 kg					
	Inner Component						
	<b>Inner Component Depth</b>	0 mm					
	<b>Inner Component Width</b>	0 mm					
	<b>Inner Component Height</b>	0 mm					
	Outer Case						
	<b>Outer Case Depth</b>	398 mm					
PALLET INFORMATION	<b>Outer Case Width</b>	294 mm					
	<b>Outer Case Height</b>	178 mm					
	<b>Quantity of Cases Per Pallet Layer</b>	10 Cases	<b>Pallet Height</b>	1.93 MTR			
	<b>Quantity of Layers Per Pallet</b>	10 Layers					
PACKAGING	<b>Quantity of Cases Per Pallet</b>	100 Cases					
	Outer Case Packaging						
	<b>Type</b>	<b>Materials</b>	<b>Weight</b>	<b>Recycled Plastic %</b>	<b>Recyclable</b>	<b>Returnable</b>	<b>Composite</b>
	Case	Plastic	17 g	- %			
	Case	Paper/Cardboard	302 g	- %			
OTHER INFORMATION	Case	Other	3 g	- %			
	<b>Intrastat/Taric Code</b>	19012000					
CONTACT INFORMATION	<b>Manufacturer Comments</b>						
	n/a						
CONTACT INFORMATION	Address						
	Europastry						
	Plaza Xavier Cugat 2, Edificio Planta 4,						
	Parc Sant Cugat Nord, 08174 Sant Cugat del Vallès						
	Barcelona Spain						

Commercial Contact  
Ash Hirani  
UK & Ireland Sales Manager  
ahirani@europastry.com

P: (Phone) 07757701544

The information on the [Erudus System](#) has been supplied by the manufacturers of the products and, whilst the owners of the Erudus System take steps to ensure the information is regularly updated, they give no warranty and no guarantee that the information is accurate. Product information and ingredients may change, please always read product labels carefully in addition to using the information provided by Erudus.

We do not accept liability for any inaccuracies or incorrect information contained on this site.  
Please visit <http://www.erudus.com/terms-and-conditions> for full terms and conditions.