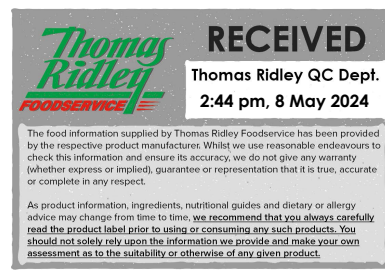


Changed May 08, 2024 11:00  
Reviewed May 08, 2024 11:00  
Erudus ID 5f29481b326f4b628bad42105eff12b8  
Version 2.0



05932

# Meadowland Wrapper 40x250g

72% Vegetable Fat Spread 40x250g

## PRODUCT DESCRIPTION

72% Vegetable Fat Spread.

Brand	Meadowland
Manufacturer Product Code	67879728
Product Type	Food
Product Category	Vegan Butter and Margarine
Storage Type	Chilled
Erudus ID	5f29481b326f4b628bad42105eff12b8
Specification Type	Alternatives (Vegetarian and Vegan)



Inner Component GTIN	8719200069114
Outer Case GTIN	8719200069145



## INGREDIENTS

### Ingredient Declaration

Vegetable oil (rapeseed, palm), water, BUTTERMILK (10%), emulsifiers (sunflower lecithin, mono- and diglycerides of fatty acids), salt, natural flavouring (contains MILK), citric acid, vitamins (A, D), colour (carotenes).

## ALLERGENS

Product Contains:

<b>Celery/Celeriac</b>	No
<b>Cereals Containing Gluten</b>	No
<b>Barley</b>	No
<b>Oats</b>	No
<b>Rye</b>	No
<b>Wheat (including Spelt and Khorasan)</b>	No
<b>Crustacea</b>	No
<b>Eggs</b>	No
<b>Fish</b>	No
<b>Lupin</b>	No
<b>Milk</b>	Yes
<b>Molluscs</b>	No
<b>Mustard</b>	No
<b>Nuts (Tree)</b>	No
<b>Almond nuts</b>	No
<b>Brazil nuts</b>	No
<b>Cashew nuts</b>	No
<b>Hazelnuts</b>	No
<b>Macadamia (Queensland) nuts</b>	No
<b>Pecan nuts</b>	No
<b>Pistachio nuts</b>	No
<b>Walnuts</b>	No
<b>Peanuts</b>	No
<b>Sesame Seeds</b>	No
<b>Soybeans</b>	No
<b>Sulphur Dioxide and Sulphites</b>	No

#### Additional Allergen Information

MILK

#### SUPPLEMENTARY INGREDIENT INFORMATION

<b>Palm Oil</b>	Yes
<b>Hydrogenated Vegetable Oil/Fat</b>	No
<b>GM Protein/DNA</b>	No
<b>Alcoholic Strength %Vol (ABV)</b>	0 % Vol
<b>CBD Concentration per Unit</b>	0 mg

#### ADDITIVES

Product Contains:

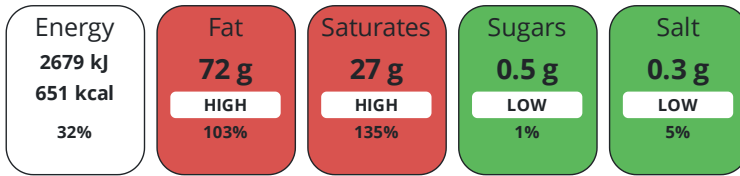
<b>Artificial Antioxidants</b>	No
<b>Artificial Colours</b>	No
<b>Artificial Flavour Enhancers</b>	No
<b>Artificial Flavourings</b>	No
<b>Artificial Preservatives</b>	No
<b>Artificial Sweeteners</b>	No

#### DIET SUITABILITY

<b>Vegan Diet</b>	No	<b>Vegetarian Diet</b>	Suitable for
<b>Halal Diet</b>	Suitable for	<b>Kosher Diet</b>	Suitable for

#### NUTRITIONAL INFORMATION

Each 100g/ml portion contains:



of your reference intake.

Typical values per 100g/ml : Energy 651kcal / 2679kJ

Nutrient	per 100g	RI per 100g
Energy (kJ)	2679 kJ	32%
Energy (kcal)	651 kcal	33%
Fat	72 g	103%
of which Saturates	27 g	135%
Carbohydrate	0.5 g	0%
of which Sugars	0.5 g	1%
Fibre	< 0.5 g	
Protein	< 0.5 g	1%
Salt	0.3 g	5%
Sodium	120 mg	

Source of Nutritional Information Calculation from known/accepted datasets

#### VITAMINS AND MINERALS

Nutrient	per 100g	RI per 100g
Vitamin A	800 µg	100%
Vitamin D	7.5 µg	150%

#### SUPPLEMENTARY NUTRITIONAL INFORMATION

HFSS (HIGH IN FAT, SALT AND SUGAR)

HFSS Status Not Applicable (out of scope, exempt)

#### HANDLING & STORAGE INFORMATION

##### Directions For Use

Ready to use. Suitable for cooking, spreading, baking and frying.

##### Storage Instructions

Keep refrigerated. Store in refrigerator between 0 to 8 C

##### Storage Instructions After Opening

Keep refrigerated. Store in refrigerator between 0 to 8 C

##### Shelf Life from Time of Production

112 Days

##### Exempt From Shelf Life Labelling

No

#### ACCREDITATIONS/ CERTIFICATIONS/ ASSURANCE SCHEMES

##### IFS Food Standard

##### Roundtable of Sustainable Palm Oil (RSPO)

##### Sedex

#### ORIGIN

##### Product Country of Origin/Place of

Poland

##### Provenance

##### Additional Origin Details

Katowice

PRODUCT CHARACTERISTICS  
Standards Testing

**Is shelf life testing undertaken?** Yes

CONFIGURATION  
Case Configuration

**Total Quantity of Inner Components in Outer Case** 40 Units

**Is the Outer Case Splittable?** No

Inner Pack Configuration

PRODUCT WEIGHTS  
Inner Component

**Variable Weight Consumer Item** No

**Inner Component Weight** 250 g

**e mark** Yes

Outer Case

**Outer Case Gross Weight** 10.4 kg

**Outer Case Net Weight** 10 kg

PRODUCT DIMENSIONS  
Inner Component

**Inner Component Depth** 35 mm

**Inner Component Width** 100 mm

**Inner Component Height** 75 mm

Outer Case

**Outer Case Depth** 307 mm

**Outer Case Width** 203 mm

**Outer Case Height** 160 mm

PALLET INFORMATION

**Quantity of Cases Per Pallet Layer** 13 Cases

**Quantity of Layers Per Pallet** 6 Layers

**Quantity of Cases Per Pallet** 78 Cases

**Pallet Height** 1.12 MTR

**Pallet Gross Weight** 840.76 kg

PACKAGING

Inner Component Packaging

Type	Materials	Weight	Recycled Plastic %	Recyclable	Returnable	Composite
Paper Foil	Paper/Cardboard / Paper	4 g	- %	Yes	No	No

Outer Case Packaging

Type	Materials	Weight	Recycled Plastic %	Recyclable	Returnable	Composite
Case	Paper/Cardboard / Cardboard	390 g	- %	Yes	No	No

Transport Packaging

Type	Materials	Weight	Recycled Plastic %	Recyclable	Returnable	Composite
Pallet	Wood	28000 g	- %	No		

OTHER INFORMATION

## CONTACT INFORMATION

### Address

Upfield Foods UK  
Upfield UK Services Limited  
14-21 Rushworth Street  
London  
London  
SE1 0RB  
United Kingdom

P: (Phone) TBC

### Technical Contact

Alessandra Gangemi  
Technical Specialist  
alessandra.gangemi@upfield.com

### Complaints Contact

Paula Castro  
Technical Manager  
paula.dejesuscastro@upfield.com

P: (Phone) 07557549204

The information on the [Erudus System](#) has been supplied by the manufacturers of the products and, whilst the owners of the Erudus System take steps to ensure the information is regularly updated, they give no warranty and no guarantee that the information is accurate. Product information and ingredients may change, please always read product labels carefully in addition to using the information provided by Erudus.

We do not accept liability for any inaccuracies or incorrect information contained on this site.  
Please visit <http://www.erudus.com/terms-and-conditions> for full terms and conditions.