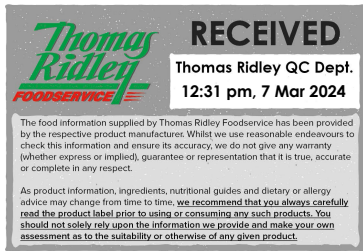


Changed Mar 06, 2024 14:46

Reviewed Mar 06, 2024 14:46

Erudus ID ce41ff5b9f944e3d8d5ffb417c49973b

Version 2.0



06117

# Red Kidney Beans in Water 6x2.5kg

Red Kidney Beans In Water 6x2.5kg

## PRODUCT DESCRIPTION

Red Kidney Beans in Water

Brand	Martin Mathew & Co Ltd
Manufacturer Product Code	A47314
Product Type	Food
Product Category	Beans & Pulses
Storage Type	Ambient
Erudus ID	ce41ff5b9f944e3d8d5ffb417c49973b
Specification Type	Generic
Inner Component GTIN	5017482001161
Outer Case GTIN	05017482101373



## INGREDIENTS

### Ingredient Declaration

Red Kidney Beans, water, calcium chloride.

## ALLERGENS

Product Contains:

<b>Celery/Celeriac</b>	No	<b>Mustard</b>	No
<b>Cereals Containing Gluten</b>	No	<b>Nuts (Tree)</b>	No
<b>Barley</b>	No	<b>Almond nuts</b>	No
<b>Oats</b>	No	<b>Brazil nuts</b>	No
<b>Rye</b>	No	<b>Cashew nuts</b>	No
<b>Wheat (including Spelt and Khorasan)</b>	No	<b>Hazelnuts</b>	No
<b>Crustacea</b>	No	<b>Macadamia (Queensland) nuts</b>	No
<b>Eggs</b>	No	<b>Pecan nuts</b>	No
<b>Fish</b>	No	<b>Pistachio nuts</b>	No
<b>Lupin</b>	No	<b>Walnuts</b>	No
<b>Milk</b>	No	<b>Peanuts</b>	No
<b>Molluscs</b>	No	<b>Sesame Seeds</b>	No
		<b>Soybeans</b>	No
		<b>Sulphur Dioxide and Sulphites</b>	No

### Additional Allergen Information

No allergens present.

## SUPPLEMENTARY INGREDIENT INFORMATION

<b>Palm Oil</b>	No
<b>Hydrogenated Vegetable Oil/Fat</b>	No
<b>GM Protein/DNA</b>	No

ADDITIVES

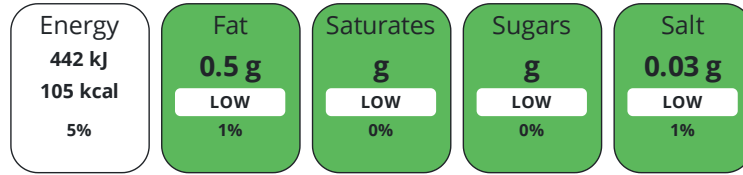
Product Contains:

<b>Artificial Antioxidants</b>	No	<b>Artificial Flavourings</b>	No
<b>Artificial Colours</b>	No	<b>Artificial Preservatives</b>	No
<b>Artificial Flavour Enhancers</b>	No	<b>Artificial Sweeteners</b>	No
<b>Vegan Diet</b>	Suitable for	<b>Vegetarian Diet</b>	Suitable for
<b>Halal Diet</b>	Suitable for	<b>Kosher Diet</b>	Suitable for

DIET  
SUITABILITY

NUTRITIONAL  
INFORMATION

Each 100g/ml portion contains:



of your reference intake.

Typical values per 100g/ml : Energy 105kcal / 442kJ

Nutrient	per 100g	RI per 100g	per 60g serving	RI per 60g serving
<b>Energy (kJ)</b>	442 kJ	5%	265.2 kJ	3%
<b>Energy (kcal)</b>	105 kcal	5%	63 kcal	3%
<b>Fat</b>	0.5 g	1%	0.3 g	0%
<b>of which Saturates</b>	0 g	0%	-	
<b>Carbohydrate</b>	13.6 g	5%	8.2 g	3%
<b>of which Sugars</b>	0 g	0%	-	
<b>Fibre</b>	8.3 g		5 g	
<b>Protein</b>	7.4 g	15%	4.4 g	9%
<b>Salt</b>	0.03 g	1%	-	

**Serving Size** 60 g

**Source of Nutritional Information** Manufacturers analysis

SUPPLEMENTARY  
NUTRITIONAL  
INFORMATION

HFSS (HIGH IN  
FAT, SALT AND  
SUGAR)

**HFSS Status** No

HANDLING &  
STORAGE  
INFORMATION

**Directions For Use**

Can be eaten as sold for salad or in recipe dishes.

**Storage Instructions**

Store in a cool dry place.

**Shelf Life from Time of Production** 730 Days

**Exempt From Shelf Life Labelling** No

ACCREDITATIONS/  
CERTIFICATIONS/  
ASSURANCE  
SCHEMES



ORIGIN

**Product Country of Origin/Place of** Italy

**Provenance**

PRODUCT  
CHARACTERISTICS

Standards Testing

<b>Do you undertake trend analysis of microbiological results?</b>	No	<b>Is shelf life testing undertaken?</b>	No
--	----	--	----

Physical Standards

Test	Description	Frequency	Target	Range	Sample (g or ml)
Defects Gross diameter > 12mm pieces per (500g) (pieces per)	Calibre	Every Batch	<5	5 to 10	100

CONFIGURATION

Case Configuration Inner Pack Configuration

**Total Quantity of Inner Components in Outer Case** 6 Units

**Is the Outer Case Splittable?** Yes

PRODUCT WEIGHTS

Inner Component  
**Variable Weight Consumer Item** No  
**Inner Component Weight** 2.5 kg  
**Net Drained Weight** 1.8 kg

Outer Case  
**Outer Case Gross Weight** 16.2 kg  
**Outer Case Net Weight** 15 kg

PRODUCT DIMENSIONS

Inner Component  
**Inner Component Depth** 150 mm  
**Inner Component Width** 150 mm  
**Inner Component Height** 150 mm

Outer Case  
**Outer Case Depth** 500 mm  
**Outer Case Width** 310 mm  
**Outer Case Height** 155 mm

PALLET INFORMATION

<b>Quantity of Cases Per Pallet Layer</b>	7 Cases	<b>Pallet Height</b>	1.9 MTR
<b>Quantity of Layers Per Pallet</b>	9 Layers	<b>Pallet Gross Weight</b>	1008 kg
<b>Quantity of Cases Per Pallet</b>	63 Cases		

PACKAGING

Inner Component Packaging						
Type	Materials	Weight	Recycled Plastic %	Recyclable	Returnable	Composite
Can	Paper/Cardboard	9 g	- %			
Can	Steel	180 g	- %			
Outer Case Packaging						
Type	Materials	Weight	Recycled Plastic %	Recyclable	Returnable	Composite
Case	Paper/Cardboard	54 g	- %			
Case	Steel	1080 g	- %			

OTHER INFORMATION

**Manufacturer Comments**

On receipt of this spec for use with our products, please sign and return by e mail or hard copy. Once utilised, if no confirmation is received within 4 weeks it will be assumed the specification is acknowledged and accepted. Any formulation changes or allergen updates on our products will be displayed on pack.

CONTACT  
INFORMATION

Address

Martin Mathew & Co Ltd  
50a St Andrew Street  
Hertford  
Herts  
SG14 1JA  
United Kingdom

P: (Phone) 01992641641

The information on the [Erudus System](#) has been supplied by the manufacturers of the products and, whilst the owners of the Erudus System take steps to ensure the information is regularly updated, they give no warranty and no guarantee that the information is accurate. Product information and ingredients may change, please always read product labels carefully in addition to using the information provided by Erudus.

We do not accept liability for any inaccuracies or incorrect information contained on this site.  
Please visit <http://www.erudus.com/terms-and-conditions> for full terms and conditions.