

Changed Feb 20, 2024 14:12

Reviewed Feb 20, 2024 14:12

Erudus ID 248647824d0841bb934b55b1a1992954

Version 2.0

06146

Americana Soft Deli Roll

Deli Roll

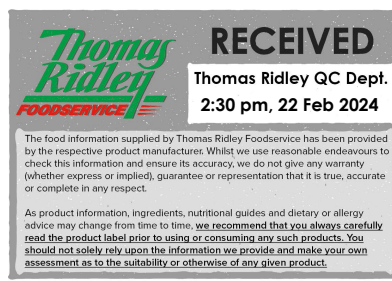
PRODUCT DESCRIPTION

A fully baked, hinge sliced soft white roll, approximately 190mm in length, topped with semolina dusting. The rolls are supplied frozen.

Brand	Lantmannen Unibake
Manufacturer Product Code	4004
Product Type	Food
Product Category	Bread Buns & Rolls
Storage Type	Frozen
Erudus ID	248647824d0841bb934b55b1a1992954
Specification Type	Bakery Products

Inner Component GTIN 5037173100430

Outer Case GTIN 5037173101239



INGREDIENTS

Ingredient Declaration

WHEAT Flour (with Calcium, Iron, Niacin, Thiamin), Water, WHEAT Semolina, Sugar, Vegetable Oils (Palm and Rapeseed), Yeast, Salt, Preservative (E282), Flour Treatment Agent (E300).

ALLERGENS

Product Contains:

Celery/Celeriac	No	Mustard	No
Cereals Containing Gluten	Yes	Nuts (Tree)	No
Barley	No	Almond nuts	No
Oats	No	Brazil nuts	No
Rye	No	Cashew nuts	No
Wheat (including Spelt and Khorasan)	Yes	Hazelnuts	No
Crustacea	No	Macadamia (Queensland) nuts	No
Eggs	May Contain	Pecan nuts	No
Fish	No	Pistachio nuts	No
Lupin	No	Walnuts	No
Milk	May Contain	Peanuts	No
Molluscs	No	Sesame Seeds	May Contain
		Soybeans	No
		Sulphur Dioxide and Sulphites	No

Risk Source:

Additional Allergen Information

For allergens, including cereals containing gluten, see ingredients in CAPITALS. May also contain sesame seeds.

SUPPLEMENTARY
INGREDIENT
INFORMATION

Palm Oil	Yes
Hydrogenated Vegetable Oil/Fat	No
GM Protein/DNA	No

ADDITIVES

Product Contains:

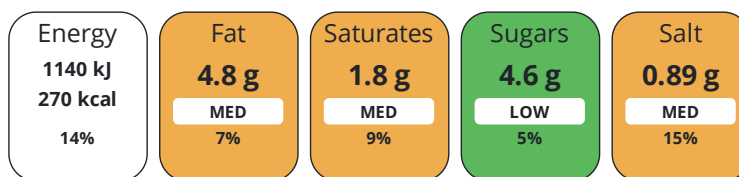
Artificial Antioxidants	No	Artificial Flavourings	No
Artificial Colours	No	Artificial Preservatives	Yes
Artificial Flavour Enhancers	No	Artificial Sweeteners	No

DIET
SUITABILITY

Vegan Diet	Suitable for	Vegetarian Diet	Suitable for
Halal Diet	Suitable for	Kosher Diet	No

NUTRITIONAL
INFORMATION

Each 100g/ml portion contains:



of your reference intake.

Typical values per 100g/ml : Energy 270kcal / 1140kJ

Nutrient	per 100g	RI per 100g	per 95g serving	RI per 95g serving
Energy (kJ)	1140 kJ	14%	1083 kJ	13%
Energy (kcal)	270 kcal	14%	256.5 kcal	13%
Fat	4.8 g	7%	4.6 g	7%
of which Saturates	1.8 g	9%	1.7 g	9%
Carbohydrate	47 g	18%	44.7 g	17%
of which Sugars	4.6 g	5%	4.4 g	5%
Fibre	2.3 g		2.2 g	
Protein	8.5 g	17%	8.1 g	16%
Salt	0.89 g	15%	0.8 g	13%
Sodium	356 mg		338.2 mg	

Serving Size	95 g
---------------------	------

SUPPLEMENTARY
NUTRITIONAL
INFORMATION

Fat Percentage in Dry Matter per 100 g/ml	0 %
--	-----

HANDLING &
STORAGE
INFORMATION

Directions For Use

To defrost: Remove the packs from the box and lie flat. Defrost for approx. 1 hour at room temperature before use.

Storage Instructions

Can be stored until best before date or stored at -18C or below. Once thawed, store in a cool dry place in a sealed bag and use within 4 days. Do not store defrosted products at chilled temperatures as this will accelerate staling. DO NOT REFREEZE ONCE DEFROSTED.

Shelf Life from Time of Production	365 Days	Exempt From Shelf Life Labelling	No
---	----------	---	----

	Other Accreditation					
ORIGIN	Halal					
	Product Country of Origin/Place of	United Kingdom				
	Provenance					
	Additional Origin Details					
	n/a					
PRODUCT CHARACTERISTICS	Standards Testing					
	Do you undertake trend analysis of microbiological results?	Yes	Is shelf life testing undertaken?		Yes	
	Microbiological Standards					
	Organism	Description	Frequency	Target	Maximum	Sample (g or ml)
	Enterobacteriaceae (cfu/g or ml)		Annually	<10	100	95
	Staphylococcus Aureus (cfu/g or ml)		Annually	<50	50	95
	Yeast (cfu/g or ml)		Annually	<100	1000	95
	Moulds (cfu/g or ml)		Every 6 months	<100	1000	95
	Physical Standards					
	Test	Description	Frequency	Target	Range	Sample (g or ml)
	Dimensions Height (mm)		Every Batch	=46	43 to 49	95
	Weight (g)		Every Batch	=95	90 to 100	95
CONFIGURATION	Case Configuration		Inner Pack Configuration			
	Total Quantity of Inner Components in Outer Case	8 Units				
	Is the Outer Case Splittable?	No				
PRODUCT WEIGHTS	Inner Component					
	Variable Weight Consumer Item	Yes				
	Outer Case					
	Outer Case Gross Weight	4.94 kg				
	Outer Case Net Weight	4.57 kg				
PRODUCT DIMENSIONS	Inner Component					
	Inner Component Depth	370 mm				
	Inner Component Width	260 mm				
	Inner Component Height	0 mm				
	Outer Case					
	Outer Case Depth	403 mm				
	Outer Case Width	393 mm				
	Outer Case Height	176 mm				
PALLET INFORMATION	Quantity of Cases Per Pallet Layer	6 Cases	Pallet Height		1.43 MTR	
	Quantity of Layers Per Pallet	7 Layers	Pallet Gross Weight		232.8 kg	
	Quantity of Cases Per Pallet	42 Cases				

PACKAGING

Inner Component Packaging

Type	Materials	Weight	Recycled Plastic %	Recyclable	Returnable	Composite
Bag	Plastic	44 g	- %			

Outer Case Packaging

Type	Materials	Weight	Recycled Plastic %	Recyclable	Returnable	Composite
Tape	Plastic	2 g	- %			
Case	Paper/Cardboard	335 g	- %			

Transport Packaging

Type	Materials	Weight	Recycled Plastic %	Recyclable	Returnable	Composite
Pallet Wrap	Plastic	280 g	- %			
Label	Paper/Cardboard	2 g	- %			
Pallet	Wood	25000 g	- %			

OTHER INFORMATION

Manufacturer Comments

BRC certificate re-issued annually following audit

CONTACT INFORMATION

Address

Lantmannen Unibake
Maidstone Road
Kingston
Milton Keynes
MK10 0BD
England

Technical Contact

Inesa Jegoroviene
Senior Specifications Technologist
inesa.jegoroviene@lantmannen.com

P: (Phone) 07885418956

P: (Phone) 07780837112

Complaints Contact

Ursula Jaillet
Technical Coordinator
ursula.jaillet@lantmannen.com

The information on the [Erudus System](#) has been supplied by the manufacturers of the products and, whilst the owners of the Erudus System take steps to ensure the information is regularly updated, they give no warranty and no guarantee that the information is accurate. Product information and ingredients may change, please always read product labels carefully in addition to using the information provided by Erudus.

We do not accept liability for any inaccuracies or incorrect information contained on this site.
Please visit <http://www.erudus.com/terms-and-conditions> for full terms and conditions.