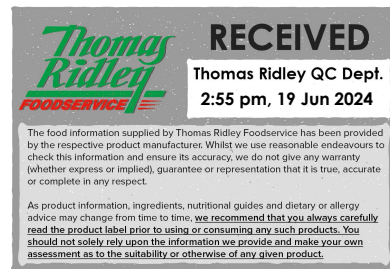


Changed Jun 18, 2024 08:30

Reviewed Jun 18, 2024 08:30

Erudus ID 0c364d8c147a4f3796b427ed91778847

Version 2.0



06220

Tilda Frozen Pilau Basmati Rice 48 x 167g

Tilda Steamed Pilau Basmati Rice

PRODUCT DESCRIPTION

Tilda Frozen Pilau Basmati Rice cooked and blended with Pilau flavourings and then packed in individual portions of 167g and packed 48 in an outer.

Brand	Tilda Ltd
Manufacturer Product Code	FBP167
Manufacturer Version	16
Number	
Product Type	Food
Product Category	Pasta, Rice and Noodles
Storage Type	Frozen
Erudus ID	0c364d8c147a4f3796b427ed91778847
Specification Type	Generic

Outer Case GTIN 05011157995625



INGREDIENTS

Ingredient Declaration

Frozen cooked basmati rice (97%), Pilau seasoning (Potato Maltodextrin, Salt, Cumin, Garam Masala (Coriander, Ginger, Cinnamon, MUSTARD, Ginger, Clove, Pepper, Cumin, Nutmeg, Pimento, Fennel, Cardamom, Sunflower Oil, Cassia Bark Oil), Turmeric Extract, Paprika, Brown MUSTARD Seeds, Sugar, Onion, Yeast Extract, CELERY Seed, Garlic, Ground Turmeric, White Pepper, Mace, Nutmeg).

ALLERGENS

Product Contains:

Celery/Celeriac	Yes	Mustard	Yes
Cereals Containing Gluten	No	Nuts (Tree)	No
Barley	No	Almond nuts	No
Oats	No	Brazil nuts	No
Rye	No	Cashew nuts	No
Wheat (including Spelt and Khorasan)	No	Hazelnuts	No
Crustacea	No	Macadamia (Queensland) nuts	No
Eggs	No	Pecan nuts	No
Fish	No	Pistachio nuts	No
Lupin	No	Walnuts	No
Milk	No	Peanuts	No
Molluscs	No	Sesame Seeds	No
		Soybeans	No
		Sulphur Dioxide and Sulphites	No

SUPPLEMENTARY INGREDIENT INFORMATION

Palm Oil	No
Hydrogenated Vegetable Oil/Fat	No
GM Protein/DNA	No

ADDITIVES

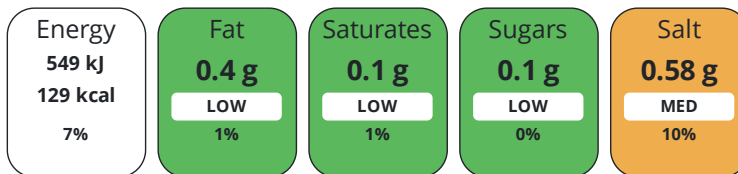
Product Contains:

Artificial Antioxidants	No	Artificial Flavourings	No
Artificial Colours	No	Artificial Preservatives	No
Artificial Flavour Enhancers	No	Artificial Sweeteners	No
Vegan Diet	Suitable for	Vegetarian Diet	Suitable for
Halal Diet	Suitable for	Kosher Diet	Suitable for

DIET SUITABILITY

NUTRITIONAL INFORMATION

Each 100g/ml portion contains:



of your reference intake.

Typical values per 100g/ml : Energy 129kcal / 549kj

Nutrient	per 100g	RI per 100g	per 167g serving	RI per 167g serving
Energy (kJ)	549 kJ	7%	916.8 kJ	11%
Energy (kcal)	129 kcal	6%	215.4 kcal	11%
Fat	0.4 g	1%	0.7 g	1%
of which Saturates	0.1 g	1%	0.2 g	1%
Carbohydrate	28.4 g	11%	47.4 g	18%
of which Sugars	0.1 g	0%	0.2 g	0%
Fibre	0.7 g		1.2 g	
Protein	2.7 g	5%	4.5 g	9%
Salt	0.58 g	10%	1 g	17%
Serving Size	167 g			

SUPPLEMENTARY NUTRITIONAL INFORMATION

HANDLING & STORAGE INFORMATION

Directions For Use

Pan: Place the frozen product in a frying pan with hot oil. Stir over a medium heat for 5 minutes, stirring continuously and then season to taste. Microwave 800W: Place the frozen product in a microwaveable dish, cover and vent. Cook in full power* for 3 minutes. Season to taste. *Adjust accordingly the times for the microwave power and the amount of product used.

Storage Instructions

Keep frozen at -18°C or below. Do not refreeze.

Shelf Life from Time of Production	730 Days
---	----------

ACCREDITATIONS/ CERTIFICATIONS/ ASSURANCE SCHEMES ORIGIN

BRCGS Certified	
------------------------	--

Product Country of Origin/Place of Provenance	United Kingdom
--	----------------

Additional Origin Details

Rice sourced from India

PRODUCT CHARACTERISTICS

Standards Testing

Do you undertake trend analysis of microbiological results?	Yes	Is shelf life testing undertaken?	Yes
--	-----	--	-----

Microbiological Standards

Organism	Description	Frequency	Target	Maximum	Sample (g or ml)
E. Coli (cfu/g or ml)		Every Batch	<10	10	1
Listeria Monocytogenes (cfu/g or ml)		Every Batch	=10	10	1
Bacillus Cereus (cfu/g or ml)		Every Batch	<10	10	1
Coliforms (cfu/g or ml)		Every Batch	<1000	1000	1
Total Viable Count (TVC) (cfu/g or ml)		Every Batch	<100000	100000	1

CONFIGURATION

Case Configuration Inner Pack Configuration

Total Quantity of Inner Components in Outer Case 48 Units

Is the Outer Case Splittable? No

PRODUCT WEIGHTS

Inner Component

Variable Weight Consumer Item Yes

Outer Case

Outer Case Gross Weight 8.27 kg

Outer Case Net Weight 8.02 kg

PRODUCT DIMENSIONS

Inner Component

Inner Component Depth 310 mm

Inner Component Width 140 mm

Inner Component Height 10 mm

Outer Case

Outer Case Depth 395 mm

Outer Case Width 295 mm

Outer Case Height 160 mm

PALLET INFORMATION

Quantity of Cases Per Pallet Layer 10 Cases **Pallet Height** 1.75 MTR

Quantity of Layers Per Pallet 10 Layers **Pallet Gross Weight** 856.96 kg

Quantity of Cases Per Pallet 100 Cases

PACKAGING

Inner Component Packaging

Type	Materials	Weight	Recycled Plastic %	Recyclable	Returnable	Composite
Sachet	Plastic	2.7 g	- %			

Outer Case Packaging

Type	Materials	Weight	Recycled Plastic %	Recyclable	Returnable	Composite
Case	Paper/Cardboard	274 g	- %			

Transport Packaging

Type	Materials	Weight	Recycled Plastic %	Recyclable	Returnable	Composite
Other	Plastic	355 g	- %			

OTHER
INFORMATION

Manufacturer Comments

Individual portions of ready cooked basmati pilau of 167g which are reheated from frozen in microwave.

CONTACT
INFORMATION

Address

Tilda Ltd
Coldharbour Lane
Rainham
Essex
RM13 9YQ
England

P: (Phone) +44 (0)1708 717777

Technical Contact

Michel Saphy
Technical Manager
michel@tilda.com

P: (Phone) 01708 717916

Complaints Contact

Alfred Bruin
Technical Controller
Alfred@tilda.com

P: (Phone) 01708717919

Commercial Contact

Harvir Deol
Regional Account Manager
harvir@tilda.com

P: (Phone) 07767115990

The information on the [Erudus System](#) has been supplied by the manufacturers of the products and, whilst the owners of the Erudus System take steps to ensure the information is regularly updated, they give no warranty and no guarantee that the information is accurate. Product information and ingredients may change, please always read product labels carefully in addition to using the information provided by Erudus.

We do not accept liability for any inaccuracies or incorrect information contained on this site.
Please visit <http://www.erudus.com/terms-and-conditions> for full terms and conditions.