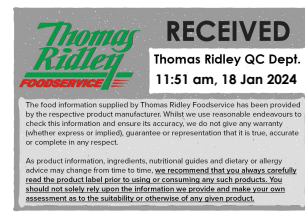


Changed Jan 17, 2024 12:20

Reviewed Jan 17, 2024 12:20

Erudus ID 4d7a2800d18f49f782a9f51eac44a3d5

Version 2.0



Red Tractor Cooked Chicken

Red Tractor Cooked Chicken 500g

PRODUCT DESCRIPTION

Red Tractor certified cooked chicken breast

| | |
|----------------------------------|----------------------------------|
| Brand | Kings Fine Cooked Meats |
| Manufacturer Product Code | CHICBRIT50 |
| Product Type | Food |
| Product Category | Chicken & Turkey |
| Storage Type | Chilled |
| Erudus ID | 4d7a2800d18f49f782a9f51eac44a3d5 |
| Specification Type | Meat |
| Inner Component GTIN | 5060388582548 |
| Inner Pack GTIN | 5060388582548 |
| Outer Case GTIN | 05060388582555 |

INGREDIENTS

Ingredient Declaration

Chicken (100g of Chicken per 100g of finished product), Water, Salt, Pea Starch, Stabilisers (E451, E450), Gelling Agent (Carrageenan E407)

ALLERGENS

Product Contains:

| | | | |
|---|----|--------------------------------------|----|
| Celery/Celeriac | No | Mustard | No |
| Cereals Containing Gluten | No | Nuts (Tree) | No |
| Barley | No | Almond nuts | No |
| Oats | No | Brazil nuts | No |
| Rye | No | Cashew nuts | No |
| Wheat (including Spelt and Khorasan) | No | Hazelnuts | No |
| Crustacea | No | Macadamia (Queensland) nuts | No |
| Eggs | No | Pecan nuts | No |
| Fish | No | Pistachio nuts | No |
| Lupin | No | Walnuts | No |
| Milk | No | Peanuts | No |
| Molluscs | No | Sesame Seeds | No |
| | | Soybeans | No |
| | | Sulphur Dioxide and Sulphites | No |

SUPPLEMENTARY INGREDIENT INFORMATION

| | |
|---------------------------------------|----|
| Palm Oil | No |
| Hydrogenated Vegetable Oil/Fat | No |
| GM Protein/DNA | No |

ADDITIVES

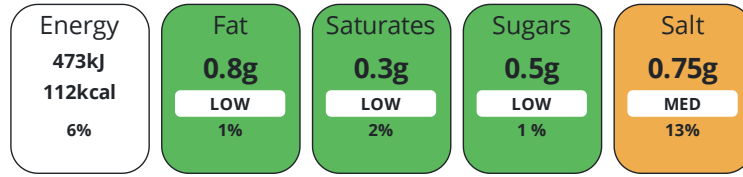
Product Contains:

| | | | |
|-------------------------------------|----|---------------------------------|----|
| Artificial Antioxidants | No | Artificial Flavourings | No |
| Artificial Colours | No | Artificial Preservatives | No |
| Artificial Flavour Enhancers | No | Artificial Sweeteners | No |

DIET SUITABILITY

| | | | |
|-------------------|----|--------------------|----|
| Halal Diet | No | Kosher Diet | No |
|-------------------|----|--------------------|----|

Each 100g/ml portion contains:



of your reference intake.

Typical values per 100g/ml : Energy 112kcal / 473kJ

| Nutrient | per 100g | RI per 100g | per 50g serving | RI per 50g serving |
|--------------------|----------|-------------|-----------------|--------------------|
| Energy (kJ) | 473 kJ | 6% | 236.5 kJ | 3% |
| Energy (kcal) | 112 kcal | 6% | 56 kcal | 3% |
| Fat | 0.8 g | 1% | 0.4 g | 1% |
| of which Saturates | 0.3 g | 2% | 0.2 g | 1% |
| Carbohydrate | < 0.5 g | 0% | 0.3 g | 0% |
| of which Sugars | < 0.5 g | 1% | 0.3 g | 0% |
| Fibre | < 0.5 g | | 0.3 g | |
| Protein | 26.9 g | 54% | 13.5 g | 27% |
| Salt | 0.75 g | 13% | 0.4 g | 7% |

| | |
|--------------------|-------------|
| Serving Size | 50 g |
| Number of Servings | 10 Servings |

Source of Nutritional Information Manufacturers analysis

SUPPLEMENTARY
NUTRITIONAL
INFORMATION

HFSS (HIGH IN
FAT, SALT AND
SUGAR)
HANDLING &
STORAGE
INFORMATION

HFSS Status 2

Directions For Use

Product is ready to eat. For sliced; remove the product from packaging before consuming. For joints; remove the product from packaging and cut to desired size before consuming.

Storage Instructions

Keep refrigerated at 0-5°C. Use within 3 days of opening.

Storage Instructions After Opening

Keep refrigerated at 0-5°C. Use within 3 days of opening.

Shelf Life from Time of Production 21 Days

Exempt From Shelf Life Labelling No

Shelf Life From Opening 3 Days

ACCREDITATIONS/
CERTIFICATIONS/
ASSURANCE
SCHEMES



ORIGIN

Product Country of Origin/Place of United Kingdom

Provenance

Standards Testing

PRODUCT
CHARACTERISTICS

Do you undertake trend analysis of microbiological results? Yes

Is shelf life testing undertaken? Yes

ORGANOLEPTICS

| | |
|-------------------|--|
| Appearance | White/tan colour with no pink areas |
| Aroma | Fresh and savoury |
| Taste | Savoury and creamy with a hint of salt |
| Texture | Tender, easy to chew, internal moisture on chewing |

HAZARD CONTROLS

| | |
|------------------------|-----|
| Metal Detection | Yes |
|------------------------|-----|

CONFIGURATION

| | | | |
|---|----------|----------------------------------|----|
| Case Configuration | | Inner Pack Configuration | |
| Total Quantity of Inner Components in Outer Case | 15 Units | Is Inner Pack Splittable? | No |
| Total Quantity of Inner Packs in Outer Case | 15 Units | | |
| Is the Outer Case Splittable? | Yes | | |

PRODUCT WEIGHTS

| | | | |
|--------------------------------------|---------|--------------------------------|-------|
| Inner Component | | Inner Pack | |
| Variable Weight Consumer Item | Yes | Inner Pack Gross Weight | 524 g |
| Inner Component Weight | 500 g | Inner Pack Net Weight | 500 g |
| Net Drained Weight | 500 g | | |
| e mark | Yes | | |
| Outer Case | | | |
| Outer Case Gross Weight | 7.92 kg | | |
| Outer Case Net Weight | 7.5 kg | | |

PRODUCT DIMENSIONS

| | | | |
|-------------------------------|--------|--------------------------|--------|
| Inner Component | | Inner Pack | |
| Inner Component Depth | 239 mm | Inner Pack Depth | 239 mm |
| Inner Component Width | 166 mm | Inner Pack Width | 166 mm |
| Inner Component Height | 37 mm | Inner Pack Height | 37 mm |
| Outer Case | | | |
| Outer Case Depth | 385 mm | | |
| Outer Case Width | 320 mm | | |
| Outer Case Height | 200 mm | | |

PALLET INFORMATION

| | | | |
|---|----------|----------------------------|----------|
| Quantity of Cases Per Pallet Layer | 9 Cases | Pallet Height | 1.86 MTR |
| Quantity of Layers Per Pallet | 8 Layers | Pallet Gross Weight | 540 kg |
| Quantity of Cases Per Pallet | 72 Cases | | |

PACKAGING

| Inner Pack Packaging | | | | | | | |
|----------------------|-----------------|---------|--------------------|------------|------------|-----------|--|
| Type | Materials | Weight | Recycled Plastic % | Recyclable | Returnable | Composite | |
| Tray | Plastic | 24 g | - % | No | No | | |
| Outer Case Packaging | | | | | | | |
| Type | Materials | Weight | Recycled Plastic % | Recyclable | Returnable | Composite | |
| Case | Paper/Cardboard | 420 g | - % | Yes | No | | |
| Transport Packaging | | | | | | | |
| Type | Materials | Weight | Recycled Plastic % | Recyclable | Returnable | Composite | |
| Pallet | Wood | 25000 g | - % | No | Yes | | |
| Pallet Wrap | Plastic | 325 g | - % | No | No | | |

CONTACT
INFORMATION

Address

Kings Fine Cooked Meats
69 Queens Street
Wigan
Lancashire
WN3 4HW
United Kingdom

P: (Phone) 01942322398

The information on the [Erudus System](#) has been supplied by the manufacturers of the products and, whilst the owners of the Erudus System take steps to ensure the information is regularly updated, they give no warranty and no guarantee that the information is accurate. Product information and ingredients may change, please always read product labels carefully in addition to using the information provided by Erudus.

We do not accept liability for any inaccuracies or incorrect information contained on this site.
Please visit <http://www.erudus.com/terms-and-conditions> for full terms and conditions.