

macphie

OTT® TOFFEE DESSERT TOPPING

PRODUCT CODES: 10008780

DATE: 10/06/22

PRODUCT INFORMATION DOCUMENT

WARRANTY

The intellectual property applied in the development of this product is the sole property of Macphie Ltd. and as such this specification may not be disclosed to a third party without the prior written agreement from the Quality Department of Macphie.

This product conforms to existing UK/EU statutory regulations and codes of practice. Where stated Macphie will try to maintain suppliers and country of origins for the raw materials used in the formulation, however we reserve the right to change suppliers and the source to meet the demands of quality, price and availability in order to maintain continuity of supply to our customers. This specification was correct at the time of publishing.

Product Information Documents are always available from Macphie upon request from quality.standards@macphie.com

Should no feedback be provided to Macphie within 5 working days, customer acceptance of this PID will be assumed.

1. PRODUCT DESCRIPTION

- 1.1 Product Description
Ready-to-use toffee flavour sauce made with a blend of sugar and milk.
- 1.2 Colour/Appearance
Dark toffee brown liquid conforming to previously accepted material
- 1.3 Texture
Smooth Liquid
- 1.4 Flavour
Sweet toffee conforming to previously accepted material

1.5	<u>Product Attributes</u>	<u>Acceptable Levels</u>
	Performance / Organoleptic	Acceptable

2. INGREDIENT LISTING

2.1 The following gives the U.K. Ingredient Declaration for inclusion in customers finished product "Ingredient Listing":-

Ingredient	Source	E No	Country of Origin	Broadband %
Glucose Syrup	Maize, Wheat*			20-40%
Reconstituted Skimmed Milk	Cow's Milk		UK	10-20%
Dextrose	Maize, Wheat*		Bulgaria, Croatia, France, Hungary, Italy, Romania	10-20%
Water	Potable Mains		United Kingdom	10-20%
Humectant				
Glycerol	Rapeseed	E422	UK	<10%
Sugar	Sugar Beet		France	<10%
Vegetable Oil	Rapeseed		Australia, Ukraine, UK	<5%
Modified Starch	Waxy Maize	E1442	France, Netherlands	<2%
Butter (Milk)	Cow's Milk		Ireland, UK	<1%
Colour				<1%
Plain Caramel	Wheat*, Sugar Cane, Sugar Beet	E150a	Denmark, Germany, Austria, Belgium, Bulgaria, Croatia, Cyprus, Czech Republic, Estonia, Finland, France, Greece, Hungary, Ireland, Italy, Latvia, Lithuania, Luxembourg, Malta, Netherlands, Poland, Portugal, Reunion, Slovakia, Slovenia, Spain, Sweden, UK	
Salt	Mineral		UK	<1%
Stabilisers				<1%
Guar Gum		E412	India, Pakistan	
Xanthan Gum	Soya Bean, Maize, Pea Protein	E415	China	
Flavouring		E1520	Netherlands	<1%
Preservative				<1%
Potassium sorbate		E202	China	

For Allergy Advice see ingredients in **bold** in ingredient listing above.

For any products containing palm oil; please see despatch notes/invoices for RSPO palm oil sustainability status.

*In accordance with regulation (EU) No 1169/2011 Annex II; wheat based glucose syrups, including dextrose, are exempt from allergen labelling. Our supplier has confirmed <20mg/kg of gluten in the material. We do not however conduct internal gluten testing of our products.

Uncontrolled
Copy

3. NUTRITION INFORMATION**3.1 TYPICAL VALUES PER 100g OF PRODUCT:-**

Nutrient	Amount	Units
Energy (kJ)	1208	kJ
Energy (kcal)	289	kcal
Fat	4.7	g
of which saturates	0.7	g
Carbohydrates	56	g
of which sugars	39	g
Protein	0.7	g
Salt	0.24	g

Source: Analysis (supplier) /Calculation (McCance & Widdowson)

Uncontrolled
Copy

4. ALLERGEN INFORMATION

Used on site	Used on line		RECIPE CONTAINS:
✓	✓	Cereals containing Gluten (wheat, rye, barley, spelt, oats, kamut or their hybridised strains) and products thereof	No
✓	✓	Wheat and products thereof	No
✓	✓	Rye and products thereof	No
✓	✓	Barley and products thereof	No
		Spelt and products thereof	No
✓	✓	Oats and products thereof	No
		Kamut and products thereof	No
		Crustaceans and products thereof	No
		Molluscs and products thereof	No
✓	✓	Eggs and products thereof	No
		Fish and products thereof	No
		Peanuts and products thereof	No
✓	✓	Soybeans and products thereof	No
✓	✓	Milk and milk products thereof (including lactose)	Yes
		Nuts (Almond, Hazelnut, Walnut, Cashew, Pecan nut, Brazil nut, Pistachio nut, Macadamia nut and Queensland nut) and products thereof	No
✓		Celery and products thereof	No
		Mustard and products thereof	No
		Sesame seeds and products thereof	No
		Lupin and products thereof	No
✓	✓	Sulphur dioxide and sulphites (E220-E228) at concentrations of more than 10 mg/kg or 10 mg/litre expressed as SO ₂	No

Uncontrolled
Copy

4.2 SUPPLEMENTARY DATA

	CONTAINS:
Animal products (other than those listed above) and products thereof	No
Maize and products thereof	Yes
Colours – non natural	No
Colours – natural	Yes
Flavours – non natural	No
Flavours - natural	Yes
GM Materials	No
	SUITABLE FOR:
Vegetarians	Yes
Vegans	No
Coeliac	Yes

Information contained within this document is based exclusively on the product as sold. Full consideration should therefore be given to product make-up/finished product standard.

5. STORAGE CONDITIONS AND SHELF LIFE

5.1 Unopened			
Product Code	Pack Size	Shelf Life	
10008780	6 x 500g Carton	Total (sealed)	9 months from date of manufacture. Clearly marked with "Best Before" date.
Storage conditions- Store in cool, dry hygienic environment (<20°C)			

5.2 Opened	
Shelf Life	4 weeks
Storage conditions	Store in hygienic environment (<20°C)

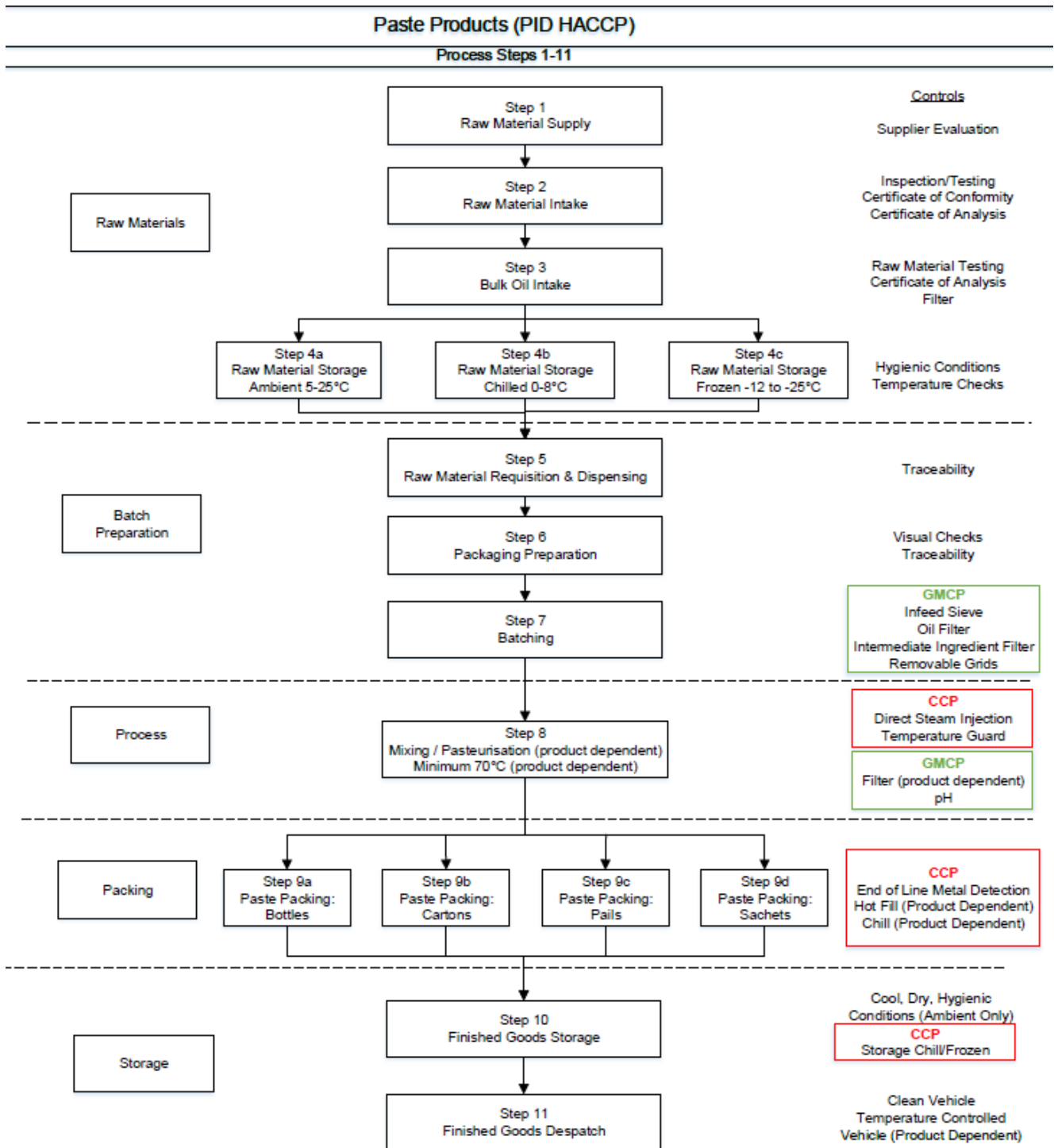
6. FOOD SAFETY DATA

6.1 Microbiological (typical)

Test	Standard
Total Viable Count	< 10,000 cfu/g
Enterobacteriaceae	< 10 cfu/g

Uncontrolled
Copy

7. HACCP FLOW CHART



Uncontrolled
Copy

8. PACKAGING

8.1	Packaging		
	Pack Size:	6 x 500g cartons	
		Specification	Weights (kg)
	Primary Pack	Neutral Bottle, headstand cap with induction seal.	0.041
		Label: polypropylene film	
		Bottle: food grade polypropylene copolymer	
		Cap: food grade polypropylene	
		LLDPE and seal	
	Secondary Pack	Cardboard case	0.085
	Tertiary Pack	Pallet stretchwrap: polythene	0.450
		Pallet layerboard: paper	0.397
		Pallet	30
8.2	Sealing	Heat sealed Foil seal	
8.3	Dimensions of Unit (length x width x height)	170mm x 149mm x 165mm	
8.4	Palletisation (dimensions of pallet)		
	Pallet Configuration	42 cartons/layer x 7 layers = 294 units/pallet	
	Dimensions of Pallet	1200mm x 1000mm	
8.5	Labelling	Each carton is labelled with product name, product code, product weight (minimum weight), best before date (DD/MM/YY), system generated 6 digit lot/batch No, and sequential unit number.	

Uncontrolled
Copy

MSDS

MSDS		
1.	PRODUCT & COMPANY IDENTIFICATION	
1.1	Product name	OTT® TOFFEE DESSERT TOPPING
1.2	Product Codes	10008780
1.3	Description	A dessert topping in convenient squeeze bottles
1.4	Manufacturers Name, Address & tel no.	Macphie Ltd, Glenbervie, Stonehaven, AB39 3YG. Tel: 01569 740641
2.	COMPOSITION/INFORMATION ON INGREDIENTS	
2.1	Contains	See section 2 of main document
3.	HAZARD IDENTIFICATION	
	Contains substances, which may cause contact sensitisation, allergic or irritant response. Prolonged skin contact may cause contact dermatitis and/or minor irritation.	
4.	FIRST AID MEASURES	
4.1	Inhalation	Not applicable.
4.2	Ingestion	Not applicable.
4.3	Skin contact	Wash off with soapy water. If skin irritation develops seek medical advice.
4.4	Eye contact	Rinse immediately with plenty of water. If irritation persists seek medical advice.
5.	FIRE/EXPLOSION HAZARD	
5.1	Suitable fire extinguishing media	Water, Foam, Dry Chemical, Carbon Dioxide
5.2	Protection against fire	Good housekeeping to avoid the accumulation of spillages.
6.	ACCIDENTAL RELEASE MEASURES	
6.1	Methods of cleaning/absorption	Absorb spillages with a suitable material.
6.2	Personal precautions	See section 8. Exposure controls/personal protection
6.3	Environmental precautions	The method of disposal should be in accordance with current local authority regulations.
7.	HANDLING AND STORAGE	
7.1	Handling	Keep the working area free from accumulated spillages.
7.2	Storage	Store in original packaging. Keep cool and dry and ensure product is stored in accordance with Food Safety Act.
8.	EXPOSURE CONTROLS/PERSONAL PROTECTION	
8.1	General Precautions	a) Handle in accordance with good occupational hygiene and safety practices. Avoid contact with skin and eyes. b) Change work practices to minimize spillages. <ul style="list-style-type: none"> Improve care and attention to the prevention of spillages. Avoid damage to packaging to prevent leaks.
8.2	Ventilation	In accordance with LEV requirements as defined in COSHH 2002(as amended) legislation.
8.3	Respiratory Protection	Not required under normal conditions.
8.4	Eye Protection	Safety goggles as required.
8.5	Skin Protection	Standard protective clothing (including gloves) and appropriate skin protection if required.

9.	PHYSICAL & CHEMICAL PROPERTIES	
9.1	Form	Paste
9.2	Colour	Refer to section 1 of main document.
9.3	Odour	Free from off odours, as previous standard
9.4	Flammability	Product is not combustible

10.	STABILITY & REACTIVITY	
	This material is stable under normal conditions of use.	
10.1	Conditions to avoid	None
10.2	Materials to avoid	None
10.3	Hazardous decomposition products	None

11.	TOXICOLOGICAL INFORMATION	
11.1	Inhalation	Not applicable.
11.2	Eye Irritation	Contact with eyes may cause irritation.
11.3	Skin Irritation	Prolonged and/or frequent contact may cause irritation and dermatitis
11.4	Ingestion	Not applicable.

12.	ECOLOGICAL INFORMATION	
	The product should not be allowed to enter any watercourse.	

13.	DISPOSAL CONSIDERATIONS	
	Product not believed to be dangerous to the environment and so no special disposal method is required. However, the method of disposal should be in accordance with current local authority regulations.	

14.	TRANSPORT INFORMATION	
14.1	UN No.	N/A
14.2	Sea	N/A
14.3	Road/Rail	N/A
14.4	Air	N/A

15.	REGULATORY INFORMATION	
	Classification not required.	

16.	OTHER INFORMATION	
	Under the 2002 COSHH regulations (as amended) you are reminded that the user is under legal obligation to carry out a suitable and sufficient assessment as to the risks to health which this material may present under its actual condition of use.	

The information contained throughout the document was correct at the time of publishing.

Uncontrolled
Copy