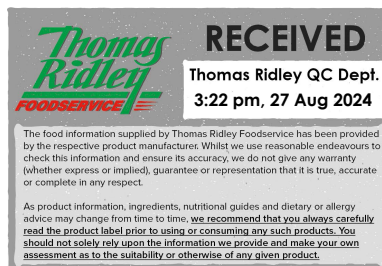


Changed Aug 23, 2024 10:25

Reviewed Aug 23, 2024 10:25

Erudus ID fb1113fcf9a04b31aaa38f196285b5ab

Version 6.0



**Thomas Ridley**  
FOODSERVICE

**RECEIVED**  
Thomas Ridley QC Dept.  
3:22 pm, 27 Aug 2024

The food information supplied by Thomas Ridley Foodservice has been provided by the respective product manufacturer. Whilst we use reasonable endeavours to check this information and ensure its accuracy, we do not give any warranty (whether express or implied), guarantee or representation that it is true, accurate or complete in any respect.

As product information, ingredients, nutritional guides and dietary or allergy advice may change from time to time, we recommend that you always carefully read the product label prior to using or consuming any such products. You should not solely rely upon the information we provide and make your own assessment as to the suitability or otherwise of any given product.



06335

# BRIOCHE BUN, GLAZED, SEEDED AND SLICED (RTA)

Brioche Bun, Glazed, Seeded And Sliced 48x90g

## PRODUCT DESCRIPTION

Frozen, fully baked individual sweet, moulded, glazed bread piece, topped with Linseeds and sliced.

<b>Brand</b>	Speciality Breads Ltd
<b>Manufacturer Product Code</b>	FB661
<b>Product Type</b>	Food
<b>Product Category</b>	Bread Buns & Rolls
<b>Storage Type</b>	Frozen
<b>Erudus ID</b>	fb1113fcf9a04b31aaa38f196285b5ab
<b>Specification Type</b>	Bakery Products



**Outer Case GTIN** 5032633156613



## INGREDIENTS

### Ingredient Declaration

**Wheat** Flour (Fortified with Calcium Carbonate, Niacin, Iron, Thiamin), Water, Concentrated Butter (from **milk**), Sugar, Yeast, Free Range **Egg**, Glaze <2% (skimmed **milk**, water, rapeseed oil, **milk** protein, modified starch E1442 (maize), emulsifier E471 (from palm oil), stabilizer E407, acidity regulator E339, colour E160a), Golden Linseed <1%, Salt, Skimmed **Milk**, Flour Treatment Agent: E 300, Turmeric.

## ALLERGENS

Product Contains:

<b>Celery/Celeriac</b>	No	<b>Mustard</b>	No
<b>Cereals Containing Gluten</b>	Yes	<b>Nuts (Tree)</b>	No
<b>Barley</b>	May Contain	<b>Almond nuts</b>	No
<b>Oats</b>	No	<b>Brazil nuts</b>	No
<b>Rye</b>	May Contain	<b>Cashew nuts</b>	No
<b>Wheat (including Spelt and Khorasan)</b>	Yes	<b>Hazelnuts</b>	No
<b>Crustacea</b>	No	<b>Macadamia (Queensland) nuts</b>	No
<b>Eggs</b>	Yes	<b>Pecan nuts</b>	No
<b>Fish</b>	No	<b>Pistachio nuts</b>	No
<b>Lupin</b>	No	<b>Walnuts</b>	No
<b>Milk</b>	Yes	<b>Peanuts</b>	No
<b>Molluscs</b>	No	<b>Sesame Seeds</b>	No
		<b>Soybeans</b>	No
		<b>Sulphur Dioxide and Sulphites</b>	No

Risk Source:

## SUPPLEMENTARY INGREDIENT INFORMATION

<b>Palm Oil</b>	Yes
<b>Hydrogenated Vegetable Oil/Fat</b>	No
<b>GM Protein/DNA</b>	No

ADDITIVES

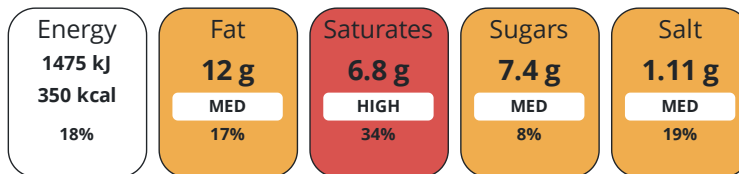
Product Contains:

<b>Artificial Antioxidants</b>	No	<b>Artificial Flavourings</b>	No
<b>Artificial Colours</b>	No	<b>Artificial Preservatives</b>	No
<b>Artificial Flavour Enhancers</b>	No	<b>Artificial Sweeteners</b>	No
<b>Vegan Diet</b>	No	<b>Vegetarian Diet</b>	Suitable for
<b>Halal Diet</b>	No	<b>Kosher Diet</b>	No

DIET  
SUITABILITY

NUTRITIONAL  
INFORMATION

Each 100g/ml portion contains:



of your reference intake.

Typical values per 100g/ml : Energy 350kcal / 1475kJ

Nutrient	per 100g	RI per 100g	per 90g serving	RI per 90g serving
<b>Energy (kJ)</b>	1475 kJ	18%	1327.5 kJ	16%
<b>Energy (kcal)</b>	349.9 kcal	17%	314.9 kcal	16%
<b>Fat</b>	12 g	17%	10.8 g	15%
<b>of which Saturates</b>	6.8 g	34%	6.1 g	31%
<b>of which Mono-unsaturates</b>	3.3 g		3 g	
<b>of which Polyunsaturates</b>	0.4 g		0.4 g	
<b>Carbohydrate</b>	47.1 g	18%	42.4 g	16%
<b>of which Sugars</b>	7.4 g	8%	6.7 g	7%
<b>of which Starch</b>	0 g		-	
<b>Fibre</b>	2.6 g		2.3 g	
<b>Protein</b>	10.3 g	21%	9.3 g	19%
<b>Salt</b>	1.11 g	19%	1 g	17%
<b>Sodium</b>	0.44 mg		0.4 mg	
<b>Serving Size</b>	90 g			

VITAMINS AND  
MINERALS

Nutrient	per 100g	RI per 100g	per 90g serving	RI per 90g serving
<b>Vitamin C</b>	0 mg	0%	-	
<b>Folate/Folic Acid</b>	0 µg	0%	-	
<b>Calcium</b>	3.58 mg	0%	3.2 mg	0%
<b>Iron</b>	0.07 mg	1%	0.1 mg	1%
<b>Zinc</b>	0 mg	0%	-	

SUPPLEMENTARY  
NUTRITIONAL  
INFORMATION

<b>Cholesterol per 100 g/ml (UK/FR)</b>	0 g
<b>Trans Fats per 100 g/ml</b>	0.4 g
<b>HFSS Status</b>	Yes
<b>HFSS Score</b>	13

HFSS (HIGH IN  
FAT, SALT AND  
SUGAR)

HANDLING & STORAGE INFORMATION

**Directions For Use**

Defrost inside food-safe plastic bag at room temperature until completely thawed. Once defrosted do not refreeze.

**Storage Instructions**

FROZEN. STORE AT -18°C

**Shelf Life from Time of Production** 365 Days

ACCREDITATIONS/ CERTIFICATIONS/ ASSURANCE SCHEMES ORIGIN

**BRCGS Certified**

**Red Tractor**

**Roundtable of Sustainable Palm Oil (RSPO)**

**Product Country of Origin/Place of Provenance** United Kingdom

**Additional Origin Details**

n/a

PRODUCT CHARACTERISTICS

Standards Testing

**Do you undertake trend analysis of microbiological results?** Yes

**Is shelf life testing undertaken?** Yes

CONFIGURATION

Case Configuration

Inner Pack Configuration

**Total Quantity of Inner Components in Outer Case** 48 Units

**Is the Outer Case Splittable?** No

PRODUCT WEIGHTS

Inner Component

**Variable Weight Consumer Item** No

**Inner Component Weight** 90 g

**Net Drained Weight** 0 g

Outer Case

**Outer Case Gross Weight** 4.68 kg

**Outer Case Net Weight** 0.36 kg

PRODUCT DIMENSIONS

Inner Component

**Inner Component Depth** 595 mm

**Inner Component Width** 235 mm

**Inner Component Height** 268 mm

Outer Case

**Outer Case Depth** 238 mm

**Outer Case Width** 598 mm

**Outer Case Height** 268 mm

PALLET INFORMATION

**Quantity of Cases Per Pallet Layer** 8 Cases

**Pallet Type** UK Standard Pallet

**Quantity of Layers Per Pallet** 6 Layers

**Pallet Height** 1.85 MTR

**Quantity of Cases Per Pallet** 48 Cases

**Pallet Gross Weight** 256.96 kg

PACKAGING

Inner Component Packaging

Type	Materials	Weight	Recycled Plastic %	Recyclable	Returnable	Composite
Film	Plastic	17 g	- %			

Outer Case Packaging

Type	Materials	Weight	Recycled Plastic %	Recyclable	Returnable	Composite
Case	Paper/Cardboard	389 g	- %			

Transport Packaging

Type	Materials	Weight	Recycled Plastic %	Recyclable	Returnable	Composite
Other	Plastic	525 g	- %		Yes	
Other	Paper/Cardboard	110 g	- %		Yes	

OTHER INFORMATION

**Intrastat/Taric Code** 1905

CONTACT INFORMATION

Address

Speciality Breads Ltd  
 Unit J2 Channel Road  
 Westwood Industrial Estate  
 Margate  
 Kent  
 CT9 4JS  
 England

P: (Phone) 01843 209442

The information on the [Erudus System](#) has been supplied by the manufacturers of the products and, whilst the owners of the Erudus System take steps to ensure the information is regularly updated, they give no warranty and no guarantee that the information is accurate. Product information and ingredients may change, please always read product labels carefully in addition to using the information provided by Erudus.

We do not accept liability for any inaccuracies or incorrect information contained on this site. Please visit <http://www.erudus.com/terms-and-conditions> for full terms and conditions.